

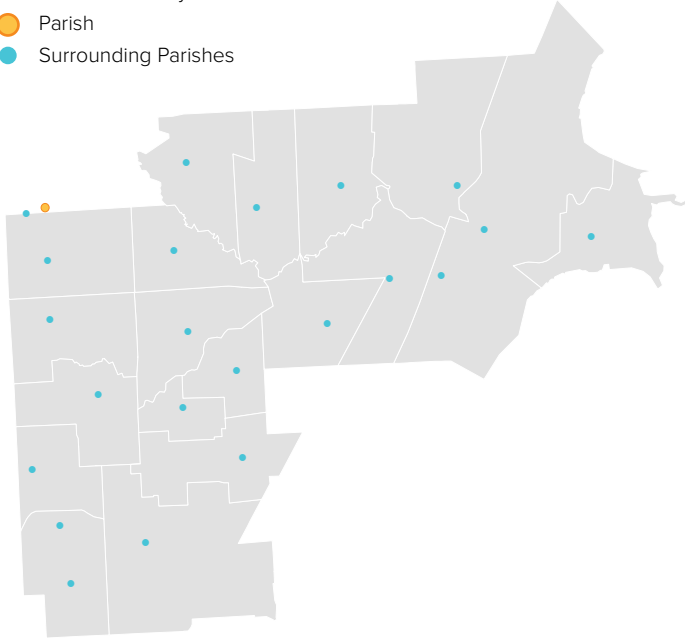
SS. CYRIL AND METHODIUS

STERLING HEIGHTS, MI / CENTRAL MACOMB VICARIATE / NORTHEAST REGION

Parish Profile and Survey Results

KEY

- Parish Boundary
- Parish
- Surrounding Parishes



TOTAL SURVEY RESPONSES

Parish ID	Name	responses
274	SS. Cyril and Methodius	198

PARISH LOCATION AND BOUNDARY - WITHIN VICARIATE

PARISH CATHOLIC POPULATION FACTS

	2000	2013	% Change
Total Registered Households	562	959	70.6%
Total Registered Individuals	1,686	2,685	59.3%
% of HH in Parish Boundary		0%	
% of HH Outside Parish Boundary		100%	

KEY U.S. CENSUS FACTS

	2000	2010	% Change
Total Households	#N/A	#N/A	#N/A
Total Population	#N/A	#N/A	#N/A
Median Household Income	#N/A	#N/A	#N/A
Median Age	#N/A	#N/A	#N/A

PARISH FINANCIAL STATS

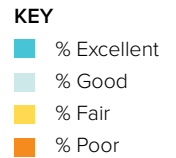
	2009	2013	% Change
Total Operating Income	\$1,046,438	\$1,555,150	48.6%
Total Operating Expenses	\$504,419	\$1,123,156	122.7%
LDP Debt	\$-	\$-	0.0%
AOD & MCC	\$-	\$1,175	0.0%
Outstanding payables			
Total Savings	\$597,537	\$790,331	32.3%

PARISH SACRAMENTAL STATS (5 YR. TREND)

	2009	2013	% Change
Baptisms	83	50	-39.8%
First Communion	53	54	1.9%
Confirmations	51	60	17.6%
Total Marriages	16	9	-43.8%
Funerals	35	31	-11.4%

SS. CYRIL AND METHODIUS

STERLING HEIGHTS, MI / CENTRAL MACOMB VICARIATE / NORTHEAST REGION

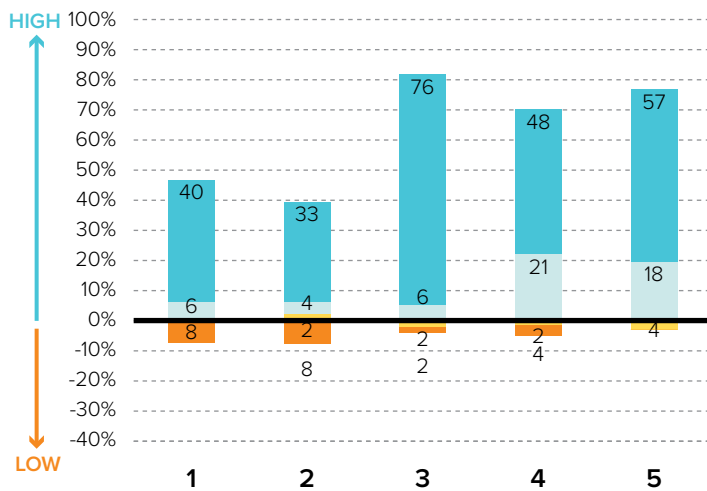


Survey Results Part I: Mission Priorities

The following graphs show how parishioners rated each of the objectives associated with a mission priority area. The graphs are split between positive values for high ratings (“good” or “excellent”) and negative values for lower ratings (“fair” or “poor”). “Don’t know” responses are not shown in the graphs at right to more easily show the split between high and low ratings.

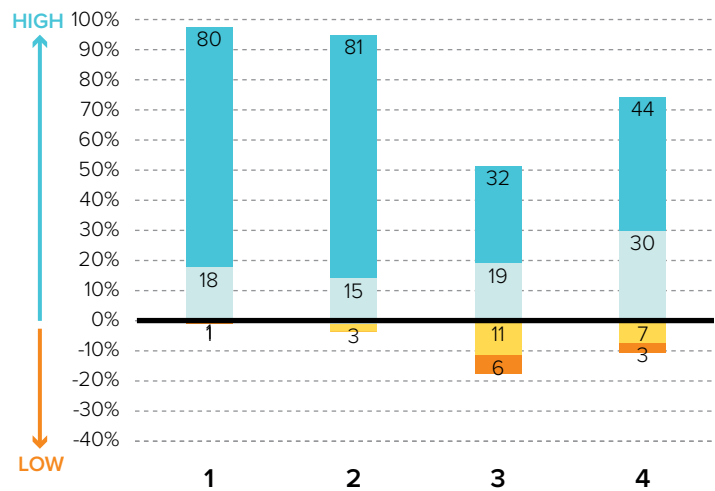
To the best of your ability, please evaluate how well your parish is doing in each of these areas.

PRIORITY AREA: CATHOLIC SCHOOLS



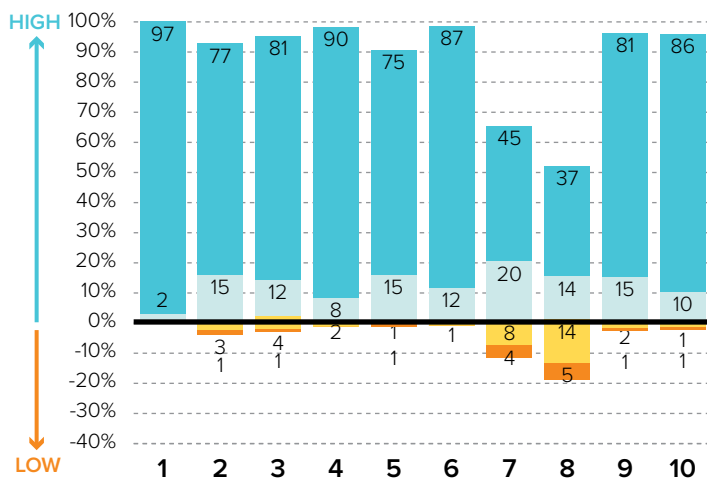
- 1 Ensuring a Catholic education is financially viable
- 2 Keeping tuition affordable to all Catholics
- 3 Maintaining a Catholic identity
- 4 Using technology effectively
- 5 Ensuring academic success and Catholic formation

PRIORITY AREA: CHRISTIAN SERVICE AND OUTREACH



- 1 Christian service projects for the parish community
- 2 Christian service projects for youth and young adults
- 3 Building interfaith relationships
- 4 Collaborating with other community organizations

EVANGELIZATION AND CATECHESIS



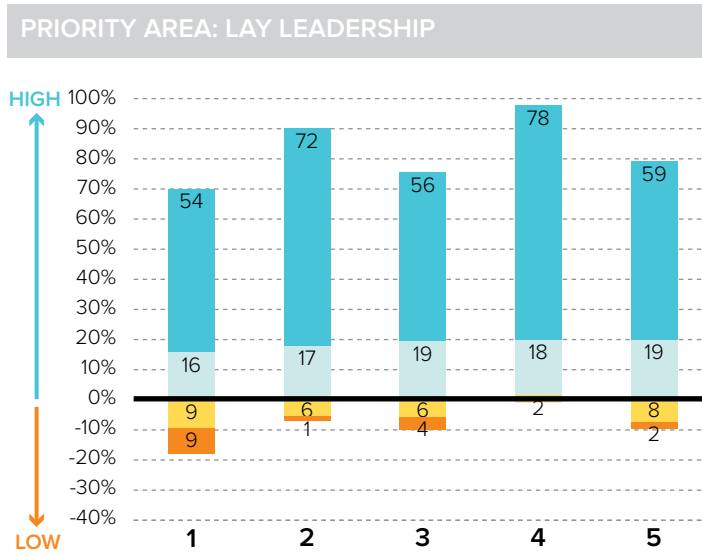
- 1 Explicitly proclaiming the Gospel of Jesus Christ
- 2 Evangelization leadership (committee, minister, etc.)
- 3 Offering ministries to evangelize adults
- 4 Offering ministries for spiritual growth
- 5 Offering programs aimed at parish renewal
- 6 Prayers for healing and spiritual reconciliation
- 7 Reaching out to inactive Catholics
- 8 Reaching out to non-Catholics
- 9 Providing adult faith formation and catechesis
- 10 Strengthening religious education

SS. CYRIL AND METHODIUS

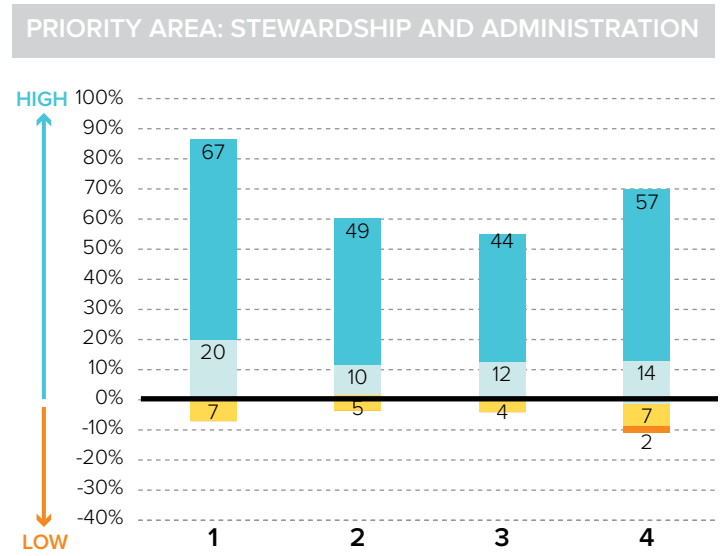
STERLING HEIGHTS, MI / CENTRAL MACOMB VICARIATE / NORTHEAST REGION

KEY
■ % Excellent
■ % Good
■ % Fair
■ % Poor

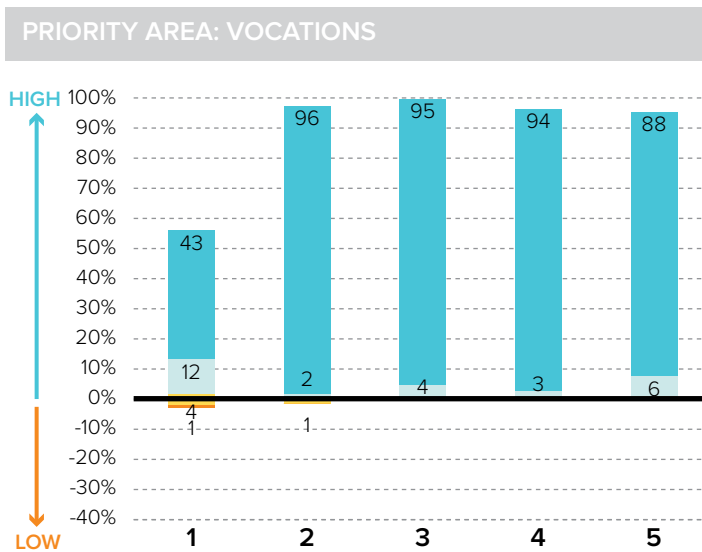
Survey Results Part I: Mission Priorities



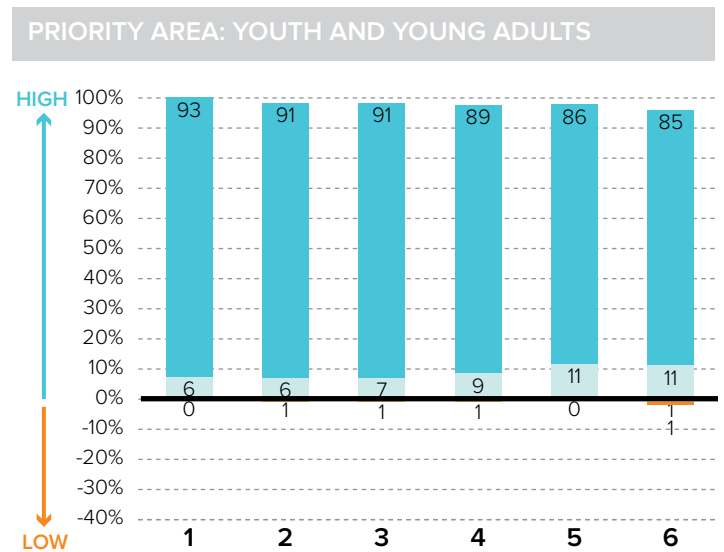
- 1 Training parishioners to identify their spiritual gifts
- 2 Increasing opportunities for lay involvement
- 3 Training and ministry for lay leaders
- 4 Encouraging parishioners to volunteer
- 5 Providing training opportunities for volunteers



- 1 Communicating stewardship as a way of life
- 2 Forming an active Stewardship Commission
- 3 Supporting an active Finance Council
- 4 Financial transparency/accountability



- 1 Forming a vocations committee
- 2 Promoting vocations to priesthood/religious life
- 3 Promoting prayer for vocations
- 4 Inviting young people to consider Church vocations
- 5 Teaching vocation awareness



- 1 Providing regular meetings for teens
- 2 Providing special events for teens (e.g. retreats)
- 3 Engaging youth in parish life and liturgies
- 4 Providing regular meetings for young adults
- 5 Hosting special events for young adults
- 6 Engaging young adults in parish ministries and outreaches

SS. CYRIL AND METHODIUS

STERLING HEIGHTS, MI / CENTRAL MACOMB VICARIATE / NORTHEAST REGION

Survey Results Part II: Faith and Parish Life

YEARS AT CURRENT PARISH

How many years have you attended Mass at your current parish?

	Count	%
Less than 1 year	0	0.0%
1-5 years	8	5.8%
6-10 years	48	35.0%
11-20 years	38	27.7%
21-30 years	34	24.8%
31+ years	9	6.6%
Total	139	100.0%

MASS ATTENDANCE

How often do you attend Mass?



REASONS TO MISS MASS

If you do not attend Mass regularly on Sundays, how much does each of the following explain why? % "somewhat" or "very"

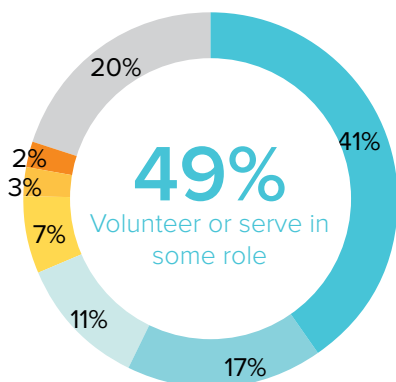
Lack of children's ministries	3.9%
Demands of work, school, or sports	3.8%
Divorce or marriage outside of Church	3.8%
Health problems or a disability	1.9%
The parish is not welcoming	1.9%
Family concerns and needs	1.9%
The pastor is not welcoming	0.0%
Clusters, mergers, and closures of parishes	0.0%
Masses are boring/irrelevant to me	0.0%

REGISTRATION

Are you a registered member at your current parish?



INVOLVEMENT IN THE PARISH



Do you serve, or have you ever served in any of the following roles in your parish?

KEY

- Volunteer (e.g. catechist, Vacation Bible School)
- Liturgical ministries (e.g. usher, Eucharistic Minister, lector)
- Member of a parish council, commission, or committee
- Music ministries (e.g. choir, musician, director)
- Parish support staff (e.g. secretary, maintenance)
- Parish staff (e.g. youth minister, business manager, DRE)
- None of the above

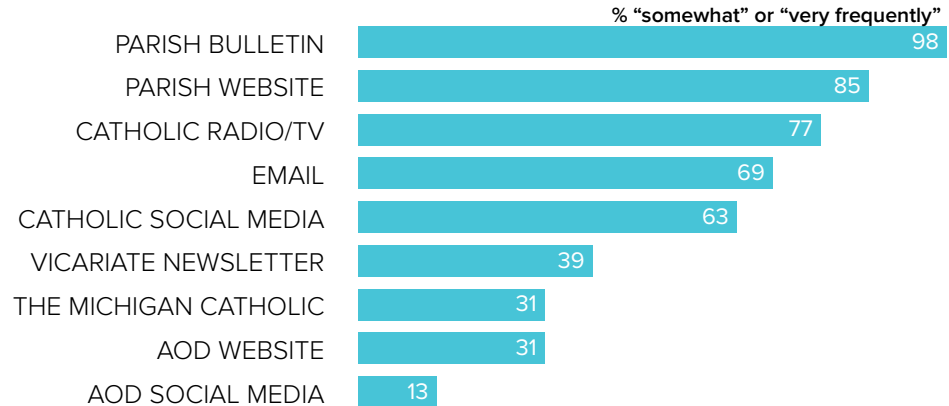
SS. CYRIL AND METHIDIUS

STERLING HEIGHTS, MI / CENTRAL MACOMB VICARIATE / NORTHEAST REGION

Survey Results Part II: Faith and Parish Life

COMMUNICATION METHODS

How often do you rely on the following for information about your parish, the Archdiocese, or the Catholic Church?



PARISH CHARACTERISTICS

How important to you are these characteristics in a parish?

	% "very important"		% "very important"
Parish embraces Church teachings and values	100.0%	Service activities	57.0%
Opportunities for penance/confession	97.1%	Parish social groups/gatherings	50.7%
Daily and weekend Mass schedules	95.6%	Catholic school	35.6%
Quality worship service	91.2%	Mass in language(s) other than English	17.2%
Devotions (rosary, adoration, etc.)	90.5%	Contemporary music	2.2%
Small group ministries (e.g. Bible Study)	62.2%		
Children's ministries (for all age groups)	60.7%		
Traditional music	59.9%		

PASTOR CHARACTERISTICS

How important to you are these characteristics in a pastor?

	% "very important"
Challenges people to live a life of discipleship	94.8%
Ability to connect scripture to the present	92.0%
Invites people into a personal relationship w/ Jesus	90.5%
Welcoming spirit	87.6%
Manages parish resources effectively	77.4%
Engaging preaching style	75.2%
Communicates parish priorities	70.1%
Values input from laity	56.2%

CHALLENGES FACING THE CHURCH

How would you rate the following as challenges facing the Catholic Church in Southeast Michigan today?

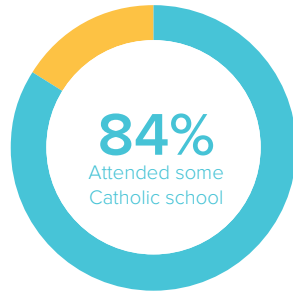
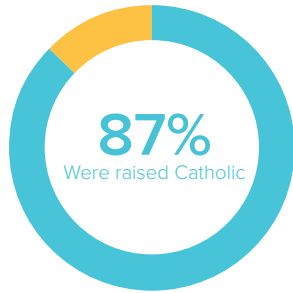
	% "serious challenge"
TOP 5 RESPONSES	
Lack of participation in the sacraments	84.7%
Society in general is less religious	83.8%
Shortage of priests/decline in vocations	72.3%
Engaging teens and young adults in parish life	59.9%
Disconnect between Church teachings and popular culture	51.1%

SS. CYRIL AND METHODIUS

STERLING HEIGHTS, MI / CENTRAL MACOMB VICARIATE / NORTHEAST REGION

Survey Results Part III: Demographics

CATHOLIC BACKGROUND AND EDUCATION



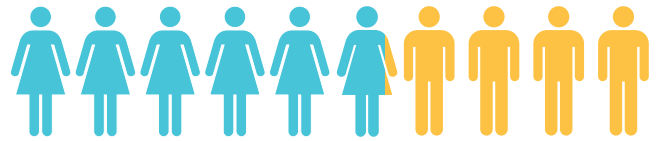
KEY

- Raised Catholic
- Converted to Catholicism
- Not Catholic

KEY

- Attended Catholic school
- Did not attend Catholic school

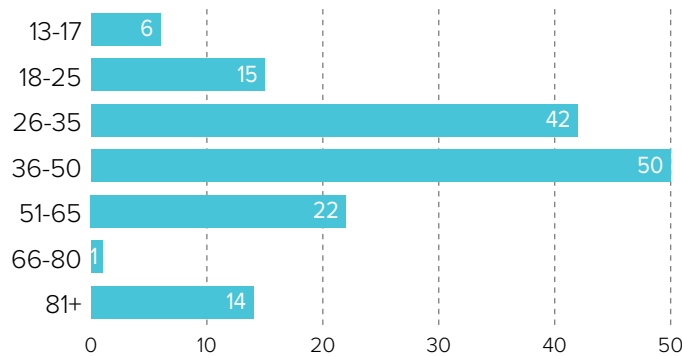
GENDER



59% WOMEN

41% MEN

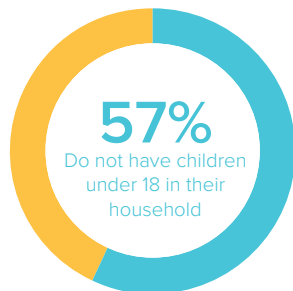
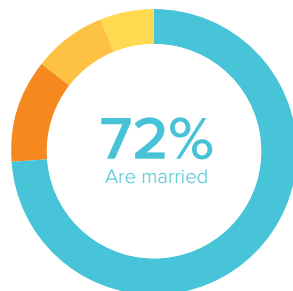
AGE



RACIAL OR ETHNIC BACKGROUND

	Count	%
White	127	93.4%
Black	0	0.0%
Hispanic	1	.7%
Asian	6	4.4%
Native American	0	0.0%
Other	2	1.5%
Total	136	100.0%

MARITAL STATUS AND CHILDREN IN HOUSEHOLD



KEY

- Married or remarried
- Single, never married
- Divorced or separated
- Widowed

KEY

- Do not have children
- Have children

ESTIMATED HOUSEHOLD INCOME

	Count	%
\$19,000 or less	5	4.2%
\$20,000-39,999	12	10.1%
\$40,000-59,999	19	16.0%
\$60,000-79,999	24	20.2%
\$80,000-99,999	22	18.5%
\$100,000 +	37	31.1%
Total	119	100.0%