

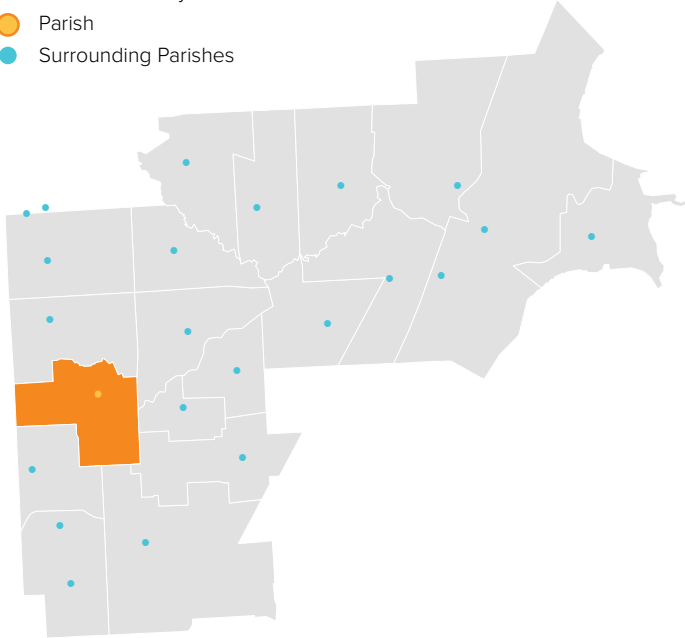
# ST. ANNE

WARREN, MI / CENTRAL MACOMB VICARIATE / NORTHEAST REGION

## Parish Profile and Survey Results

### KEY

- Parish Boundary
- Parish
- Surrounding Parishes



### TOTAL SURVEY RESPONSES

Parish ID	Name	responses
152	St. Anne	63

### PARISH LOCATION AND BOUNDARY - WITHIN VICARIATE

#### PARISH CATHOLIC POPULATION FACTS

	2000	2013	% Change
Total Registered Households	2,927	1,601	-45.3%
Total Registered Individuals	8,781	4,483	-48.9%
% of HH in Parish Boundary		25%	
% of HH Outside Parish Boundary		75%	

#### KEY U.S. CENSUS FACTS

	2000	2010	% Change
Total Households	3,943	3,310	-16.1%
Total Population	10,240	10,911	6.6%
Median Household Income	\$49,822	\$38,058	-23.6%
Median Age	27.5	22.3	-18.7%

#### PARISH FINANCIAL STATS

	2009	2013	% Change
Total Operating Income	\$1,011,273	\$857,238	-15.2%
Total Operating Expenses		\$811,743	-45.6%
LDP Debt	\$-	\$-	N/A
AOD & MCC	N/A	\$-	N/A
Outstanding payables			
Total Savings	\$47,217	\$68,307	44.7%

#### PARISH SACRAMENTAL STATS (5 YR. TREND)

	2009	2013	% Change
Baptisms	52	67	28.8%
First Communions	85	48	-43.5%
Confirmations	98	38	-61.2%
Total Marriages	30	23	-23.3%
Funerals	41	59	43.9%

# ST. ANNE

WARREN, MI / CENTRAL MACOMB VICARIATE / NORTHEAST REGION

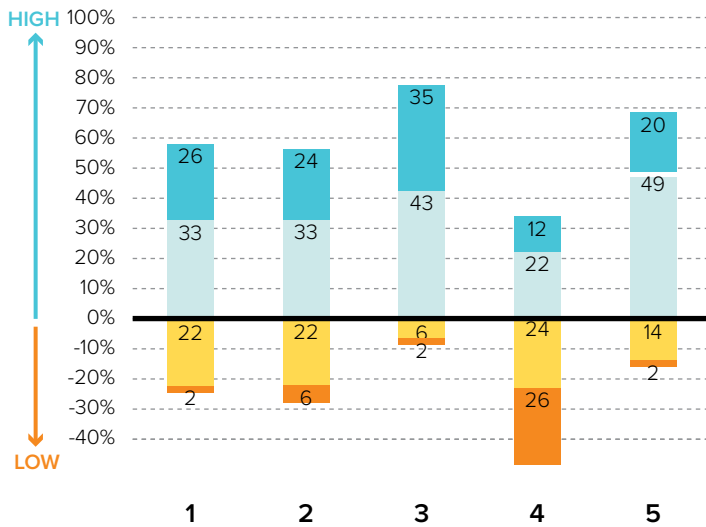
**KEY**  
 % Excellent  
 % Good  
 % Fair  
 % Poor

## Survey Results Part I: Mission Priorities

The following graphs show how parishioners rated each of the objectives associated with a mission priority area. The graphs are split between positive values for high ratings (“good” or “excellent”) and negative values for lower ratings (“fair” or “poor”). “Don’t know” responses are not shown in the graphs at right to more easily show the split between high and low ratings.

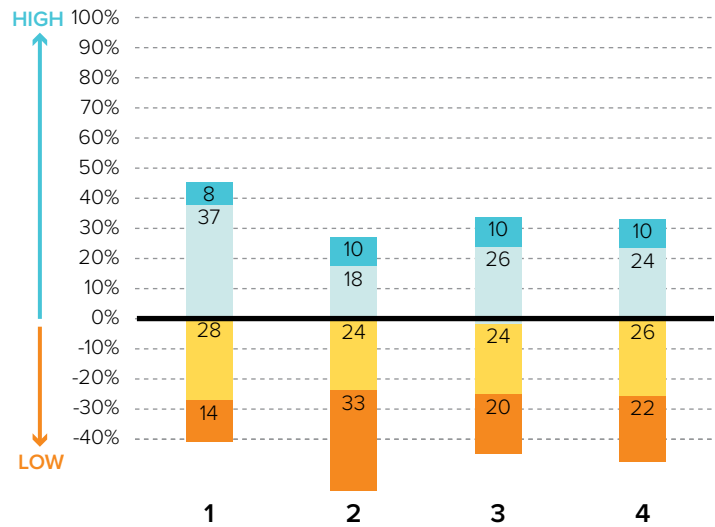
To the best of your ability, please evaluate how well your parish is doing in each of these areas.

### PRIORITY AREA: CATHOLIC SCHOOLS



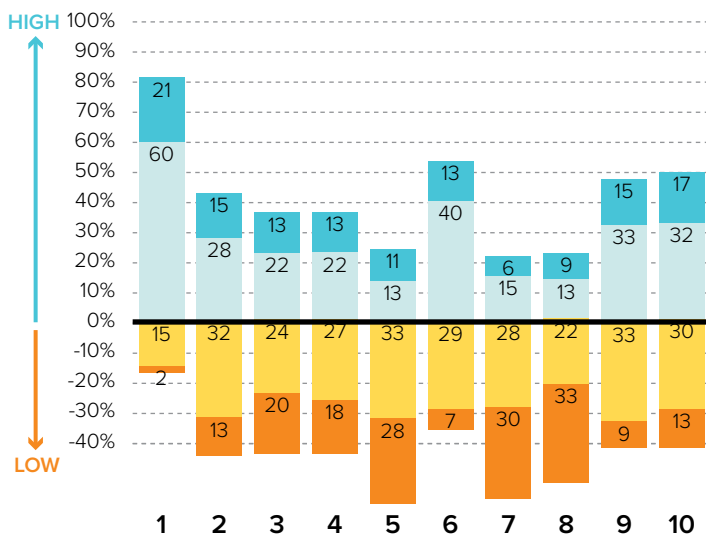
- 1 Ensuring a Catholic education is financially viable
- 2 Keeping tuition affordable to all Catholics
- 3 Maintaining a Catholic identity
- 4 Using technology effectively
- 5 Ensuring academic success and Catholic formation

### PRIORITY AREA: CHRISTIAN SERVICE AND OUTREACH



- 1 Christian service projects for the parish community
- 2 Christian service projects for youth and young adults
- 3 Building interfaith relationships
- 4 Collaborating with other community organizations

### EVANGELIZATION AND CATECHESIS



- 1 Explicitly proclaiming the Gospel of Jesus Christ
- 2 Evangelization leadership (committee, minister, etc.)
- 3 Offering ministries to evangelize adults
- 4 Offering ministries for spiritual growth
- 5 Offering programs aimed at parish renewal
- 6 Prayers for healing and spiritual reconciliation
- 7 Reaching out to inactive Catholics
- 8 Reaching out to non-Catholics
- 9 Providing adult faith formation and catechesis
- 10 Strengthening religious education

# ST. ANNE

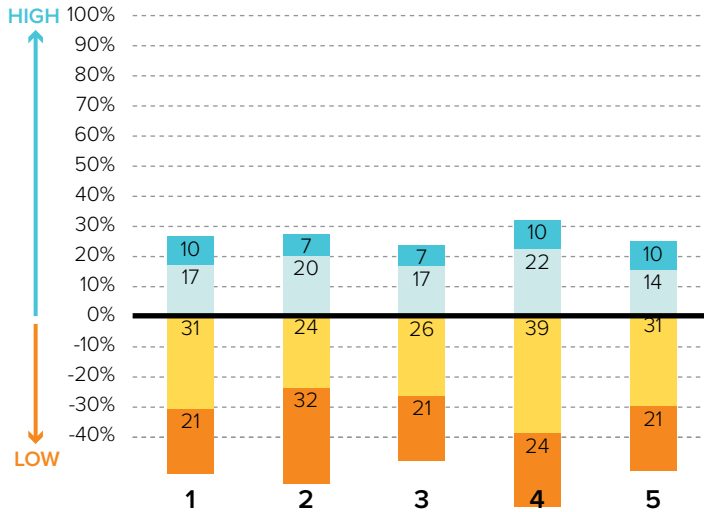
WARREN, MI / CENTRAL MACOMB VICARIATE / NORTHEAST REGION

## KEY

- % Excellent
- % Good
- % Fair
- % Poor

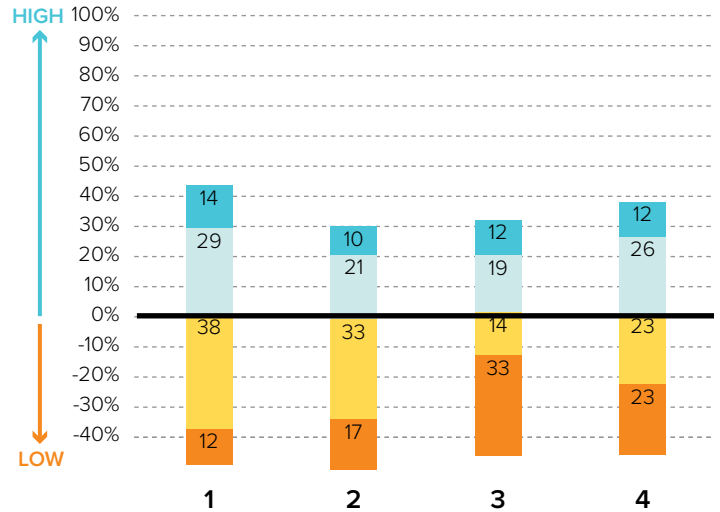
## Survey Results Part I: Mission Priorities

### PRIORITY AREA: LAY LEADERSHIP



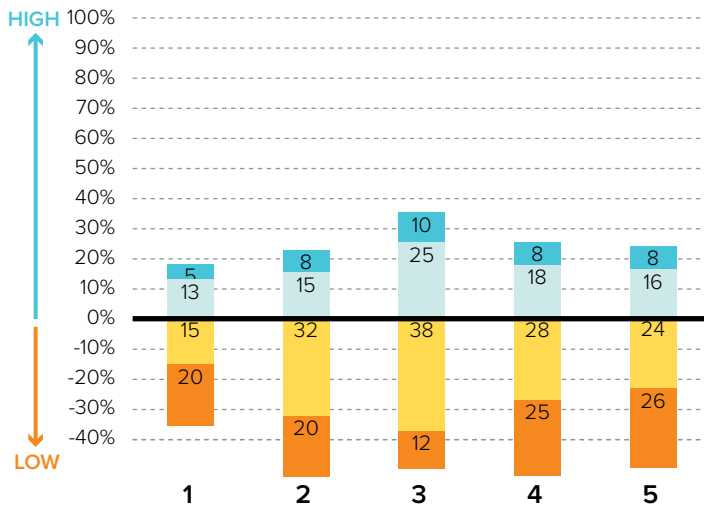
- 1 Training parishioners to identify their spiritual gifts
- 2 Increasing opportunities for lay involvement
- 3 Training and ministry for lay leaders
- 4 Encouraging parishioners to volunteer
- 5 Providing training opportunities for volunteers

### PRIORITY AREA: STEWARDSHIP AND ADMINISTRATION



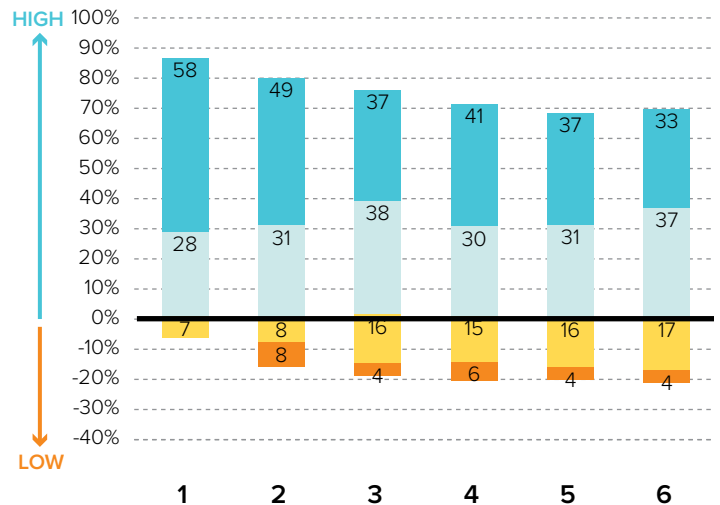
- 1 Communicating stewardship as a way of life
- 2 Forming an active Stewardship Commission
- 3 Supporting an active Finance Council
- 4 Financial transparency/accountability

### PRIORITY AREA: VOCATIONS



- 1 Forming a vocations committee
- 2 Promoting vocations to priesthood/religious life
- 3 Promoting prayer for vocations
- 4 Inviting young people to consider Church vocations
- 5 Teaching vocation awareness

### PRIORITY AREA: YOUTH AND YOUNG ADULTS



- 1 Providing regular meetings for teens
- 2 Providing special events for teens (e.g. retreats)
- 3 Engaging youth in parish life and liturgies
- 4 Providing regular meetings for young adults
- 5 Hosting special events for young adults
- 6 Engaging young adults in parish ministries and outreaches

# ST. ANNE

WARREN, MI / CENTRAL MACOMB VICARIATE / NORTHEAST REGION

## Survey Results Part II: Faith and Parish Life

### YEARS AT CURRENT PARISH

How many years have you attended Mass at your current parish?

	Count	%
Less than 1 year	2	4.9%
1-5 years	12	29.3%
6-10 years	8	19.5%
11-20 years	12	29.3%
21-30 years	3	7.3%
31+ years	4	9.8%
Total	41	100.0%

### MASS ATTENDANCE

How often do you attend Mass?



### REASONS TO MISS MASS

If you do not attend Mass regularly on Sundays, how much does each of the following explain why? % "somewhat" or "very"

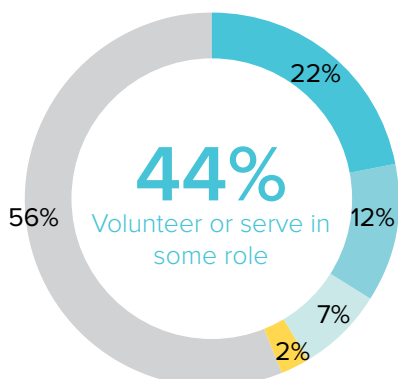
The pastor is not welcoming	43%
Demands of work, school, or sports	41%
Masses are boring/irrelevant to me	41%
Lack of children's ministries	32%
The parish is not welcoming	30%
Family concerns and needs	19%
Clusters, mergers, and closures of parishes	11%
Divorce or marriage outside of Church	7%
Health problems or a disability	4%

### REGISTRATION

Are you a registered member at your current parish?



### INVOLVEMENT IN THE PARISH



Do you serve, or have you ever served in any of the following roles in your parish?

#### KEY

- Volunteer (e.g. catechist, Vacation Bible School)
- Liturgical ministries (e.g. usher, Eucharistic Minister, lector)
- Member of a parish council, commission, or committee
- Parish staff (e.g. youth minister, business manager, DRE)
- None of the above

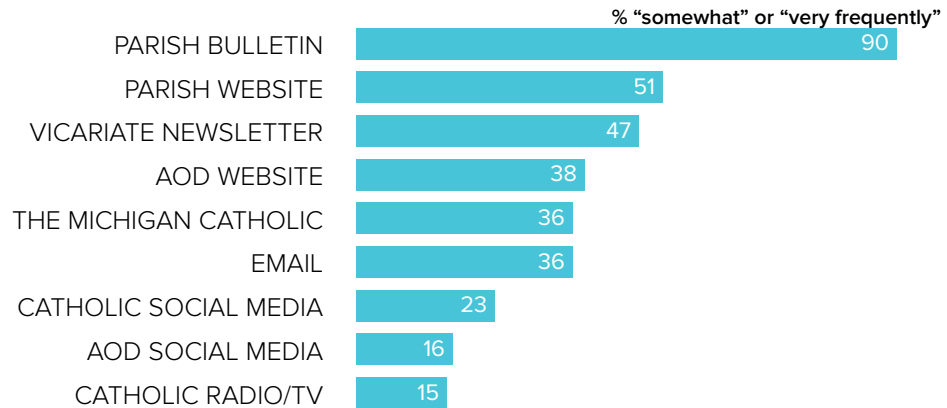
# ST. ANNE

WARREN, MI / CENTRAL MACOMB VICARIATE / NORTHEAST REGION

## Survey Results Part II: Faith and Parish Life

### COMMUNICATION METHODS

How often do you rely on the following for information about your parish, the Archdiocese, or the Catholic Church?



### PARISH CHARACTERISTICS

How important to you are these characteristics in a parish?

	% "very important"		% "very important"
Parish embraces Church teachings and values	82.5%	Opportunities for penance/confession	37.5%
Quality worship service	82.1%	Devotions (rosary, adoration, etc.)	35.0%
Catholic school	75.0%	Traditional music	32.5%
Daily and weekend Mass schedules	75.0%	Small group ministries (e.g. Bible Study)	23.1%
Children's ministries (for all age groups)	55.0%	Mass in language(s) other than English	7.7%
Parish social groups/gatherings	45.0%		
Service activities	45.0%		
Contemporary music	40.0%		

### PASTOR CHARACTERISTICS

How important to you are these characteristics in a pastor?

	% "very important"
Welcoming spirit	95.0%
Engaging preaching style	92.5%
Ability to connect scripture to the present	90.0%
Manages parish resources effectively	85.0%
Invites people into a personal relationship w/ Jesus	80.0%
Communicates parish priorities	80.0%
Values input from laity	72.5%
Challenges people to live a life of discipleship	67.5%

### CHALLENGES FACING THE CHURCH

How would you rate the following as challenges facing the Catholic Church in Southeast Michigan today?

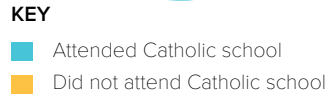
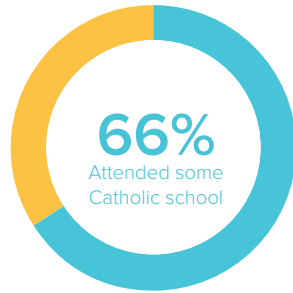
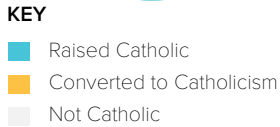
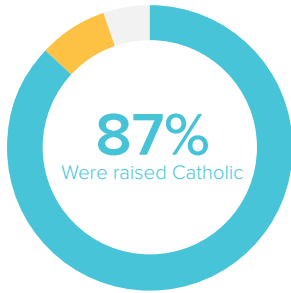
	% "serious challenge"
<b>TOP 5 RESPONSES</b>	
Shortage of priests/decline in vocations	87.2%
Priest sexual abuse	38.5%
Clustering, merging, and closing of parishes	56.4%
Church funds/financial management	57.9%
Engaging teens and young adults in parish life	71.8%

# ST. ANNE

WARREN, MI / CENTRAL MACOMB VICARIATE / NORTHEAST REGION

## Survey Results Part III: Demographics

### CATHOLIC BACKGROUND AND EDUCATION



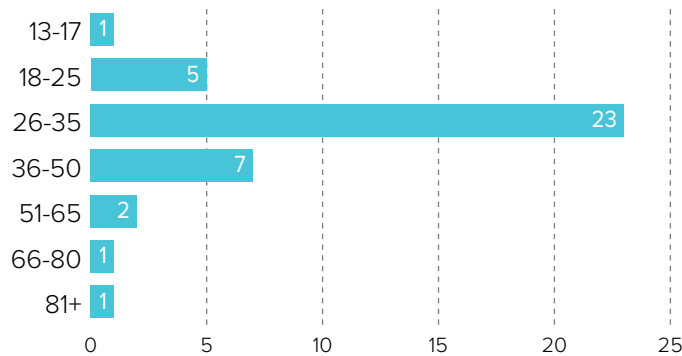
### GENDER



76% WOMEN

24% MEN

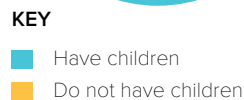
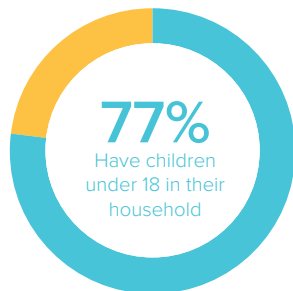
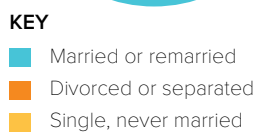
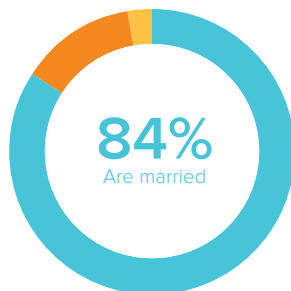
### AGE



### RACIAL OR ETHNIC BACKGROUND

	Count	%
White	38	100.0%
Black	0	0.0%
Hispanic	0	0.0%
Asian	0	0.0%
Native American	0	0.0%
Other	0	0.0%
<b>Total</b>	<b>38</b>	<b>100.0%</b>

### MARITAL STATUS AND CHILDREN IN HOUSEHOLD



### ESTIMATED HOUSEHOLD INCOME

	Count	%
\$19,000 or less	1	2.6%
\$20,000-39,999	2	5.3%
\$40,000-59,999	8	21.1%
\$60,000-79,999	4	10.5%
\$80,000-99,999	6	15.8%
\$100,000 +	17	44.7%
<b>Total</b>	<b>38</b>	<b>100.0%</b>