

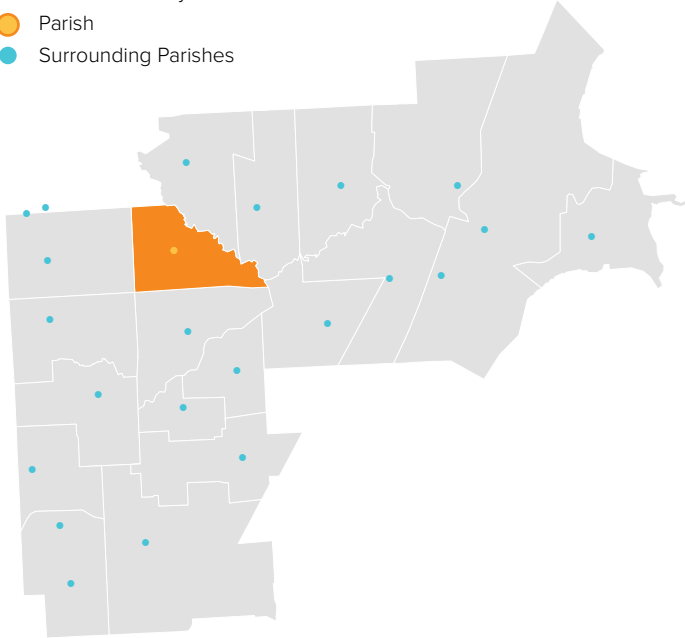
# ST. EPHREM

STERLING HEIGHTS, MI / CENTRAL MACOMB VICARIATE / NORTHEAST REGION

## Parish Profile and Survey Results

### KEY

- Parish Boundary
- Parish
- Surrounding Parishes



### TOTAL SURVEY RESPONSES

Parish ID	Name	responses
312	St. Ephrem	176

### PARISH LOCATION AND BOUNDARY - WITHIN VICARIATE

#### PARISH CATHOLIC POPULATION FACTS

	2000	2013	% Change
Total Registered Households	1,179	585	-50.4%
Total Registered Individuals	3,537	1,638	-53.7%
% of HH in Parish Boundary		65%	
% of HH Outside Parish Boundary		35%	

#### KEY U.S. CENSUS FACTS

	2000	2010	% Change
Total Households	6,835	7,665	12.1%
Total Population	16,994	16,947	-0.3%
Median Household Income	\$56,884	\$55,745	-2.0%
Median Age	37.4	32.5	-13.2%

#### PARISH FINANCIAL STATS

	2009	2013	% Change
Total Operating Income	\$603,420	\$648,772	7.5%
Total Operating Expenses	\$505,721	\$558,075	10.4%
LDP Debt	\$-	\$-	N/A
AOD & MCC	N/A	\$-	N/A
Outstanding payables			
Total Savings	\$387,306	\$393,926	1.7%

#### PARISH SACRAMENTAL STATS (5 YR. TREND)

	2009	2013	% Change
Baptisms	13	8	-38.5%
First Communion	20	18	-10.0%
Confirmations	24	15	-37.5%
Total Marriages	3	3	0.0%
Funerals	31	23	-25.8%

# ST. EPHREM

STERLING HEIGHTS, MI / CENTRAL MACOMB VICARIATE / NORTHEAST REGION

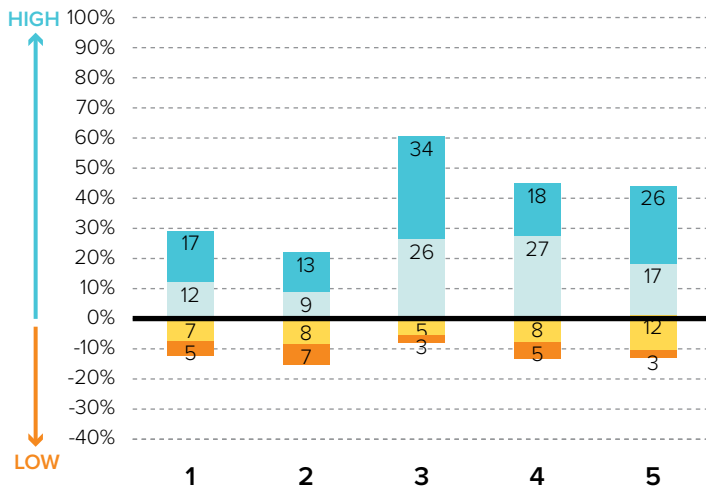
**KEY**  
 % Excellent  
 % Good  
 % Fair  
 % Poor

## Survey Results Part I: Mission Priorities

The following graphs show how parishioners rated each of the objectives associated with a mission priority area. The graphs are split between positive values for high ratings (“good” or “excellent”) and negative values for lower ratings (“fair” or “poor”). “Don’t know” responses are not shown in the graphs at right to more easily show the split between high and low ratings.

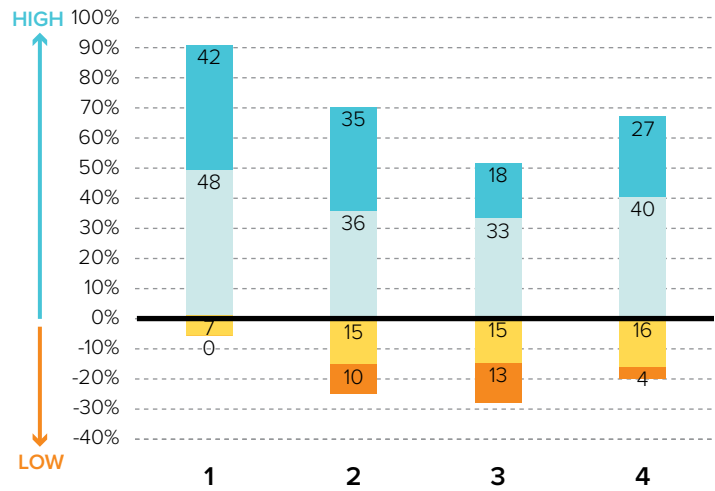
To the best of your ability, please evaluate how well your parish is doing in each of these areas.

### PRIORITY AREA: CATHOLIC SCHOOLS



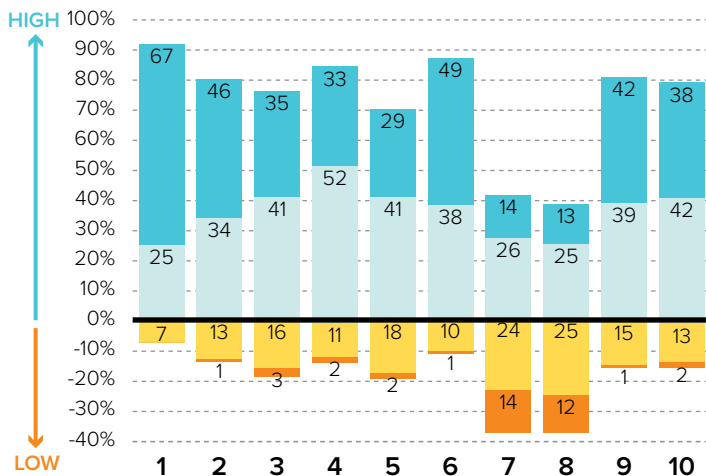
- 1 Ensuring a Catholic education is financially viable
- 2 Keeping tuition affordable to all Catholics
- 3 Maintaining a Catholic identity
- 4 Using technology effectively
- 5 Ensuring academic success and Catholic formation

### PRIORITY AREA: CHRISTIAN SERVICE AND OUTREACH



- 1 Christian service projects for the parish community
- 2 Christian service projects for youth and young adults
- 3 Building interfaith relationships
- 4 Collaborating with other community organizations

### EVANGELIZATION AND CATECHESIS



- 1 Explicitly proclaiming the Gospel of Jesus Christ
- 2 Evangelization leadership (committee, minister, etc.)
- 3 Offering ministries to evangelize adults
- 4 Offering ministries for spiritual growth
- 5 Offering programs aimed at parish renewal
- 6 Prayers for healing and spiritual reconciliation
- 7 Reaching out to inactive Catholics
- 8 Reaching out to non-Catholics
- 9 Providing adult faith formation and catechesis
- 10 Strengthening religious education

# ST. EPHREM

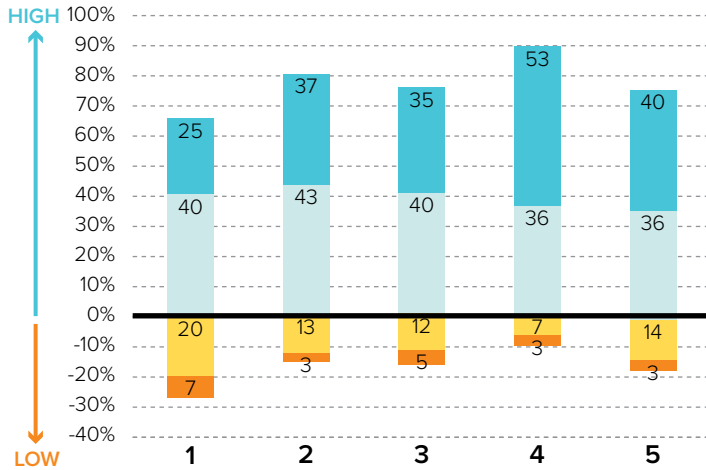
STERLING HEIGHTS, MI / CENTRAL MACOMB VICARIATE / NORTHEAST REGION

## KEY

- % Excellent
- % Good
- % Fair
- % Poor

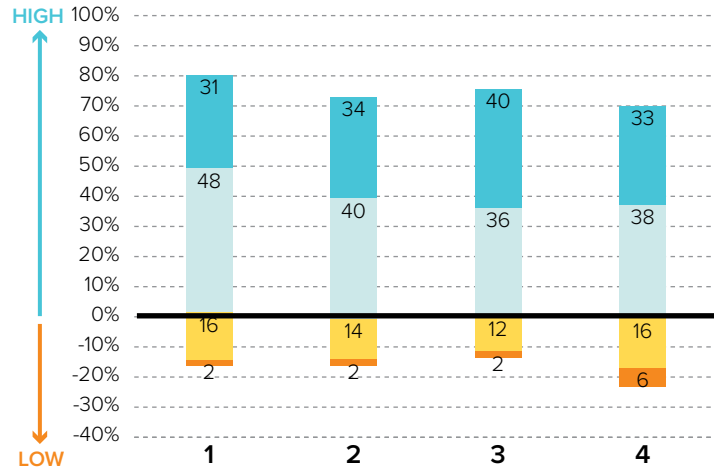
## Survey Results Part I: Mission Priorities

### PRIORITY AREA: LAY LEADERSHIP



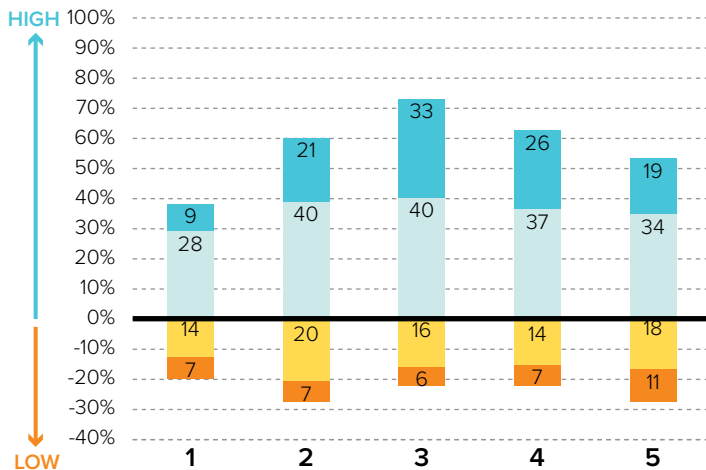
- 1 Training parishioners to identify their spiritual gifts
- 2 Increasing opportunities for lay involvement
- 3 Training and ministry for lay leaders
- 4 Encouraging parishioners to volunteer
- 5 Providing training opportunities for volunteers

### PRIORITY AREA: STEWARDSHIP AND ADMINISTRATION



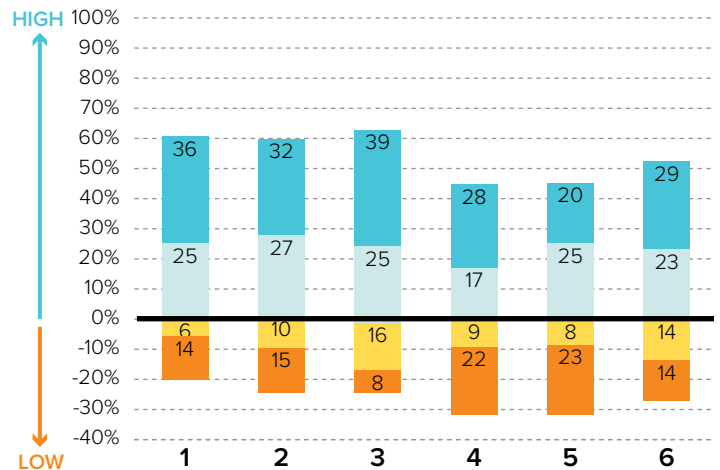
- 1 Communicating stewardship as a way of life
- 2 Forming an active Stewardship Commission
- 3 Supporting an active Finance Council
- 4 Financial transparency/accountability

### PRIORITY AREA: VOCATIONS



- 1 Forming a vocations committee
- 2 Promoting vocations to priesthood/religious life
- 3 Promoting prayer for vocations
- 4 Inviting young people to consider Church vocations
- 5 Teaching vocation awareness

### PRIORITY AREA: YOUTH AND YOUNG ADULTS



- 1 Providing regular meetings for teens
- 2 Providing special events for teens (e.g. retreats)
- 3 Engaging youth in parish life and liturgies
- 4 Providing regular meetings for young adults
- 5 Hosting special events for young adults
- 6 Engaging young adults in parish ministries and outreaches

# ST. EPHREM

STERLING HEIGHTS, MI / CENTRAL MACOMB VICARIATE / NORTHEAST REGION

## Survey Results Part II: Faith and Parish Life

### YEARS AT CURRENT PARISH

How many years have you attended Mass at your current parish?

	Count	%
Less than 1 year	0	0.0%
1-5 years	2	1.8%
6-10 years	13	11.9%
11-20 years	35	32.1%
21-30 years	19	17.4%
31+ years	40	36.7%
Total	109	100.0%

### MASS ATTENDANCE

How often do you attend Mass?



### REASONS TO MISS MASS

If you do not attend Mass regularly on Sundays, how much does each of the following explain why? % "somewhat" or "very"

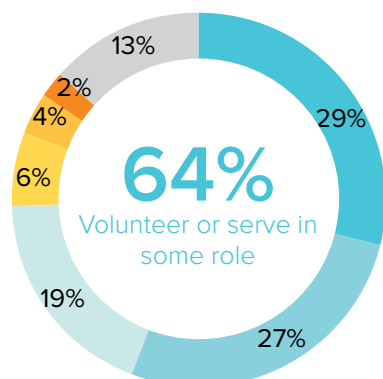
Demands of work, school, or sports	30.8%
Family concerns and needs	26.2%
Health problems or a disability	23.4%
Lack of children's ministries	9.2%
Clusters, mergers, and closures of parishes	7.7%
Masses are boring/irrelevant to me	4.8%
The parish is not welcoming	4.7%
The pastor is not welcoming	4.7%
Divorce or marriage outside of Church	4.7%

### REGISTRATION

Are you a registered member at your current parish?



### INVOLVEMENT IN THE PARISH



Do you serve, or have you ever served in any of the following roles in your parish?

#### KEY

- Liturgical ministries (e.g. usher, Eucharistic Minister, lector)
- Volunteer (e.g. catechist, Vacation Bible School)
- Member of a parish council, commission, or committee
- Music ministries (e.g. choir, musician, director)
- Parish support staff (e.g. secretary, maintenance)
- Parish staff (e.g. youth minister, business manager, DRE)
- None of the above

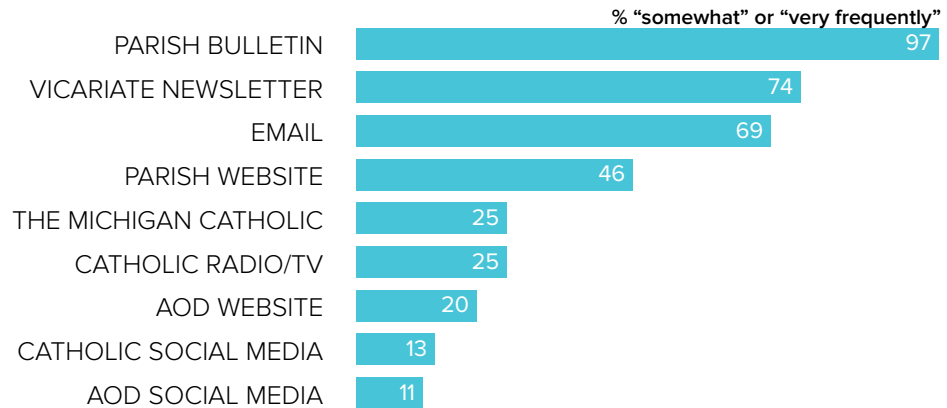
# ST. EPHREM

STERLING HEIGHTS, MI / CENTRAL MACOMB VICARIATE / NORTHEAST REGION

## Survey Results Part II: Faith and Parish Life

### COMMUNICATION METHODS

How often do you rely on the following for information about your parish, the Archdiocese, or the Catholic Church?



### PARISH CHARACTERISTICS

How important to you are these characteristics in a parish?

	% "very important"		% "very important"
Quality worship service	92.7%	Opportunities for penance/confession	29.5%
Parish embraces Church teachings and values	77.5%	Small group ministries (e.g. Bible Study)	29.2%
Daily and weekend Mass schedules	68.2%	Devotions (rosary, adoration, etc.)	28.4%
Children's ministries (for all age groups)	57.1%	Catholic school	17.9%
Parish social groups/gatherings	43.6%	Mass in language(s) other than English	2.9%
Traditional music	38.1%		
Service activities	33.8%		
Contemporary music	33.1%		

### PASTOR CHARACTERISTICS

How important to you are these characteristics in a pastor?

	% "very important"
Welcoming spirit	95.4%
Ability to connect scripture to the present	92.3%
Invites people into a personal relationship w/ Jesus	87.2%
Engaging preaching style	86.7%
Manages parish resources effectively	83.9%
Values input from laity	78.9%
Communicates parish priorities	76.4%
Challenges people to live a life of discipleship	70.0%

### CHALLENGES FACING THE CHURCH

How would you rate the following as challenges facing the Catholic Church in Southeast Michigan today?

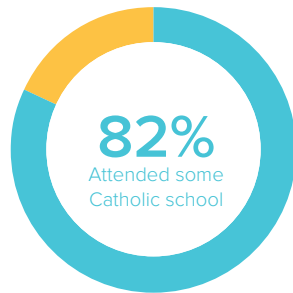
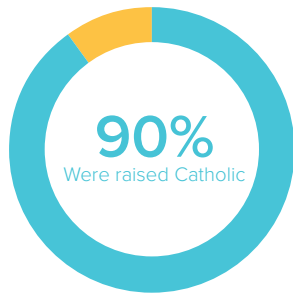
	% "serious challenge"
<b>TOP 5 RESPONSES</b>	
Shortage of priests/decline in vocations	90.6%
Engaging teens and young adults in parish life	68.8%
Church funds/financial management	59.7%
Priest sexual abuse	57.9%
Society in general is less religious	56.5%

# ST. EPHREM

STERLING HEIGHTS, MI / CENTRAL MACOMB VICARIATE / NORTHEAST REGION

## Survey Results Part III: Demographics

### CATHOLIC BACKGROUND AND EDUCATION



**KEY**

- Raised Catholic
- Converted to Catholicism
- Not Catholic

**KEY**

- Attended Catholic school
- Did not attend Catholic school

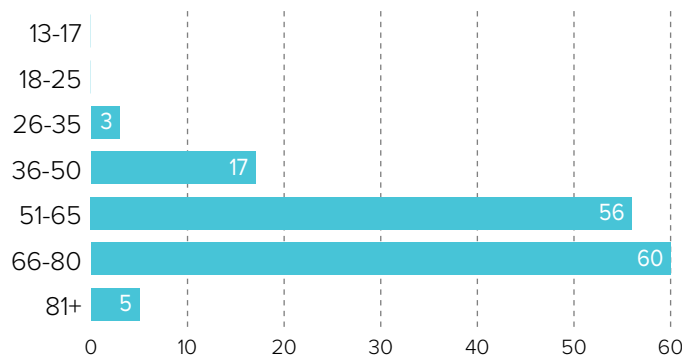
### GENDER



58% WOMEN

42% MEN

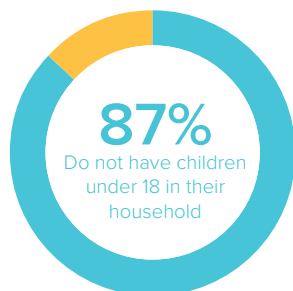
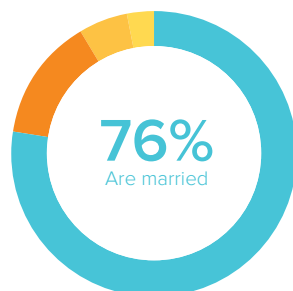
### AGE



### RACIAL OR ETHNIC BACKGROUND

	Count	%
White	137	97.9%
Black	1	0.7%
Hispanic	0	0.0%
Asian	2	1.4%
Native American	0	0.0%
Other	0	0.0%
<b>Total</b>	<b>140</b>	<b>100.0%</b>

### MARITAL STATUS AND CHILDREN IN HOUSEHOLD



**KEY**

- Married or remarried
- Widowed
- Divorced or separated
- Single, never married

**KEY**

- Do not have children
- Have children

### ESTIMATED HOUSEHOLD INCOME

	Count	%
\$19,000 or less	5	4.0%
\$20,000-39,999	28	22.4%
\$40,000-59,999	34	27.2%
\$60,000-79,999	19	15.2%
\$80,000-99,999	16	12.8%
\$100,000 +	23	18.4%
<b>Total</b>	<b>125</b>	<b>100.0%</b>