

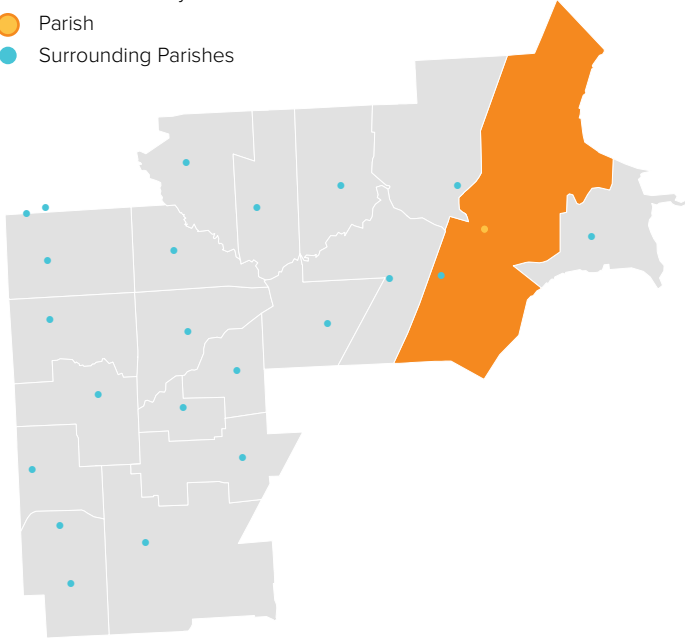
# ST. LOUIS

CLINTON TOWNSHIP, MI / CENTRAL MACOMB VICARIATE / NORTHEAST REGION

## Parish Profile and Survey Results

### KEY

- Parish Boundary
- Parish
- Surrounding Parishes



### TOTAL SURVEY RESPONSES

Parish ID	Name	responses
514	St. Louis	400

### PARISH LOCATION AND BOUNDARY - WITHIN VICARIATE

#### PARISH CATHOLIC POPULATION FACTS

	2000	2013	% Change
Total Registered Households	1,472	1,024	-30.4%
Total Registered Individuals	4,416	2,867	-35.1%
% of HH in Parish Boundary		55%	
% of HH Outside Parish Boundary		45%	

#### KEY U.S. CENSUS FACTS

	2000	2010	% Change
Total Households	19,655	18,981	-3.4%
Total Population	45,691	45,471	-0.5%
Median Household Income	\$42,921	\$40,371	-5.9%
Median Age	31.4	25.2	-19.8%

#### PARISH FINANCIAL STATS

	08-09	12-13	% Change
Total Operating Income	\$796,563	\$719,660	-9.7%
Total Operating Expenses	\$745,279	\$568,060	-23.8%
LDP Debt	\$-	\$-	0.0%
AOD & MCC	N/A	\$5,747	N/A
Outstanding payables			
Total Savings	\$232,239	\$982,511	323.1%

#### PARISH SACRAMENTAL STATS (5 YR. TREND)

	2008	2013	% Change
Baptisms	33	23	-30.3%
First Communion	24	20	-16.7%
Confirmations	13	18	38.5%
Total Marriages	17	11	-35.3%
Funerals	38	38	0.0%

# ST. LOUIS

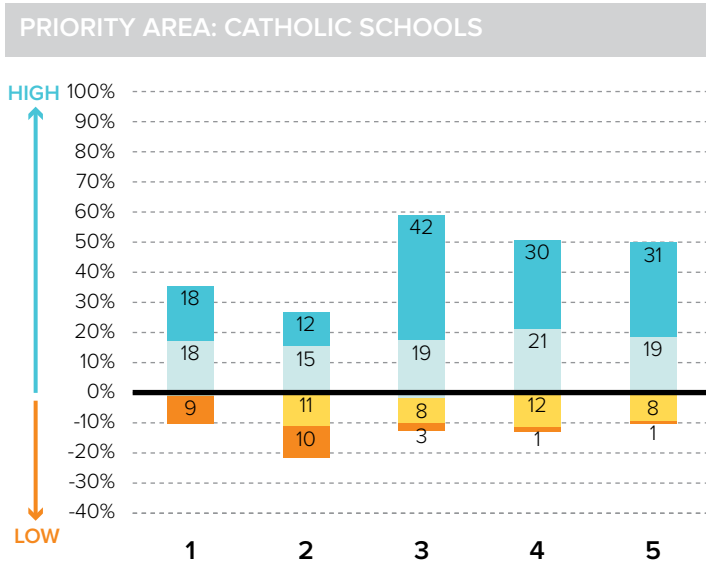
CLINTON TOWNSHIP, MI / CENTRAL MACOMB VICARIATE / NORTHEAST REGION

**KEY**  
 % Excellent  
 % Good  
 % Fair  
 % Poor

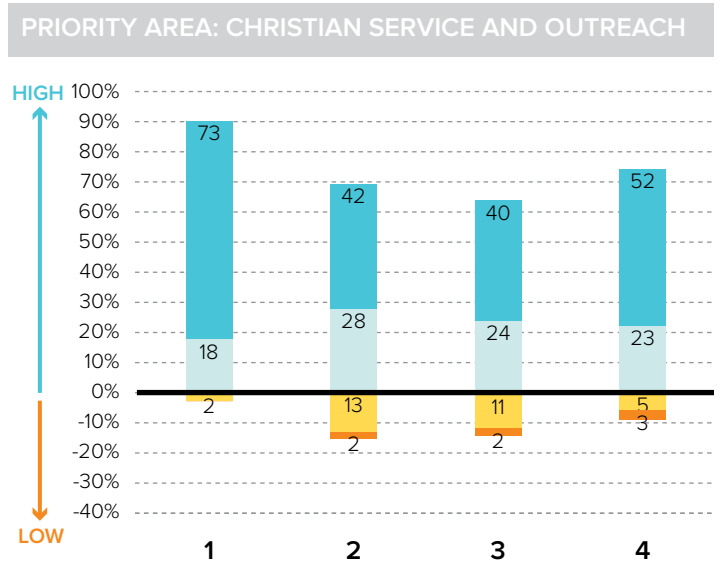
## Survey Results Part I: Mission Priorities

The following graphs show how parishioners rated each of the objectives associated with a mission priority area. The graphs are split between positive values for high ratings (“good” or “excellent”) and negative values for lower ratings (“fair” or “poor”). “Don’t know” responses are not shown in the graphs at right to more easily show the split between high and low ratings.

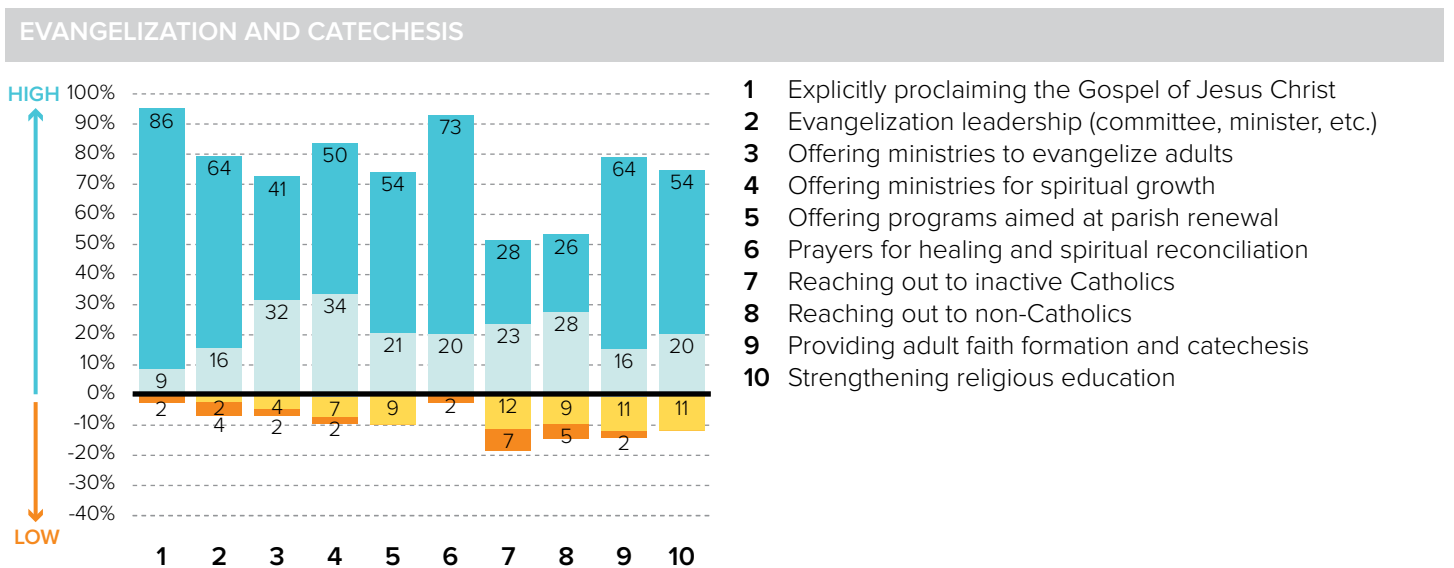
To the best of your ability, please evaluate how well your parish is doing in each of these areas.



- 1 Ensuring a Catholic education is financially viable
- 2 Keeping tuition affordable to all Catholics
- 3 Maintaining a Catholic identity
- 4 Using technology effectively
- 5 Ensuring academic success and Catholic formation



- 1 Christian service projects for the parish community
- 2 Christian service projects for youth and young adults
- 3 Building interfaith relationships
- 4 Collaborating with other community organizations



- 1 Explicitly proclaiming the Gospel of Jesus Christ
- 2 Evangelization leadership (committee, minister, etc.)
- 3 Offering ministries to evangelize adults
- 4 Offering ministries for spiritual growth
- 5 Offering programs aimed at parish renewal
- 6 Prayers for healing and spiritual reconciliation
- 7 Reaching out to inactive Catholics
- 8 Reaching out to non-Catholics
- 9 Providing adult faith formation and catechesis
- 10 Strengthening religious education

# ST. LOUIS

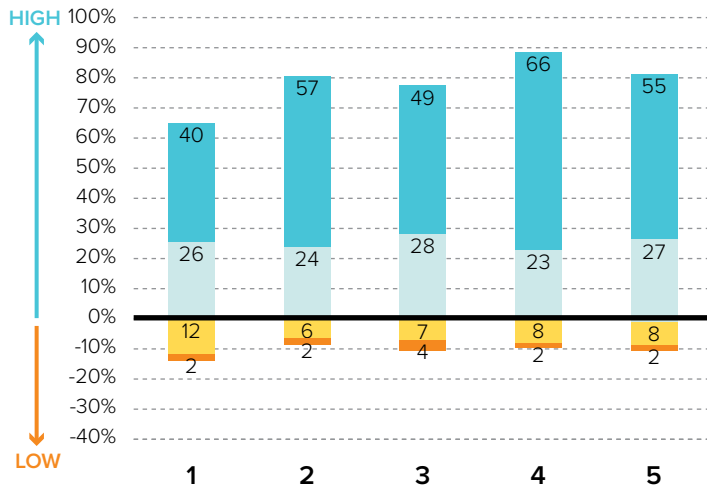
CLINTON TOWNSHIP, MI / CENTRAL MACOMB VICARIATE / NORTHEAST REGION

## KEY

- % Excellent
- % Good
- % Fair
- % Poor

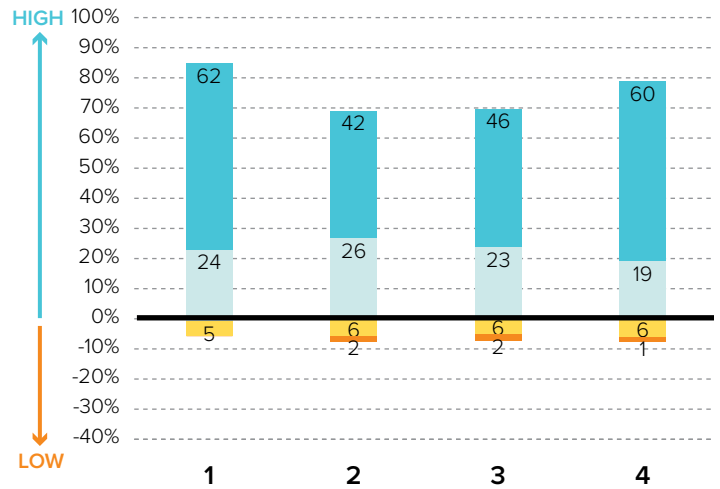
## Survey Results Part I: Mission Priorities

### PRIORITY AREA: LAY LEADERSHIP



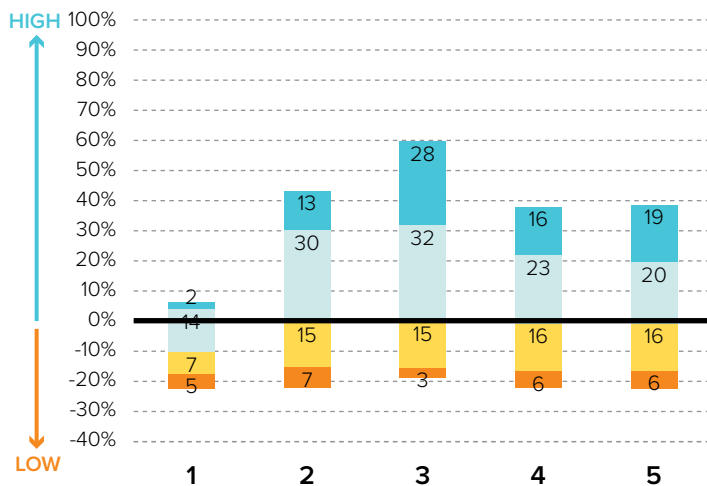
- 1 Training parishioners to identify their spiritual gifts
- 2 Increasing opportunities for lay involvement
- 3 Training and ministry for lay leaders
- 4 Encouraging parishioners to volunteer
- 5 Providing training opportunities for volunteers

### PRIORITY AREA: STEWARDSHIP AND ADMINISTRATION



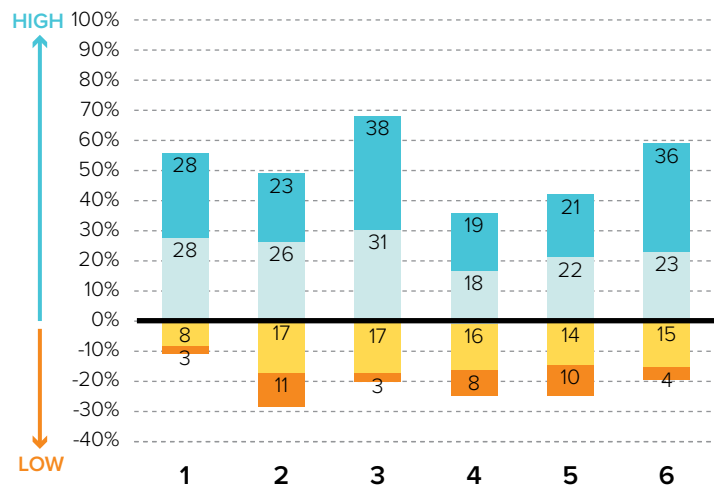
- 1 Communicating stewardship as a way of life
- 2 Forming an active Stewardship Commission
- 3 Supporting an active Finance Council
- 4 Financial transparency/accountability

### PRIORITY AREA: VOCATIONS



- 1 Forming a vocations committee
- 2 Promoting vocations to priesthood/religious life
- 3 Promoting prayer for vocations
- 4 Inviting young people to consider Church vocations
- 5 Teaching vocation awareness

### PRIORITY AREA: YOUTH AND YOUNG ADULTS



- 1 Providing regular meetings for teens
- 2 Providing special events for teens (e.g. retreats)
- 3 Engaging youth in parish life and liturgies
- 4 Providing regular meetings for young adults
- 5 Hosting special events for young adults
- 6 Engaging young adults in parish ministries and outreaches

# ST. LOUIS

CLINTON TOWNSHIP, MI / CENTRAL MACOMB VICARIATE / NORTHEAST REGION

## Survey Results Part II: Faith and Parish Life

### YEARS AT CURRENT PARISH

How many years have you attended Mass at your current parish?

	Count	%
Less than 1 year	4	9.3%
1-5 years	10	23.3%
6-10 years	8	18.6%
11-20 years	5	11.6%
21-30 years	6	14.0%
31+ years	10	23.3%
Total	43	100.0%

### MASS ATTENDANCE

How often do you attend Mass?



### REASONS TO MISS MASS

If you do not attend Mass regularly on Sundays, how much does each of the following explain why? % "somewhat" or "very"

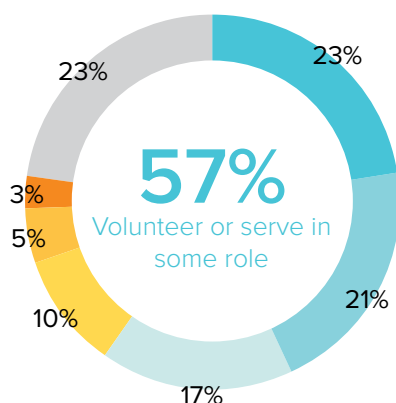
Demands of work, school, or sports	54.5%
Family concerns and needs	29.8%
Health problems or a disability	25.7%
Clusters, mergers, and closures of parishes	9.0%
Divorce or marriage outside of Church	3.4%
Masses are boring/irrelevant to me	3.4%
The parish is not welcoming	3.3%
Lack of children's ministries	2.2%
The pastor is not welcoming	2.2%

### REGISTRATION

Are you a registered member at your current parish?



### INVOLVEMENT IN THE PARISH



Do you serve, or have you ever served in any of the following roles in your parish?

#### KEY

- Volunteer (e.g. catechist, Vacation Bible School)
- Member of a parish council, commission, or committee
- Liturgical ministries (e.g. usher, Eucharistic Minister, lector)
- Music ministries (e.g. choir, musician, director)
- Parish support staff (e.g. secretary, maintenance)
- Parish staff (e.g. youth minister, business manager, DRE)
- None of the above

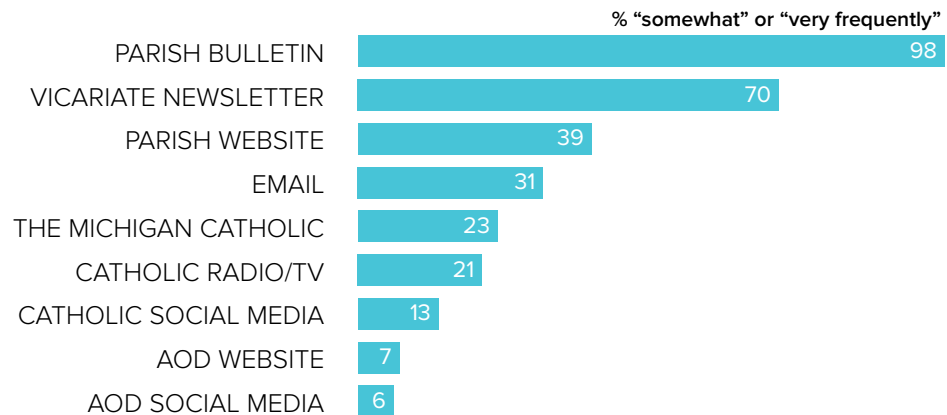
# ST. LOUIS

CLINTON TOWNSHIP, MI / CENTRAL MACOMB VICARIATE / NORTHEAST REGION

## Survey Results Part II: Faith and Parish Life

### COMMUNICATION METHODS

How often do you rely on the following for information about your parish, the Archdiocese, or the Catholic Church?



### PARISH CHARACTERISTICS

How important to you are these characteristics in a parish?

	% "very important"		% "very important"
Quality worship service	97.6%	Small group ministries (e.g. Bible Study)	37.2%
Parish embraces Church teachings and values	71.4%	Opportunities for penance/confession	36.4%
Daily and weekend Mass schedules	68.3%	Devotions (rosary, adoration, etc.)	28.6%
Children's ministries (for all age groups)	60.6%	Catholic school	27.5%
Contemporary music	53.3%	Mass in language(s) other than English	3.4%
Service activities	52.9%		
Parish social groups/gatherings	50.8%		
Traditional music	43.5%		

### PASTOR CHARACTERISTICS

How important to you are these characteristics in a pastor?

	% "very important"
Welcoming spirit	95.3%
Ability to connect scripture to the present	91.2%
Invites people into a personal relationship w/ Jesus	89.8%
Engaging preaching style	88.6%
Manages parish resources effectively	80.4%
Values input from laity	79.0%
Communicates parish priorities	77.3%
Challenges people to live a life of discipleship	76.2%

### CHALLENGES FACING THE CHURCH

How would you rate the following as challenges facing the Catholic Church in Southeast Michigan today?

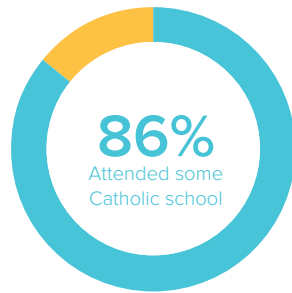
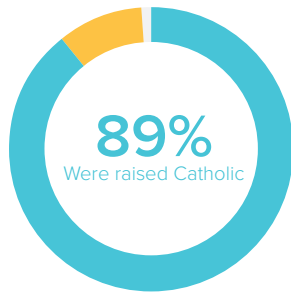
	% "serious challenge"
<b>TOP 5 RESPONSES</b>	
Shortage of priests/decline in vocations	83.3%
Engaging teens and young adults in parish life	65.5%
Clustering, merging, and closing of parishes	64.8%
Priest sexual abuse	63.1%
Church funds/financial management	55.6%

# ST. LOUIS

CLINTON TOWNSHIP, MI / CENTRAL MACOMB VICARIATE / NORTHEAST REGION

## Survey Results Part III: Demographics

### CATHOLIC BACKGROUND AND EDUCATION



**KEY**

- Raised Catholic
- Converted to Catholicism
- Not Catholic

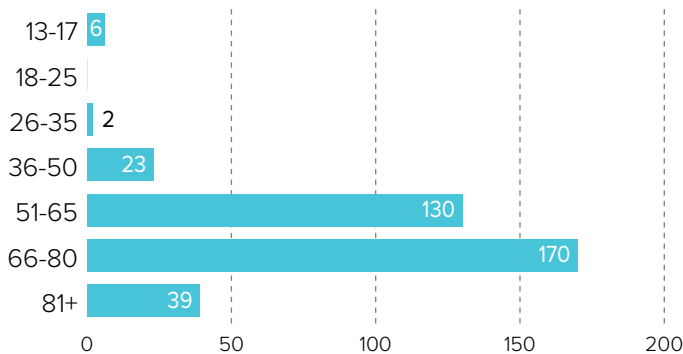
**KEY**

- Attended Catholic school
- Did not attend Catholic school

### GENDER



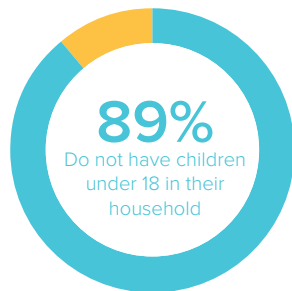
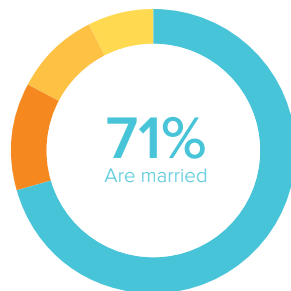
### AGE



### RACIAL OR ETHNIC BACKGROUND

	Count	%
White	358	98.6%
Black	0	0.0%
Hispanic	2	0.6%
Asian	0	0.0%
Native American	0	0.0%
Other	3	0.8%
<b>Total</b>	<b>363</b>	<b>100.0%</b>

### MARITAL STATUS AND CHILDREN IN HOUSEHOLD



**KEY**

- Married or remarried
- Divorced or separated
- Widowed
- Single, never married

**KEY**

- Do not have children
- Have children

### ESTIMATED HOUSEHOLD INCOME

	Count	%
\$19,000 or less	35	11.7%
\$20,000-39,999	93	31.0%
\$40,000-59,999	70	23.3%
\$60,000-79,999	38	12.7%
\$80,000-99,999	25	8.3%
\$100,000 +	39	13.0%
<b>Total</b>	<b>300</b>	<b>100.0%</b>