

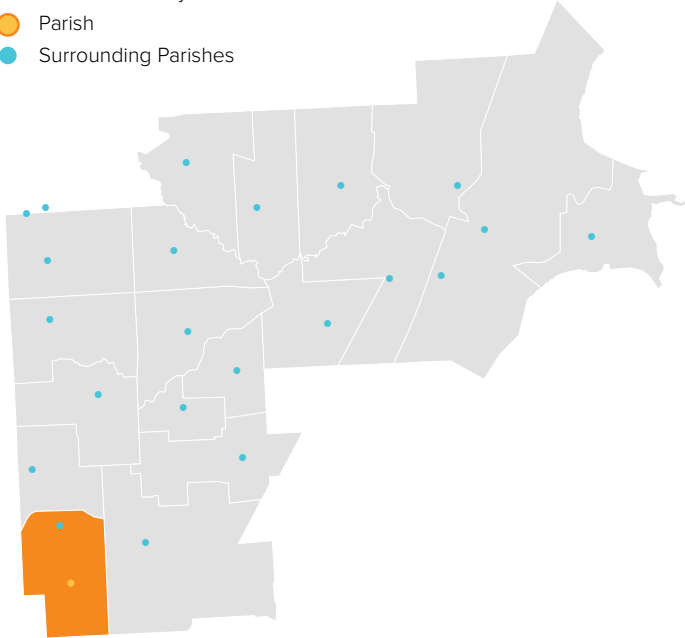
# ST. MARK

WARREN, MI / CENTRAL MACOMB VICARIATE / NORTHEAST REGION

## Parish Profile and Survey Results

### KEY

- Parish Boundary
- Parish
- Surrounding Parishes



### TOTAL SURVEY RESPONSES

Parish ID	Name	responses
534	St. Mark	70

### PARISH LOCATION AND BOUNDARY - WITHIN VICARIATE

#### PARISH CATHOLIC POPULATION FACTS

	2000	2013	% Change
Total Registered Households	1,540	1,085	-29.5%
Total Registered Individuals	4,620	3,038	-34.2%
% of HH in Parish Boundary		73%	
% of HH Outside Parish Boundary		27%	

#### KEY U.S. CENSUS FACTS

	2000	2010	% Change
Total Households	9,615	8,278	-13.9%
Total Population	23,875	23,474	-1.7%
Median Household Income	\$42,059	\$41,369	-1.6%
Median Age	35.5	31.7	-10.7%

#### PARISH FINANCIAL STATS

	2009	2013	% Change
Total Operating Income	\$395,665	\$524,843	32.6%
Total Operating Expenses	\$364,919	\$404,148	10.8%
LDP Debt	\$-	\$-	N/A
AOD & MCC	N/A	\$-	N/A
Outstanding payables			
Total Savings	\$24,619	\$234,993	854.5%

#### PARISH SACRAMENTAL STATS (5 YR. TREND)

	2009	2013	% Change
Baptisms	17	15	-11.8%
First Communion	17	11	-35.3%
Confirmations	20	11	-45.0%
Total Marriages	8	2	-75.0%
Funerals	45	38	-15.6%

# ST. MARK

WARREN, MI / CENTRAL MACOMB VICARIATE / NORTHEAST REGION

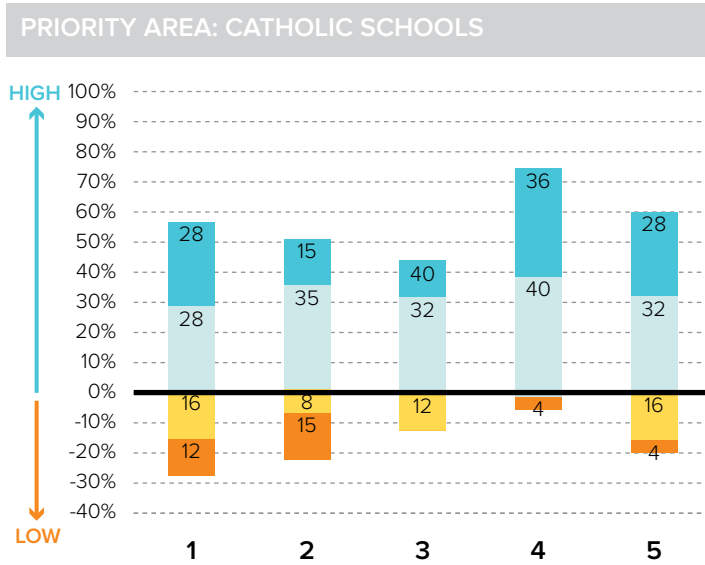
## KEY

- % Excellent
- % Good
- % Fair
- % Poor

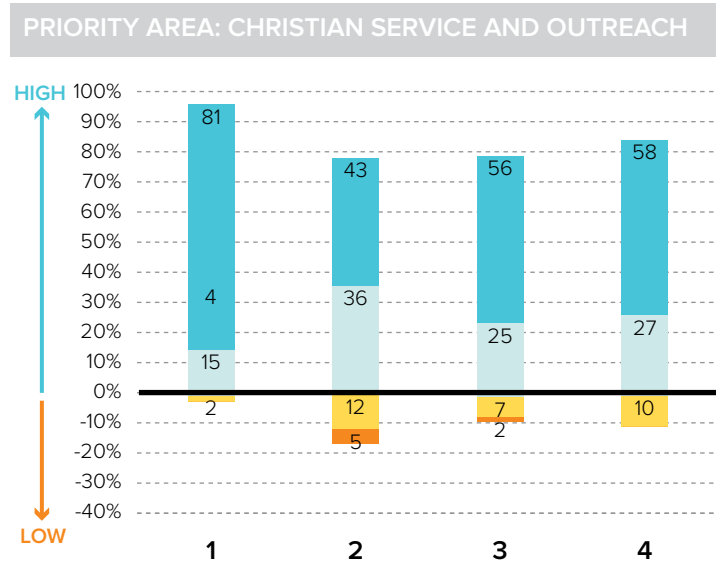
## Survey Results Part I: Mission Priorities

The following graphs show how parishioners rated each of the objectives associated with a mission priority area. The graphs are split between positive values for high ratings (“good” or “excellent”) and negative values for lower ratings (“fair” or “poor”). “Don’t know” responses are not shown in the graphs at right to more easily show the split between high and low ratings.

To the best of your ability, please evaluate how well your parish is doing in each of these areas.

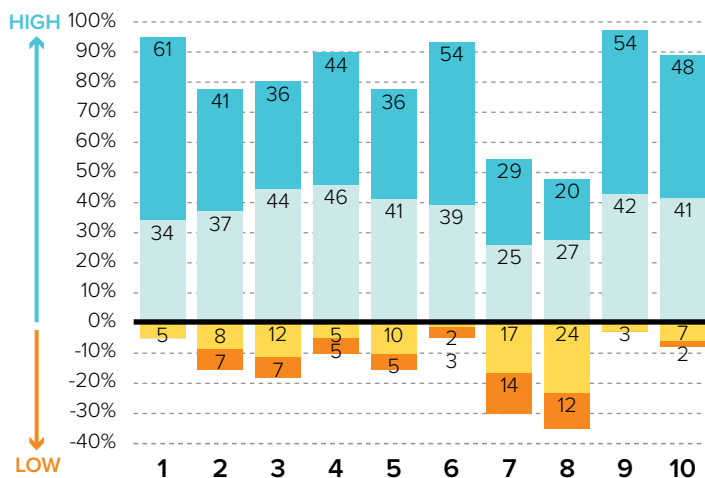


- 1 Ensuring a Catholic education is financially viable
- 2 Keeping tuition affordable to all Catholics
- 3 Maintaining a Catholic identity
- 4 Using technology effectively
- 5 Ensuring academic success and Catholic formation



- 1 Christian service projects for the parish community
- 2 Christian service projects for youth and young adults
- 3 Building interfaith relationships
- 4 Collaborating with other community organizations

**EVANGELIZATION AND CATECHESIS**



- 1 Explicitly proclaiming the Gospel of Jesus Christ
- 2 Evangelization leadership (committee, minister, etc.)
- 3 Offering ministries to evangelize adults
- 4 Offering ministries for spiritual growth
- 5 Offering programs aimed at parish renewal
- 6 Prayers for healing and spiritual reconciliation
- 7 Reaching out to inactive Catholics
- 8 Reaching out to non-Catholics
- 9 Providing adult faith formation and catechesis
- 10 Strengthening religious education

# ST. MARK

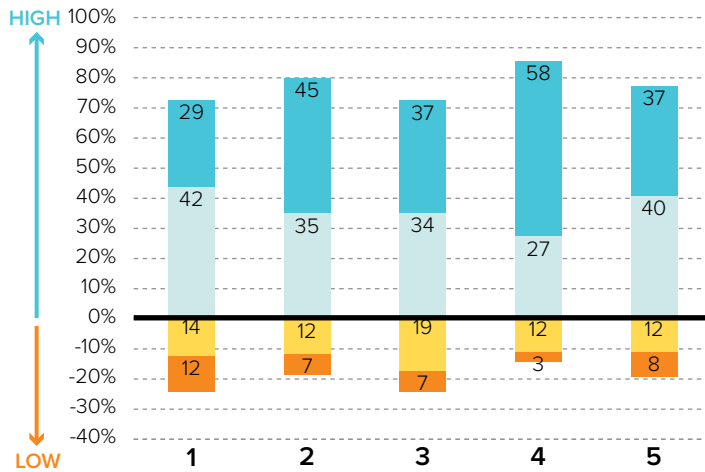
WARREN, MI / CENTRAL MACOMB VICARIATE / NORTHEAST REGION

## KEY

- % Excellent
- % Good
- % Fair
- % Poor

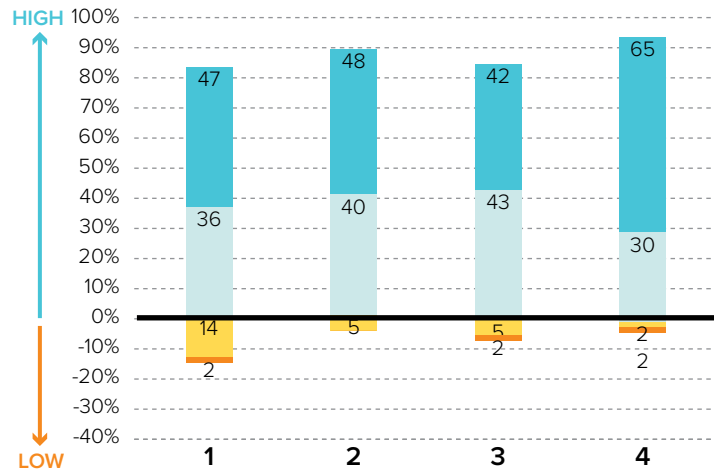
## Survey Results Part I: Mission Priorities

### PRIORITY AREA: LAY LEADERSHIP



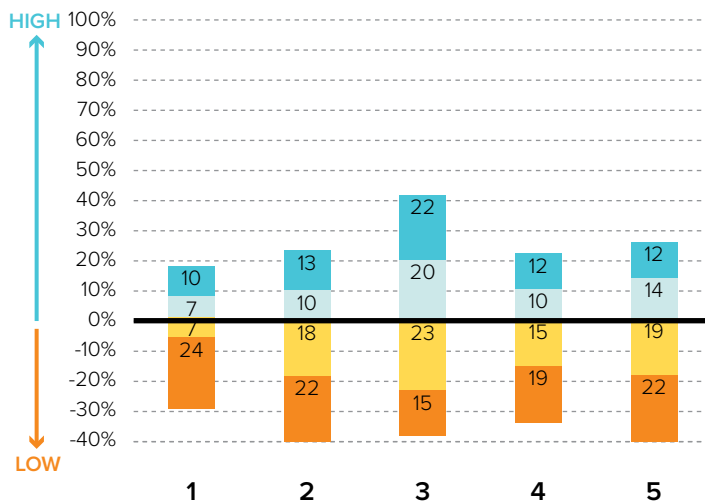
- 1 Training parishioners to identify their spiritual gifts
- 2 Increasing opportunities for lay involvement
- 3 Training and ministry for lay leaders
- 4 Encouraging parishioners to volunteer
- 5 Providing training opportunities for volunteers

### PRIORITY AREA: STEWARDSHIP AND ADMINISTRATION



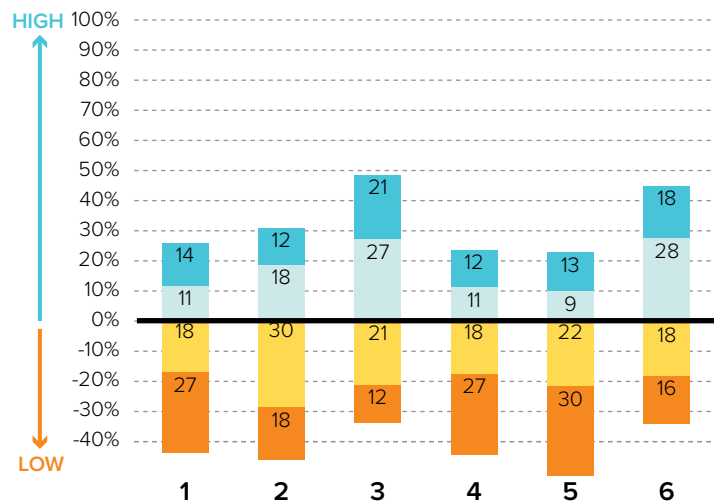
- 1 Communicating stewardship as a way of life
- 2 Forming an active Stewardship Commission
- 3 Supporting an active Finance Council
- 4 Financial transparency/accountability

### PRIORITY AREA: VOCATIONS



- 1 Forming a vocations committee
- 2 Promoting vocations to priesthood/religious life
- 3 Promoting prayer for vocations
- 4 Inviting young people to consider Church vocations
- 5 Teaching vocation awareness

### PRIORITY AREA: YOUTH AND YOUNG ADULTS



- 1 Providing regular meetings for teens
- 2 Providing special events for teens (e.g. retreats)
- 3 Engaging youth in parish life and liturgies
- 4 Providing regular meetings for young adults
- 5 Hosting special events for young adults
- 6 Engaging young adults in parish ministries and outreaches

# ST. MARK

WARREN, MI / CENTRAL MACOMB VICARIATE / NORTHEAST REGION

## Survey Results Part II: Faith and Parish Life

### YEARS AT CURRENT PARISH

How many years have you attended Mass at your current parish?

	Count	%
Less than 1 year	3	5.3%
1-5 years	11	19.3%
6-10 years	4	7.0%
11-20 years	6	10.5%
21-30 years	8	14.0%
31+ years	25	43.9%
Total	57	100.0%

### MASS ATTENDANCE

How often do you attend Mass?



### REASONS TO MISS MASS

If you do not attend Mass regularly on Sundays, how much does each of the following explain why? % "somewhat" or "very"

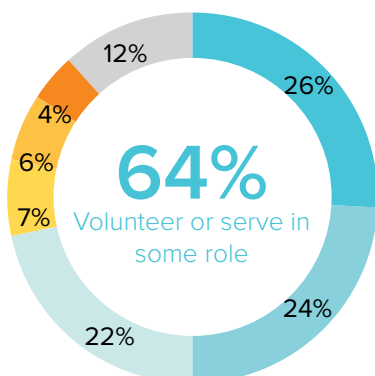
Health problems or a disability	28.0%
Family concerns and needs	19.2%
Clusters, mergers, and closures of parishes	8.7%
The parish is not welcoming	4.3%
Lack of children's ministries	4.0%
Demands of work, school, or sports	0.0%
The pastor is not welcoming	0.0%
Divorce or marriage outside of Church	0.0%
Masses are boring/irrelevant to me	0.0%

### REGISTRATION

Are you a registered member at your current parish?



### INVOLVEMENT IN THE PARISH



Do you serve, or have you ever served in any of the following roles in your parish?

#### KEY

- Liturgical ministries (e.g. usher, Eucharistic Minister, lector)
- Volunteer (e.g. catechist, Vacation Bible School)
- Member of a parish council, commission, or committee
- Music ministries (e.g. choir, musician, director)
- Parish support staff (e.g. secretary, maintenance)
- Parish staff (e.g. youth minister, business manager, DRE)
- None of the above

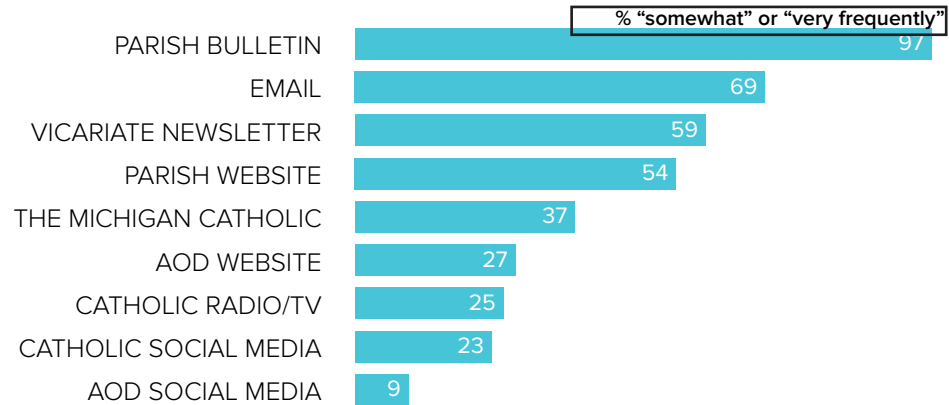
# ST. MARK

WARREN, MI / CENTRAL MACOMB VICARIATE / NORTHEAST REGION

## Survey Results Part II: Faith and Parish Life

### COMMUNICATION METHODS

How often do you rely on the following for information about your parish, the Archdiocese, or the Catholic Church?



### PARISH CHARACTERISTICS

How important to you are these characteristics in a parish?

	% "very important"		% "very important"
Quality worship service	89.5%	Devotions (rosary, adoration, etc.)	36.8%
Parish embraces Church teachings and values	69.0%	Contemporary music	29.8%
Daily and weekend Mass schedules	64.3%	Catholic school	23.6%
Parish social groups/gatherings	43.1%	Opportunities for penance/confession	21.1%
Service activities	43.1%	Mass in language(s) other than English	8.9%
Children's ministries (for all age groups)	41.8%		
Small group ministries (e.g. Bible Study)	37.9%		
Traditional music	36.8%		

### PASTOR CHARACTERISTICS

How important to you are these characteristics in a pastor?

	% "very important"
Welcoming spirit	91.2%
Engaging preaching style	89.7%
Ability to connect scripture to the present	86.2%
Invites people into a personal relationship w/ Jesus	82.8%
Values input from laity	75.9%
Manages parish resources effectively	74.1%
Communicates parish priorities	71.9%
Challenges people to live a life of discipleship	67.2%

### CHALLENGES FACING THE CHURCH

How would you rate the following as challenges facing the Catholic Church in Southeast Michigan today?

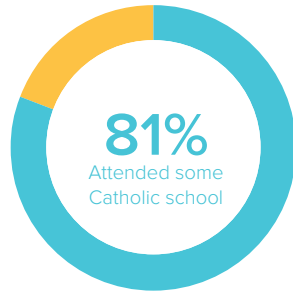
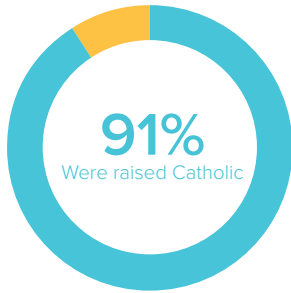
	% "serious challenge"
<b>TOP 5 RESPONSES</b>	
Shortage of priests/decline in vocations	82.8%
Clustering, merging, and closing of parishes	71.2%
Church funds/financial management	65.5%
Engaging teens and young adults in parish life	64.9%
Society in general is less religious	63.2%

# ST. MARK

WARREN, MI / CENTRAL MACOMB VICARIATE / NORTHEAST REGION

## Survey Results Part III: Demographics

### CATHOLIC BACKGROUND AND EDUCATION



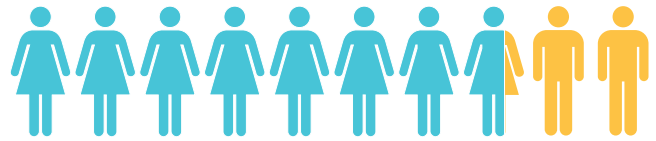
**KEY**

- Raised Catholic
- Converted to Catholicism
- Not Catholic

**KEY**

- Attended Catholic school
- Did not attend Catholic school

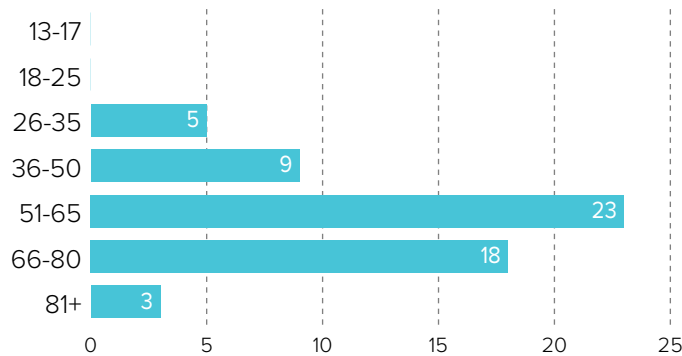
### GENDER



77% WOMEN

23% MEN

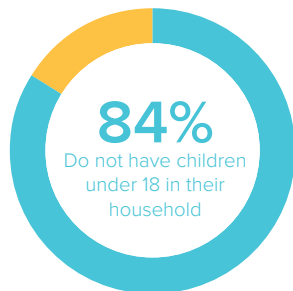
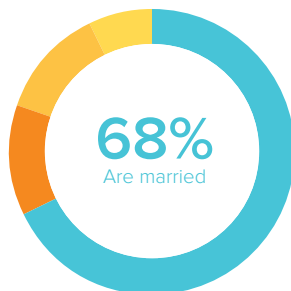
### AGE



### RACIAL OR ETHNIC BACKGROUND

	Count	%
White	54	94.5%
Black	0	0.0%
Hispanic	1	1.8%
Asian	0	0.0%
Native American	0	0.0%
Other	2	3.5%
<b>Total</b>	<b>57</b>	<b>100.0%</b>

### MARITAL STATUS AND CHILDREN IN HOUSEHOLD



**KEY**

- Married or remarried
- Single, never married
- Widowed
- Divorced or separated

**KEY**

- Do not have children
- Have children

### ESTIMATED HOUSEHOLD INCOME

	Count	%
\$19,000 or less	3	6.4%
\$20,000-39,999	9	19.1%
\$40,000-59,999	19	40.4%
\$60,000-79,999	4	8.5%
\$80,000-99,999	3	6.4%
\$100,000 +	9	19.1%
<b>Total</b>	<b>47</b>	<b>100.0%</b>