

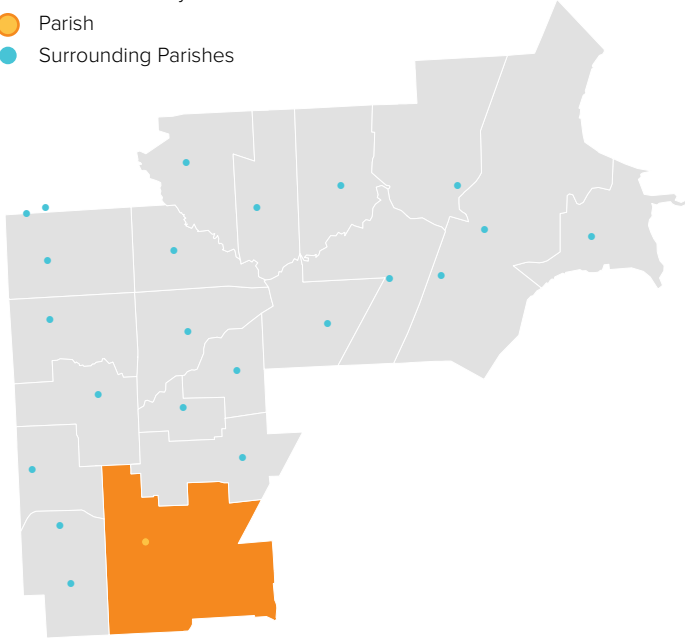
ST. MARY, OUR LADY QUEEN OF FAMILIES

WARREN, MI / CENTRAL MACOMB VICARIATE / NORTHEAST REGION

Parish Profile and Survey Results

KEY

- Parish Boundary
- Parish
- Surrounding Parishes



TOTAL SURVEY RESPONSES

Parish ID	Name	responses
575	St. Mary, Our Lady Queen of Families	49

PARISH LOCATION AND BOUNDARY - WITHIN VICARIATE

PARISH CATHOLIC POPULATION FACTS

	2000	2013	% Change
Total Registered Households	3,752	4,923	31.2%
Total Registered Individuals	11,256	13,784	22.5%
% of HH in Parish Boundary		56%	
% of HH Outside Parish Boundary		44%	

KEY U.S. CENSUS FACTS

	2000	2010	% Change
Total Households	19,720	18,447	-6.5%
Total Population	50,831	47,826	-5.9%
Median Household Income	\$39,159	\$34,162	-12.8%
Median Age	30.9	27.2	-12.0%

PARISH FINANCIAL STATS

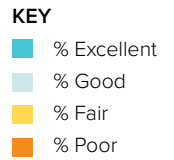
	08-09	12-13	% Change
Total Operating Income	\$1,116,870	\$1,077,844	-3.5%
Total Operating Expenses	\$991,027	\$1,500,498	51.4%
LDP Debt	\$1,888,280	\$2,419,625	28.1%
AOD & MCC Outstanding payables	N/A	\$1,027,902	N/A
Total Savings	\$72,834	\$422,961	480.7%

PARISH SACRAMENTAL STATS (5 YR. TREND)

	2008	2013	% Change
Baptisms	44	10	-77.3%
First Communion	41	23	-43.9%
Confirmations	60	20	-66.7%
Total Marriages	10	0	-100.0%
Funerals	128	58	-54.7%

ST. MARY, OUR LADY QUEEN OF FAMILIES

WARREN, MI / CENTRAL MACOMB VICARIATE / NORTHEAST REGION

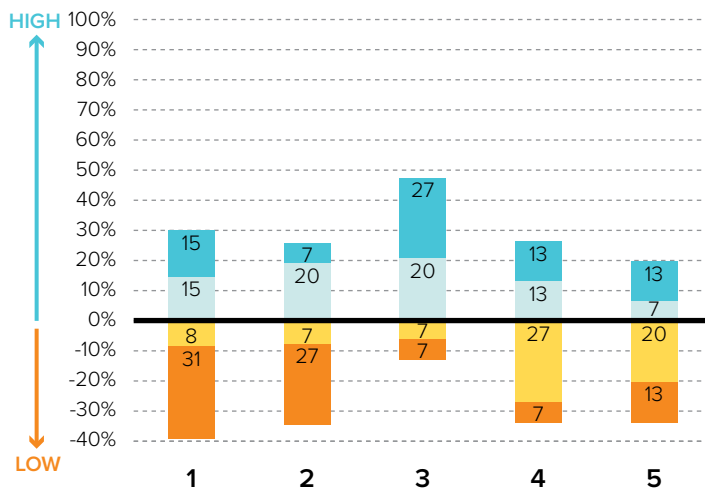


Survey Results Part I: Mission Priorities

The following graphs show how parishioners rated each of the objectives associated with a mission priority area. The graphs are split between positive values for high ratings (“good” or “excellent”) and negative values for lower ratings (“fair” or “poor”). “Don’t know” responses are not shown in the graphs at right to more easily show the split between high and low ratings.

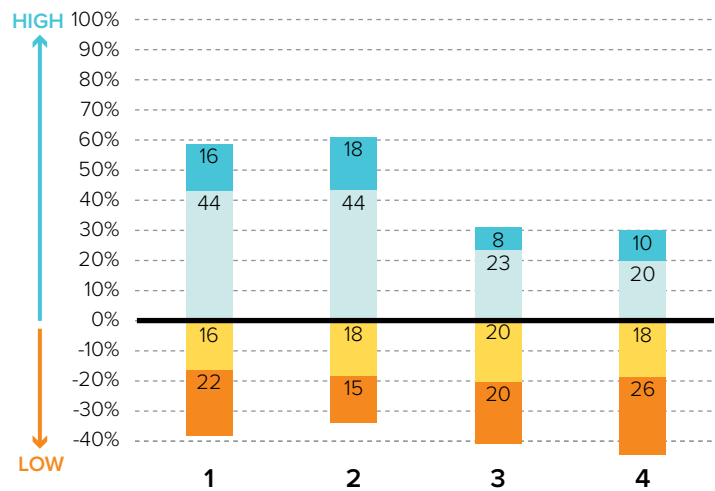
To the best of your ability, please evaluate how well your parish is doing in each of these areas.

PRIORITY AREA: CATHOLIC SCHOOLS



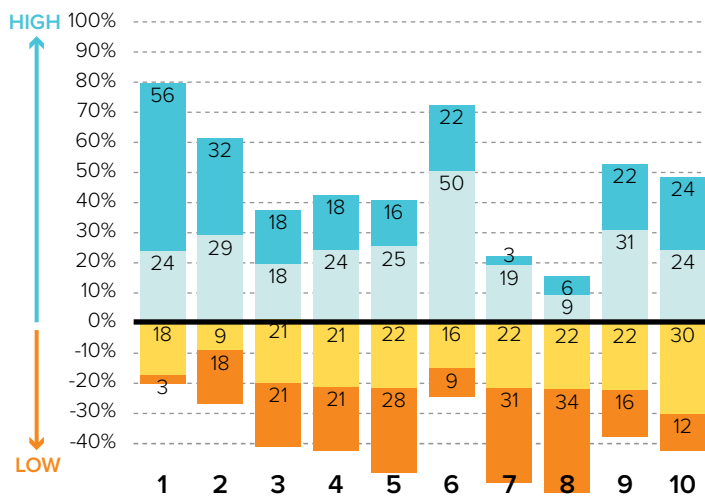
- 1 Ensuring a Catholic education is financially viable
- 2 Keeping tuition affordable to all Catholics
- 3 Maintaining a Catholic identity
- 4 Using technology effectively
- 5 Ensuring academic success and Catholic formation

PRIORITY AREA: CHRISTIAN SERVICE AND OUTREACH



- 1 Christian service projects for the parish community
- 2 Christian service projects for youth and young adults
- 3 Building interfaith relationships
- 4 Collaborating with other community organizations

EVANGELIZATION AND CATECHESIS



- 1 Explicitly proclaiming the Gospel of Jesus Christ
- 2 Evangelization leadership (committee, minister, etc.)
- 3 Offering ministries to evangelize adults
- 4 Offering ministries for spiritual growth
- 5 Offering programs aimed at parish renewal
- 6 Prayers for healing and spiritual reconciliation
- 7 Reaching out to inactive Catholics
- 8 Reaching out to non-Catholics
- 9 Providing adult faith formation and catechesis
- 10 Strengthening religious education

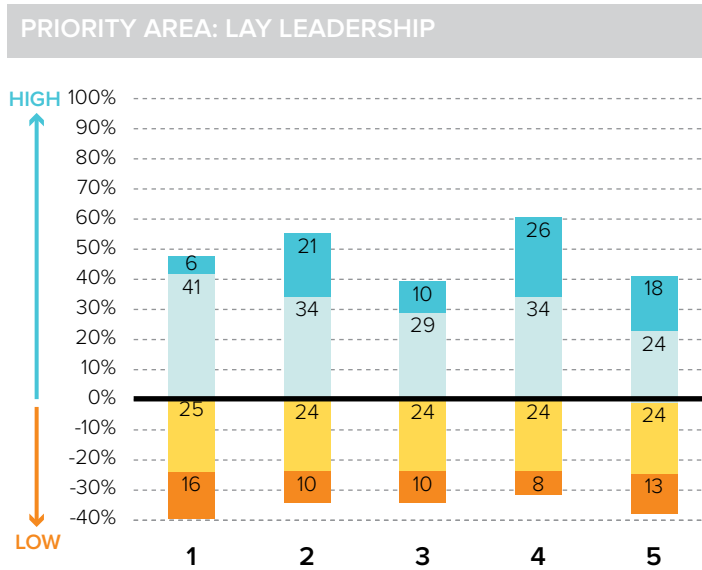
ST. MARY, OUR LADY QUEEN OF FAMILIES

WARREN, MI / CENTRAL MACOMB VICARIATE / NORTHEAST REGION

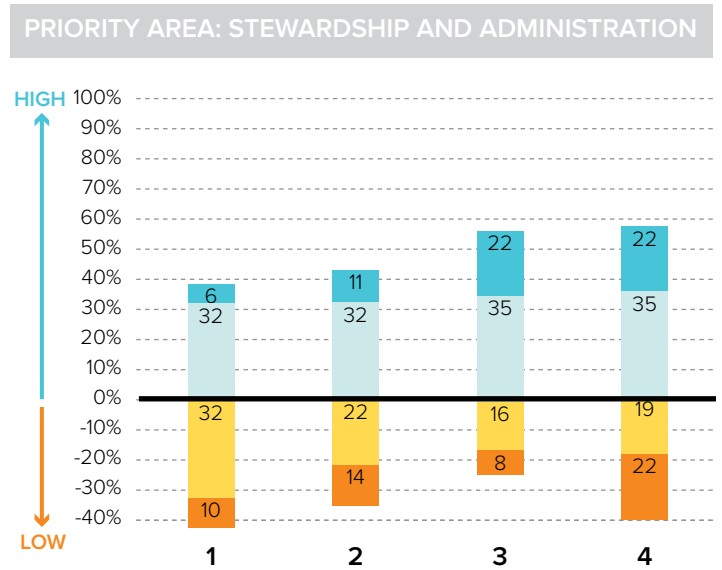
KEY

- % Excellent
- % Good
- % Fair
- % Poor

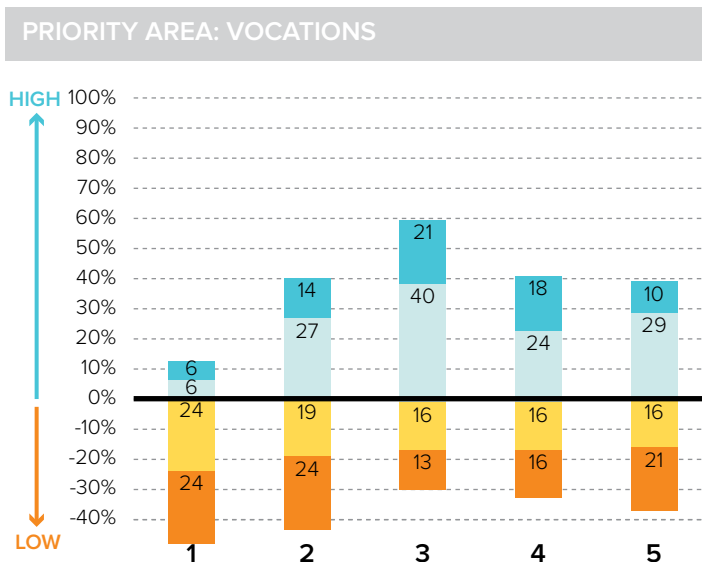
Survey Results Part I: Mission Priorities



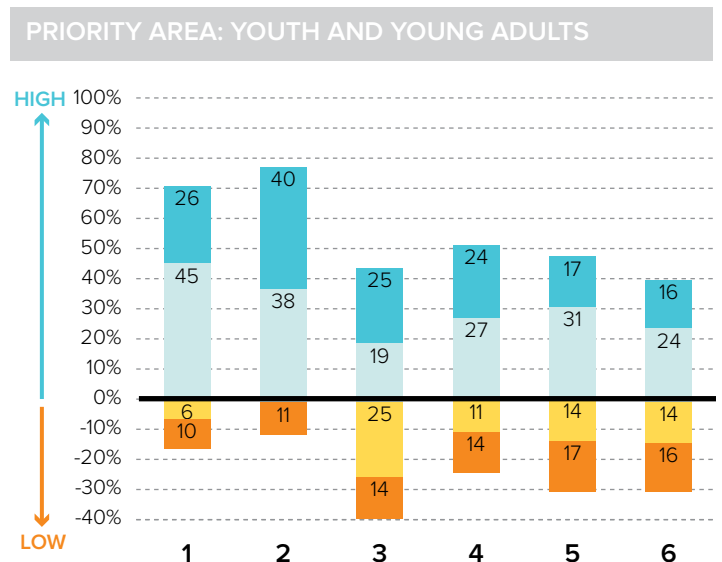
- 1 Training parishioners to identify their spiritual gifts
- 2 Increasing opportunities for lay involvement
- 3 Training and ministry for lay leaders
- 4 Encouraging parishioners to volunteer
- 5 Providing training opportunities for volunteers



- 1 Communicating stewardship as a way of life
- 2 Forming an active Stewardship Commission
- 3 Supporting an active Finance Council
- 4 Financial transparency/accountability



- 1 Forming a vocations committee
- 2 Promoting vocations to priesthood/religious life
- 3 Promoting prayer for vocations
- 4 Inviting young people to consider Church vocations
- 5 Teaching vocation awareness



- 1 Providing regular meetings for teens
- 2 Providing special events for teens (e.g. retreats)
- 3 Engaging youth in parish life and liturgies
- 4 Providing regular meetings for young adults
- 5 Hosting special events for young adults
- 6 Engaging young adults in parish ministries and outreaches

ST. MARY, OUR LADY QUEEN OF FAMILIES

WARREN, MI / CENTRAL MACOMB VICARIATE / NORTHEAST REGION

Survey Results Part II: Faith and Parish Life

YEARS AT CURRENT PARISH

How many years have you attended Mass at your current parish?

	Count	%
Less than 1 year	1	2.9%
1-5 years	4	11.8%
6-10 years	4	11.8%
11-20 years	4	11.8%
21-30 years	8	23.5%
31+ years	13	38.2%
Total	34	100.0%

MASS ATTENDANCE

How often do you attend Mass?



REASONS TO MISS MASS

If you do not attend Mass regularly on Sundays, how much does each of the following explain why? % "somewhat" or "very"

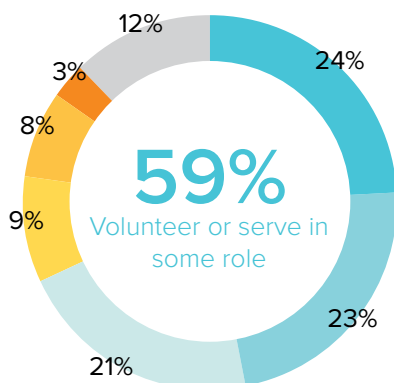
The parish is not welcoming	15.4%
Clusters, mergers, and closures of parishes	15.4%
Masses are boring/irrelevant to me	15.4%
Demands of work, school, or sports	14.3%
The pastor is not welcoming	7.7%
Family concerns and needs	7.7%
Lack of children's ministries	7.7%
Health problems or a disability	7.1%
Divorce or marriage outside of Church	0.0%

REGISTRATION

Are you a registered member at your current parish?



INVOLVEMENT IN THE PARISH



Do you serve, or have you ever served in any of the following roles in your parish?

KEY

- Liturgical ministries (e.g. usher, Eucharistic Minister, lector)
- Volunteer (e.g. catechist, Vacation Bible School)
- Member of a parish council, commission, or committee
- Music ministries (e.g. choir, musician, director)
- Parish staff (e.g. youth minister, business manager, DRE)
- Parish support staff (e.g. secretary, maintenance)
- None of the above

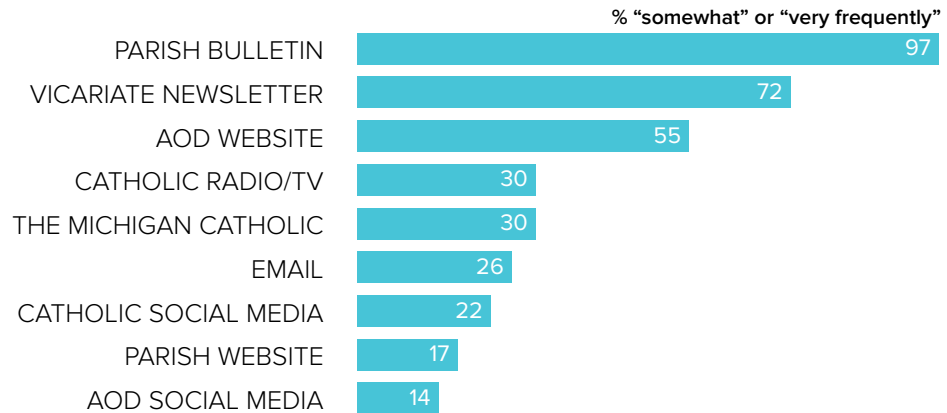
ST. MARY, OUR LADY QUEEN OF FAMILIES

WARREN, MI / CENTRAL MACOMB VICARIATE / NORTHEAST REGION

Survey Results Part II: Faith and Parish Life

COMMUNICATION METHODS

How often do you rely on the following for information about your parish, the Archdiocese, or the Catholic Church?



PARISH CHARACTERISTICS

How important to you are these characteristics in a parish?

	% "very important"		% "very important"
Quality worship service	93.8%	Parish social groups/gatherings	42.1%
Parish embraces Church teachings and values	73.7%	Traditional music	39.5%
Daily and weekend Mass schedules	66.7%	Small group ministries (e.g. Bible Study)	39.5%
Children's ministries (for all age groups)	59.5%	Contemporary music	23.7%
Catholic school	59.5%	Mass in language(s) other than English	10.5%
Opportunities for penance/confession	55.3%		
Service activities	47.4%		
Devotions (rosary, adoration, etc.)	45.9%		

PASTOR CHARACTERISTICS

How important to you are these characteristics in a pastor?

	% "very important"
Ability to connect scripture to the present	92.1%
Manages parish resources effectively	91.7%
Welcoming spirit	90.6%
Engaging preaching style	89.5%
Invites people into a personal relationship w/ Jesus	83.8%
Communicates parish priorities	81.1%
Values input from laity	76.3%
Challenges people to live a life of discipleship	73.7%

CHALLENGES FACING THE CHURCH

How would you rate the following as challenges facing the Catholic Church in Southeast Michigan today?

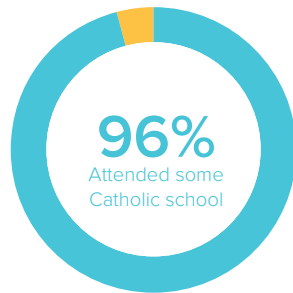
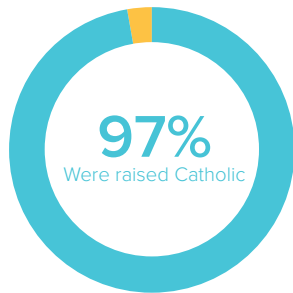
	% "serious challenge"
TOP 5 RESPONSES	
Shortage of priests/decline in vocations	86.7%
Society in general is less religious	77.8%
Church funds/financial management	75.0%
Clustering, merging, and closing of parishes	72.2%
Engaging teens and young adults in parish life	72.2%

ST. MARY, OUR LADY QUEEN OF FAMILIES

WARREN, MI / CENTRAL MACOMB VICARIATE / NORTHEAST REGION

Survey Results Part III: Demographics

CATHOLIC BACKGROUND AND EDUCATION



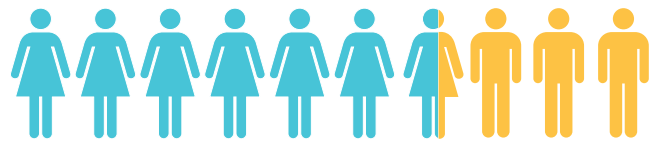
KEY

- Raised Catholic
- Converted to Catholicism
- Not Catholic

KEY

- Attended Catholic school
- Did not attend Catholic school

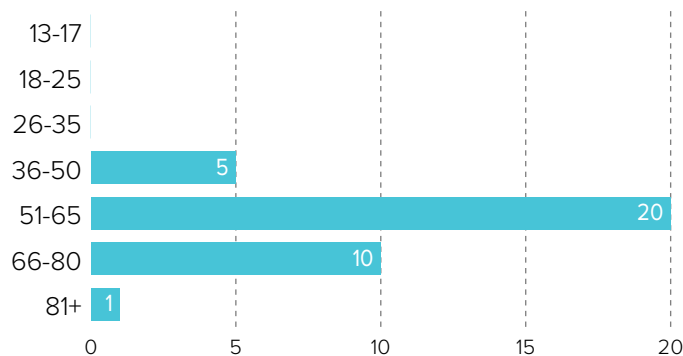
GENDER



66% WOMEN

34% MEN

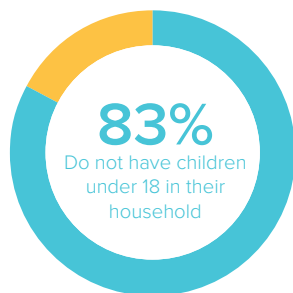
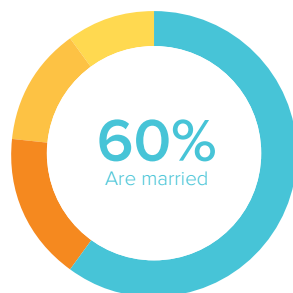
AGE



RACIAL OR ETHNIC BACKGROUND

	Count	%
White	37	100%
Black	0	0.0%
Hispanic	0	0.0%
Asian	0	0.0%
Native American	0	0.0%
Other	0	0.0%
Total	37	100.0%

MARITAL STATUS AND CHILDREN IN HOUSEHOLD



KEY

- Married or remarried
- Single, never married
- Widowed
- Divorced or separated

KEY

- Do not have children
- Have children

ESTIMATED HOUSEHOLD INCOME

	Count	%
\$19,000 or less	1	3.6%
\$20,000-39,999	4	14.3%
\$40,000-59,999	10	35.7%
\$60,000-79,999	7	25.0%
\$80,000-99,999	3	10.7%
\$100,000 +	3	10.7%
Total	28	100.0%