

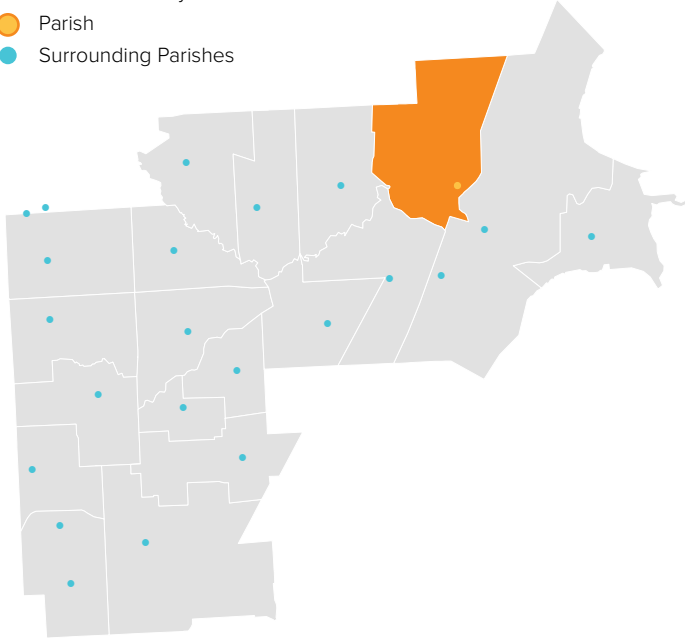
ST. PETER

MOUNT CLEMENS, MI / CENTRAL MACOMB VICARIATE / NORTHEAST REGION

Parish Profile and Survey Results

KEY

- Parish Boundary
- Parish
- Surrounding Parishes



TOTAL SURVEY RESPONSES

| Parish ID | Name | responses |
|-----------|-----------|-----------|
| 710 | St. Peter | 296 |

PARISH LOCATION AND BOUNDARY - WITHIN VICARIATE

PARISH CATHOLIC POPULATION FACTS

| | 2000 | 2013 | % Change |
|---------------------------------|-------|--------|----------|
| Total Registered Households | 2,238 | 3,659 | 63.5% |
| Total Registered Individuals | 6,714 | 10,245 | 52.6% |
| % of HH in Parish Boundary | | 18% | |
| % of HH Outside Parish Boundary | | 82% | |

KEY U.S. CENSUS FACTS

| | 2000 | 2010 | % Change |
|-------------------------|----------|----------|----------|
| Total Households | 8,524 | 8,457 | -0.8% |
| Total Population | 22,121 | 23,375 | 5.7% |
| Median Household Income | \$43,768 | \$41,376 | -5.5% |
| Median Age | 29.8 | 27.5 | -7.8% |

PARISH FINANCIAL STATS

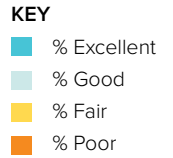
| | 2009 | 2013 | % Change |
|--------------------------|-------------|-------------|----------|
| Total Operating Income | \$1,783,114 | \$1,780,729 | -0.1% |
| Total Operating Expenses | \$1,949,261 | \$1,763,159 | -9.5% |
| LDP Debt | \$- | \$- | 0.0% |
| AOD & MCC | N/A | \$23,136 | N/A |
| Outstanding payables | | | |
| Total Savings | \$1,115,944 | \$1,514,566 | 35.7% |

PARISH SACRAMENTAL STATS (5 YR. TREND)

| | 2009 | 2013 | % Change |
|-----------------|------|------|----------|
| Baptisms | 117 | 95 | -18.8% |
| First Communion | 159 | 91 | -42.8% |
| Confirmations | 114 | 118 | 3.5% |
| Total Marriages | 48 | 35 | -27.1% |
| Funerals | 126 | 130 | 3.2% |

ST. PETER

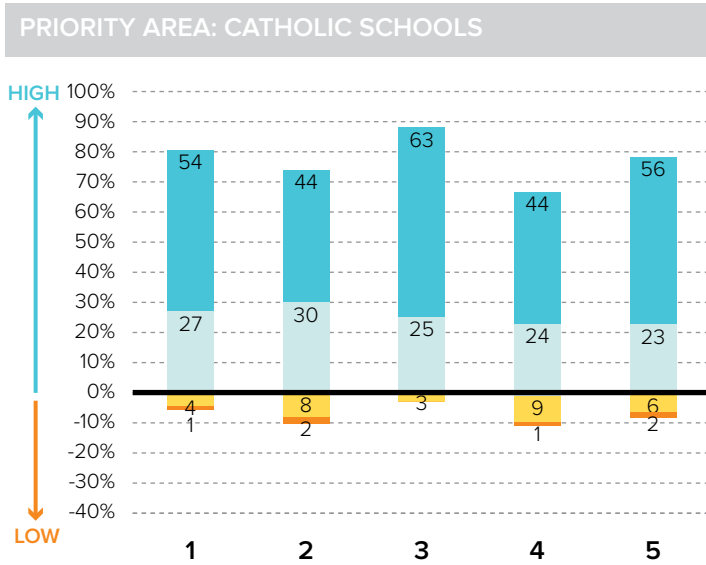
MOUNT CLEMENS, MI / CENTRAL MACOMB VICARIATE / NORTHEAST REGION



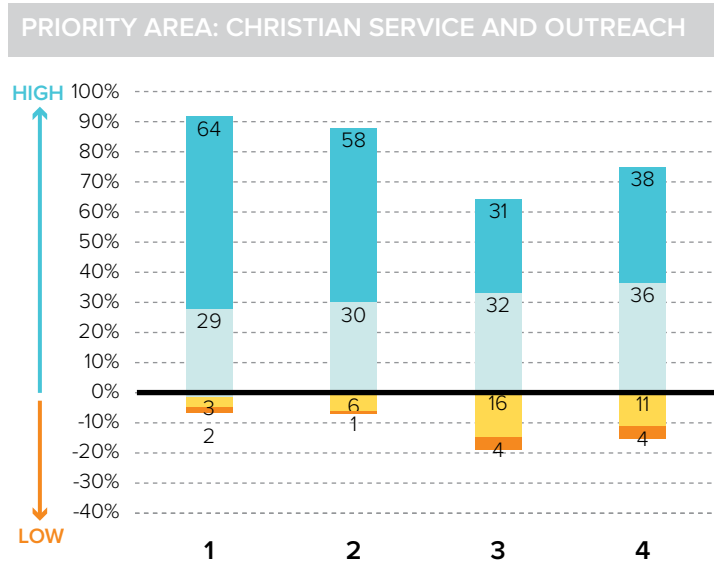
Survey Results Part I: Mission Priorities

The following graphs show how parishioners rated each of the objectives associated with a mission priority area. The graphs are split between positive values for high ratings (“good” or “excellent”) and negative values for lower ratings (“fair” or “poor”). “Don’t know” responses are not shown in the graphs at right to more easily show the split between high and low ratings.

To the best of your ability, please evaluate how well your parish is doing in each of these areas.

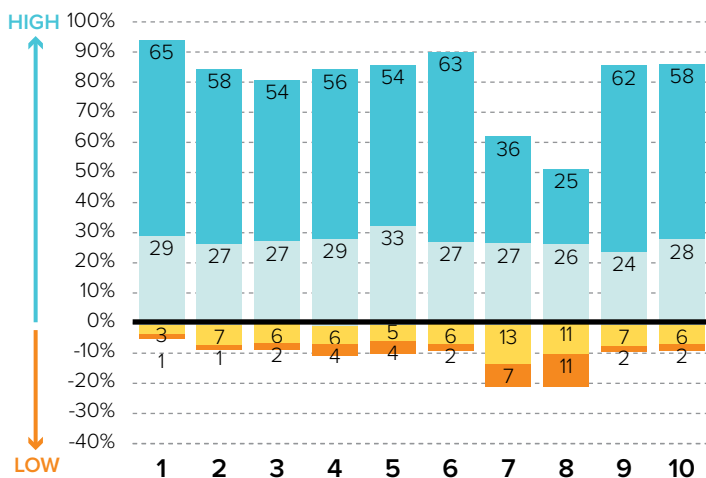


- 1 Ensuring a Catholic education is financially viable
- 2 Keeping tuition affordable to all Catholics
- 3 Maintaining a Catholic identity
- 4 Using technology effectively
- 5 Ensuring academic success and Catholic formation



- 1 Christian service projects for the parish community
- 2 Christian service projects for youth and young adults
- 3 Building interfaith relationships
- 4 Collaborating with other community organizations

EVANGELIZATION AND CATECHESIS



- 1 Explicitly proclaiming the Gospel of Jesus Christ
- 2 Evangelization leadership (committee, minister, etc.)
- 3 Offering ministries to evangelize adults
- 4 Offering ministries for spiritual growth
- 5 Offering programs aimed at parish renewal
- 6 Prayers for healing and spiritual reconciliation
- 7 Reaching out to inactive Catholics
- 8 Reaching out to non-Catholics
- 9 Providing adult faith formation and catechesis
- 10 Strengthening religious education

ST. PETER

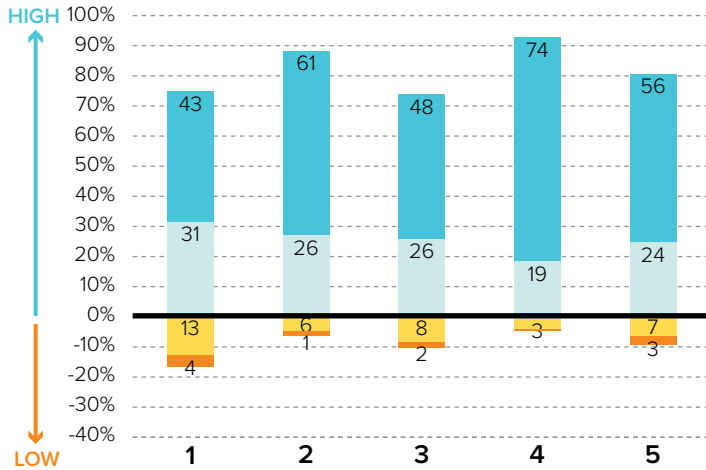
MOUNT CLEMENS, MI / CENTRAL MACOMB VICARIATE / NORTHEAST REGION

KEY

- % Excellent
- % Good
- % Fair
- % Poor

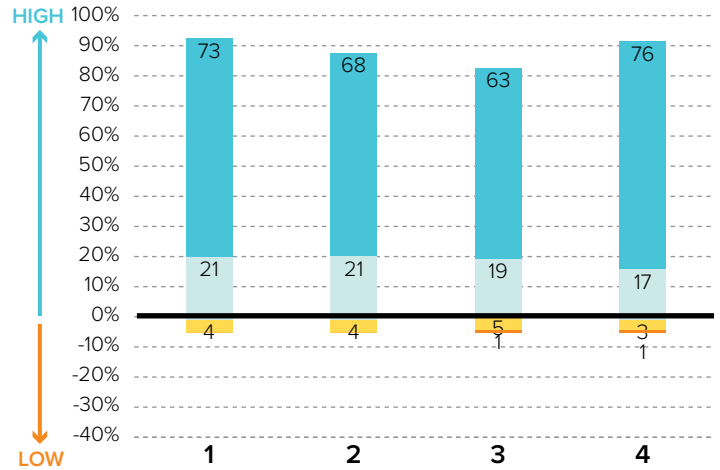
Survey Results Part I: Mission Priorities

PRIORITY AREA: LAY LEADERSHIP



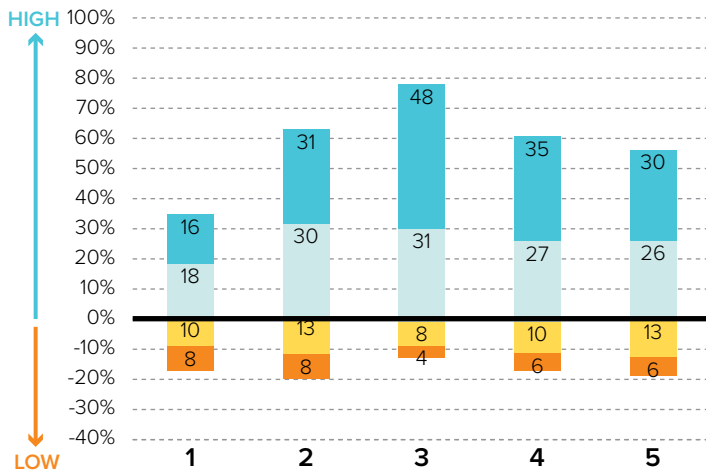
- 1 Training parishioners to identify their spiritual gifts
- 2 Increasing opportunities for lay involvement
- 3 Training and ministry for lay leaders
- 4 Encouraging parishioners to volunteer
- 5 Providing training opportunities for volunteers

PRIORITY AREA: STEWARDSHIP AND ADMINISTRATION



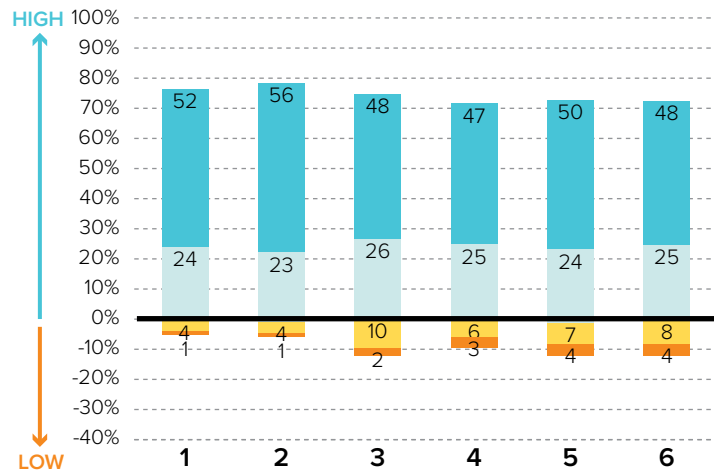
- 1 Communicating stewardship as a way of life
- 2 Forming an active Stewardship Commission
- 3 Supporting an active Finance Council
- 4 Financial transparency/accountability

PRIORITY AREA: VOCATIONS



- 1 Forming a vocations committee
- 2 Promoting vocations to priesthood/religious life
- 3 Promoting prayer for vocations
- 4 Inviting young people to consider Church vocations
- 5 Teaching vocation awareness

PRIORITY AREA: YOUTH AND YOUNG ADULTS



- 1 Providing regular meetings for teens
- 2 Providing special events for teens (e.g. retreats)
- 3 Engaging youth in parish life and liturgies
- 4 Providing regular meetings for young adults
- 5 Hosting special events for young adults
- 6 Engaging young adults in parish ministries and outreaches

ST. PETER

MOUNT CLEMENS, MI / CENTRAL MACOMB VICARIATE / NORTHEAST REGION

Survey Results Part II: Faith and Parish Life

YEARS AT CURRENT PARISH

How many years have you attended Mass at your current parish?

| | Count | % |
|------------------|-------|--------|
| Less than 1 year | 2 | 1.0% |
| 1-5 years | 23 | 11.2% |
| 6-10 years | 51 | 24.8% |
| 11-20 years | 50 | 24.3% |
| 21-30 years | 43 | 20.9% |
| 31+ years | 37 | 18.0% |
| Total | 206 | 100.0% |

MASS ATTENDANCE

How often do you attend Mass?



REASONS TO MISS MASS

If you do not attend Mass regularly on Sundays, how much does each of the following explain why? % "somewhat" or "very"

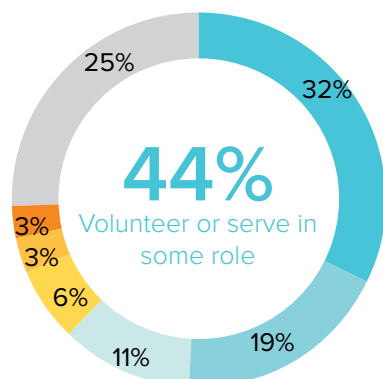
| | |
|---|-------|
| Demands of work, school, or sports | 30.7% |
| Family concerns and needs | 24.3% |
| Health problems or a disability | 11.2% |
| Masses are boring/irrelevant to me | 8.0% |
| The pastor is not welcoming | 7.3% |
| Divorce or marriage outside of Church | 5.4% |
| Lack of children's ministries | 4.5% |
| The parish is not welcoming | 3.6% |
| Clusters, mergers, and closures of parishes | 1.8% |

REGISTRATION

Are you a registered member at your current parish?



INVOLVEMENT IN THE PARISH



Do you serve, or have you ever served in any of the following roles in your parish?

KEY

- Volunteer (e.g. catechist, Vacation Bible School)
- Liturgical ministries (e.g. usher, Eucharistic Minister, lector)
- Member of a parish council, commission, or committee
- Music ministries (e.g. choir, musician, director)
- Parish support staff (e.g. secretary, maintenance)
- Parish staff (e.g. youth minister, business manager, DRE)
- None of the above

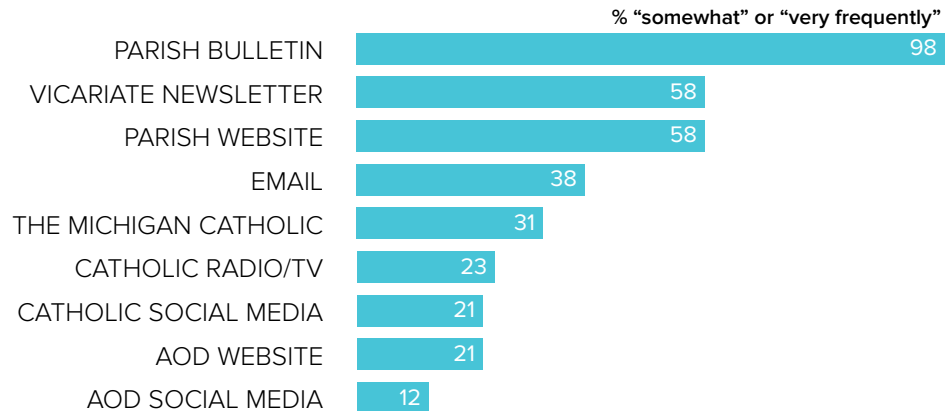
ST. PETER

MOUNT CLEMENS, MI / CENTRAL MACOMB VICARIATE / NORTHEAST REGION

Survey Results Part II: Faith and Parish Life

COMMUNICATION METHODS

How often do you rely on the following for information about your parish, the Archdiocese, or the Catholic Church?



PARISH CHARACTERISTICS

How important to you are these characteristics in a parish?

| | % "very important" | | % "very important" |
|---|--------------------|---|--------------------|
| Quality worship service | 90.8% | Service activities | 41.4% |
| Parish embraces Church teachings and values | 80.0% | Traditional music | 35.8% |
| Daily and weekend Mass schedules | 76.7% | Small group ministries (e.g. Bible Study) | 34.3% |
| Catholic school | 65.5% | Contemporary music | 16.6% |
| Devotions (rosary, adoration, etc.) | 51.2% | Mass in language(s) other than English | 2.0% |
| Children's ministries (for all age groups) | 50.7% | | |
| Opportunities for penance/confession | 43.7% | | |
| Parish social groups/gatherings | 42.9% | | |

PASTOR CHARACTERISTICS

How important to you are these characteristics in a pastor?

| | % "very important" |
|--|--------------------|
| Welcoming spirit | 95.7% |
| Ability to connect scripture to the present | 93.2% |
| Engaging preaching style | 90.3% |
| Invites people into a personal relationship w/ Jesus | 87.9% |
| Manages parish resources effectively | 87.9% |
| Communicates parish priorities | 81.6% |
| Challenges people to live a life of discipleship | 72.8% |
| Values input from laity | 72.3% |

CHALLENGES FACING THE CHURCH

How would you rate the following as challenges facing the Catholic Church in Southeast Michigan today?

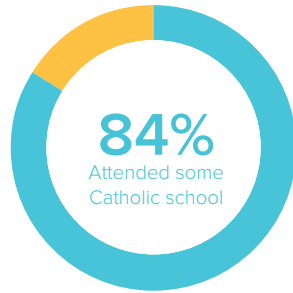
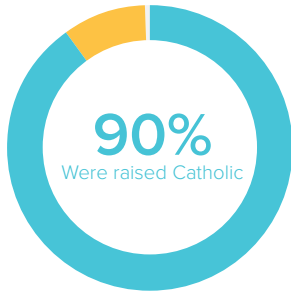
| | % "serious challenge" |
|--|-----------------------|
| TOP 5 RESPONSES | |
| Shortage of priests/decline in vocations | 82.9% |
| Engaging teens and young adults in parish life | 58.6% |
| Society in general is less religious | 58.0% |
| Church funds/financial management | 52.5% |
| Lack of participation in the sacraments | 49.0% |

ST. PETER

MOUNT CLEMENS, MI / CENTRAL MACOMB VICARIATE / NORTHEAST REGION

Survey Results Part III: Demographics

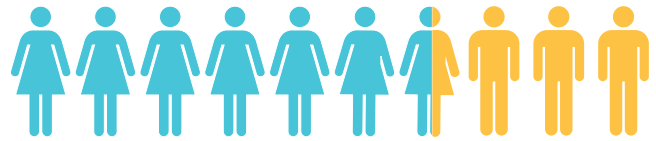
CATHOLIC BACKGROUND AND EDUCATION



- KEY**
- Raised Catholic
 - Converted to Catholicism
 - Not Catholic

- KEY**
- Attended Catholic school
 - Did not attend Catholic school

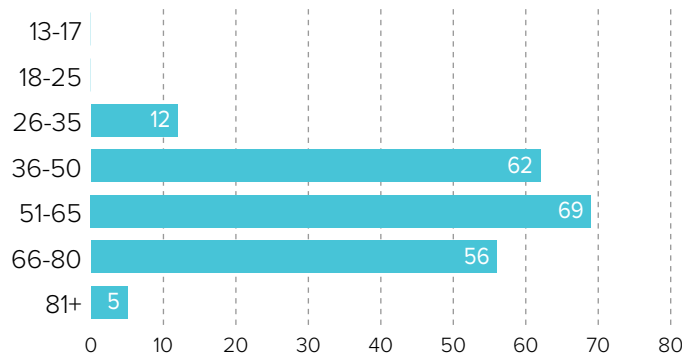
GENDER



66% WOMEN

34% MEN

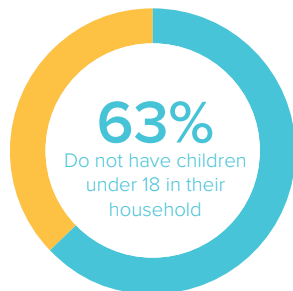
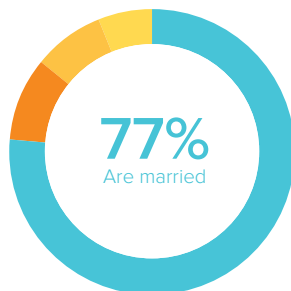
AGE



RACIAL OR ETHNIC BACKGROUND

| | Count | % |
|-----------------|------------|---------------|
| White | 193 | 97.0% |
| Black | 1 | .5% |
| Hispanic | 3 | 1.5% |
| Asian | 2 | 1.0% |
| Native American | 0 | 0.0% |
| Other | 0 | 0.0% |
| Total | 199 | 100.0% |

MARITAL STATUS AND CHILDREN IN HOUSEHOLD



- KEY**
- Married or remarried
 - Divorced or separated
 - Widowed
 - Single, never married

- KEY**
- Do not have children
 - Have children

ESTIMATED HOUSEHOLD INCOME

| | Count | % |
|------------------|------------|---------------|
| \$19,000 or less | 8 | 4.4% |
| \$20,000-39,999 | 21 | 11.5% |
| \$40,000-59,999 | 33 | 18.1% |
| \$60,000-79,999 | 34 | 18.7% |
| \$80,000-99,999 | 28 | 15.4% |
| \$100,000 + | 58 | 31.9% |
| Total | 182 | 100.0% |