

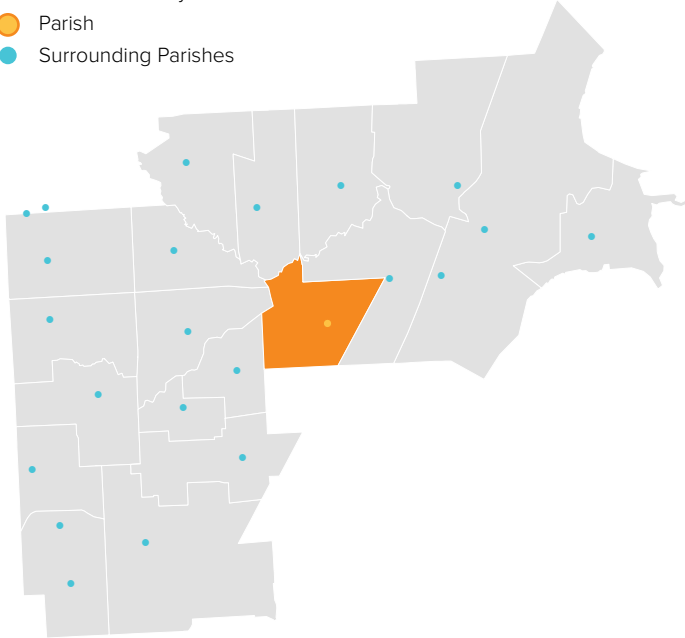
ST. RONALD

CLINTON TOWNSHIP, MI / CENTRAL MACOMB VICARIATE / NORTHEAST REGION

Parish Profile and Survey Results

KEY

- Parish Boundary
- Parish
- Surrounding Parishes



TOTAL SURVEY RESPONSES

Parish ID	Name	responses
749	St. Ronald	190

PARISH LOCATION AND BOUNDARY - WITHIN VICARIATE

PARISH CATHOLIC POPULATION FACTS

	2000	2013	% Change
Total Registered Households	895	1,418	58.4%
Total Registered Individuals	2,685	3,970	47.9%
% of HH in Parish Boundary		56%	
% of HH Outside Parish Boundary		44%	

KEY U.S. CENSUS FACTS

	2000	2010	% Change
Total Households	6,275	6,314	0.6%
Total Population	15,597	15,564	-0.2%
Median Household Income	\$49,025	\$49,875	1.7%
Median Age	35.2	35.3	0.4%

PARISH FINANCIAL STATS

	2009	2013	% Change
Total Operating Income	\$551,329	\$551,211	0.0%
Total Operating Expenses	\$503,814	\$557,922	10.7%
LDP Debt	\$-	\$-	0.0%
AOD & MCC	N/A	\$17,618	N/A
Outstanding payables			
Total Savings	\$244,726	\$167,298	-31.6%

PARISH SACRAMENTAL STATS (5 YR. TREND)

	2009	2013	% Change
Baptisms	54	33	-38.9%
First Communion	45	45	0.0%
Confirmations	11	56	409.1%
Total Marriages	13	11	-15.4%
Funerals	86	49	-43.0%

ST. RONALD

CLINTON TOWNSHIP, MI / CENTRAL MACOMB VICARIATE / NORTHEAST REGION

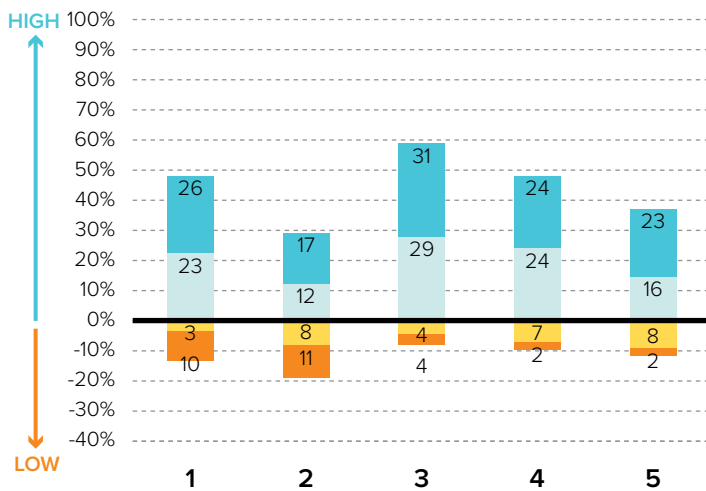
KEY
 % Excellent
 % Good
 % Fair
 % Poor

Survey Results Part I: Mission Priorities

The following graphs show how parishioners rated each of the objectives associated with a mission priority area. The graphs are split between positive values for high ratings (“good” or “excellent”) and negative values for lower ratings (“fair” or “poor”). “Don’t know” responses are not shown in the graphs at right to more easily show the split between high and low ratings.

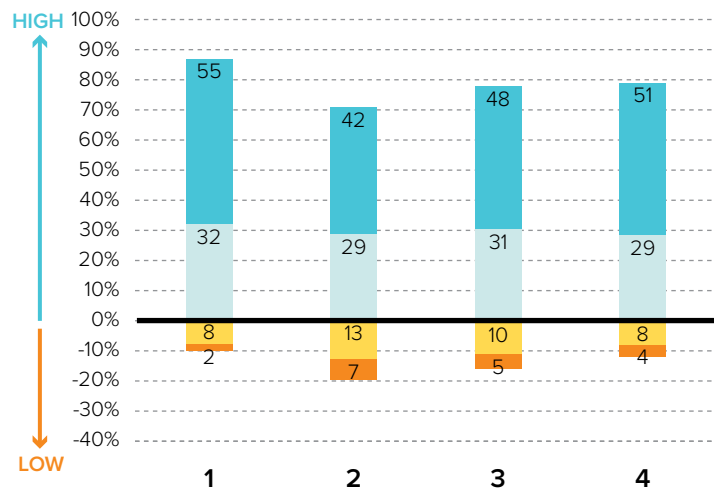
To the best of your ability, please evaluate how well your parish is doing in each of these areas.

PRIORITY AREA: CATHOLIC SCHOOLS



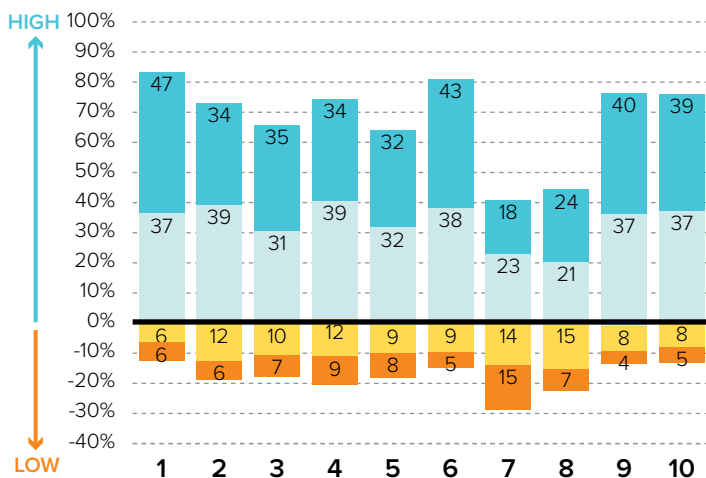
- 1 Ensuring a Catholic education is financially viable
- 2 Keeping tuition affordable to all Catholics
- 3 Maintaining a Catholic identity
- 4 Using technology effectively
- 5 Ensuring academic success and Catholic formation

PRIORITY AREA: CHRISTIAN SERVICE AND OUTREACH



- 1 Christian service projects for the parish community
- 2 Christian service projects for youth and young adults
- 3 Building interfaith relationships
- 4 Collaborating with other community organizations

EVANGELIZATION AND CATECHESIS



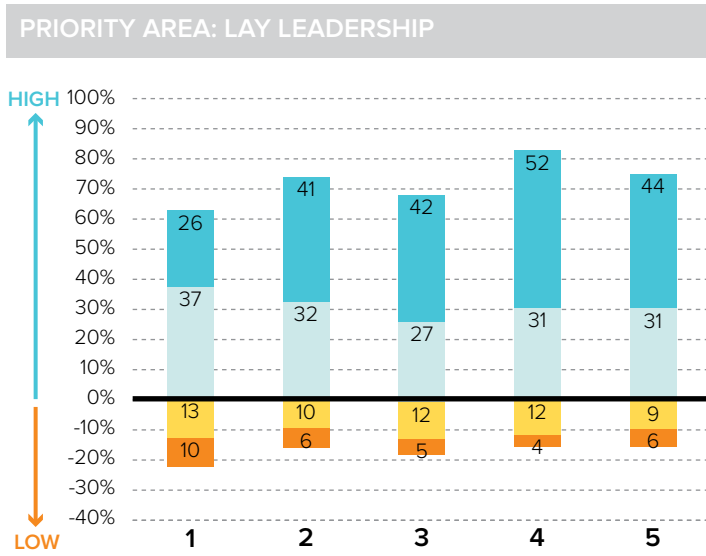
- 1 Explicitly proclaiming the Gospel of Jesus Christ
- 2 Evangelization leadership (committee, minister, etc.)
- 3 Offering ministries to evangelize adults
- 4 Offering ministries for spiritual growth
- 5 Offering programs aimed at parish renewal
- 6 Prayers for healing and spiritual reconciliation
- 7 Reaching out to inactive Catholics
- 8 Reaching out to non-Catholics
- 9 Providing adult faith formation and catechesis
- 10 Strengthening religious education

ST. RONALD

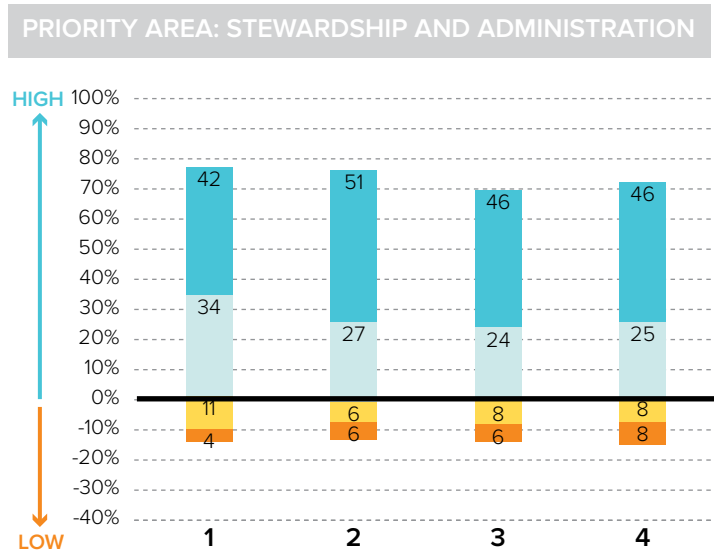
CLINTON TOWNSHIP, MI / CENTRAL MACOMB VICARIATE / NORTHEAST REGION

KEY
■ % Excellent
■ % Good
■ % Fair
■ % Poor

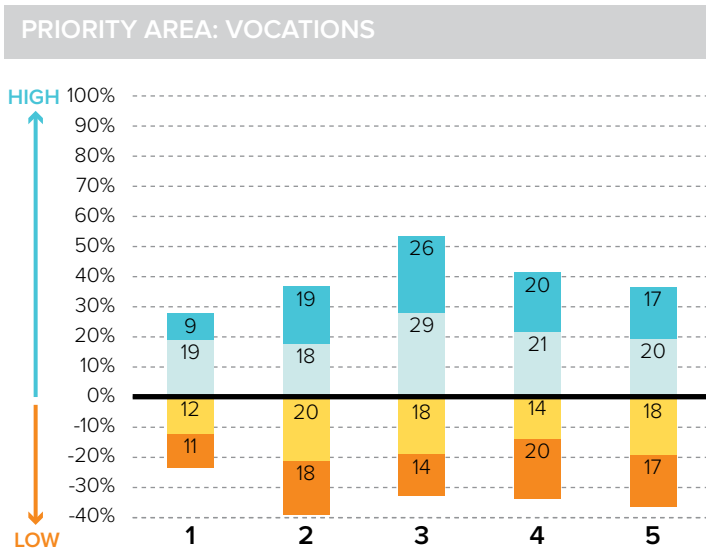
Survey Results Part I: Mission Priorities



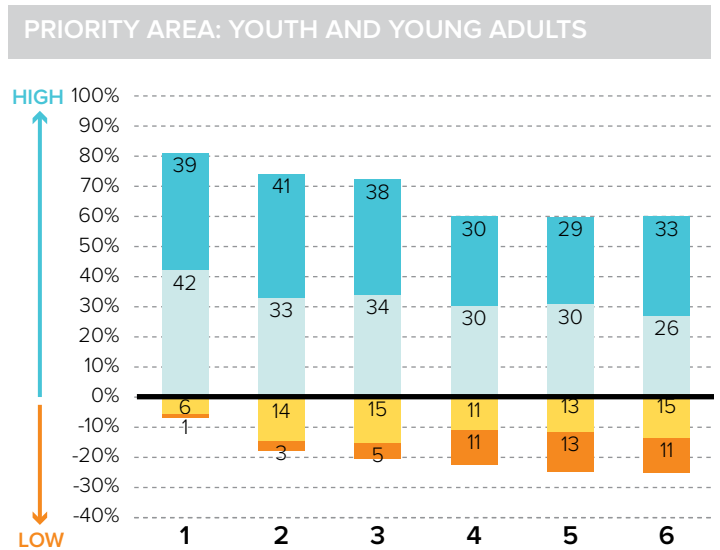
- 1 Training parishioners to identify their spiritual gifts
- 2 Increasing opportunities for lay involvement
- 3 Training and ministry for lay leaders
- 4 Encouraging parishioners to volunteer
- 5 Providing training opportunities for volunteers



- 1 Communicating stewardship as a way of life
- 2 Forming an active Stewardship Commission
- 3 Supporting an active Finance Council
- 4 Financial transparency/accountability



- 1 Forming a vocations committee
- 2 Promoting vocations to priesthood/religious life
- 3 Promoting prayer for vocations
- 4 Inviting young people to consider Church vocations
- 5 Teaching vocation awareness



- 1 Providing regular meetings for teens
- 2 Providing special events for teens (e.g. retreats)
- 3 Engaging youth in parish life and liturgies
- 4 Providing regular meetings for young adults
- 5 Hosting special events for young adults
- 6 Engaging young adults in parish ministries and outreaches

ST. RONALD

CLINTON TOWNSHIP, MI / CENTRAL MACOMB VICARIATE / NORTHEAST REGION

Survey Results Part II: Faith and Parish Life

YEARS AT CURRENT PARISH

How many years have you attended Mass at your current parish?

	Count	%
Less than 1 year	1	1.1%
1-5 years	10	11.0%
6-10 years	25	27.5%
11-20 years	25	27.5%
21-30 years	12	13.2%
31+ years	18	19.8%
Total	91	100.0%

MASS ATTENDANCE

How often do you attend Mass?



REASONS TO MISS MASS

If you do not attend Mass regularly on Sundays, how much does each of the following explain why? % "somewhat" or "very"

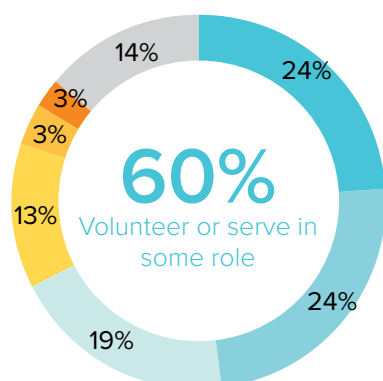
Demands of work, school, or sports	30.2%
Family concerns and needs	26.2%
Health problems or a disability	19.0%
Clusters, mergers, and closures of parishes	17.7%
Masses are boring/irrelevant to me	14.5%
The pastor is not welcoming	12.1%
The parish is not welcoming	9.8%
Divorce or marriage outside of Church	8.2%
Lack of children's ministries	6.7%

REGISTRATION

Are you a registered member at your current parish?



INVOLVEMENT IN THE PARISH



Do you serve, or have you ever served in any of the following roles in your parish?

KEY

- Member of a parish council, commission, or committee
- Volunteer (e.g. catechist, Vacation Bible School)
- Liturgical ministries (e.g. usher, Eucharistic Minister, lector)
- Music ministries (e.g. choir, musician, director)
- Parish support staff (e.g. secretary, maintenance)
- Parish staff (e.g. youth minister, business manager, DRE)
- None of the above

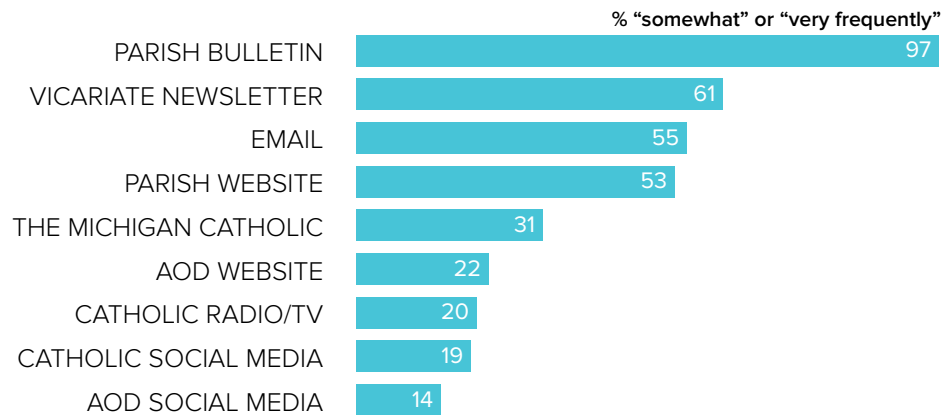
ST. RONALD

CLINTON TOWNSHIP, MI / CENTRAL MACOMB VICARIATE / NORTHEAST REGION

Survey Results Part II: Faith and Parish Life

COMMUNICATION METHODS

How often do you rely on the following for information about your parish, the Archdiocese, or the Catholic Church?



PARISH CHARACTERISTICS

How important to you are these characteristics in a parish?

	% "very important"
Quality worship service	89.8%
Parish embraces Church teachings and values	75.7%
Daily and weekend Mass schedules	75.6%
Children's ministries (for all age groups)	67.6%
Parish social groups/gatherings	50.7%
Service activities	45.7%
Small group ministries (e.g. Bible Study)	44.1%
Contemporary music	39.2%

	% "very important"
Traditional music	37.9%
Opportunities for penance/confession	34.2%
Devotions (rosary, adoration, etc.)	33.1%
Catholic school	23.7%
Mass in language(s) other than English	9.2%

PASTOR CHARACTERISTICS

How important to you are these characteristics in a pastor?

	% "very important"
Ability to connect scripture to the present	91.5%
Welcoming spirit	91.0%
Invites people into a personal relationship w/ Jesus	85.6%
Manages parish resources effectively	80.6%
Engaging preaching style	79.9%
Values input from laity	72.6%
Challenges people to live a life of discipleship	65.8%
Communicates parish priorities	64.1%

CHALLENGES FACING THE CHURCH

How would you rate the following as challenges facing the Catholic Church in Southeast Michigan today?

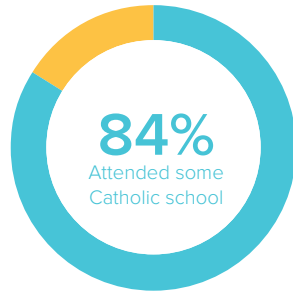
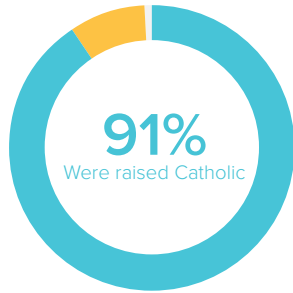
TOP 5 RESPONSES	% "serious challenge"
Shortage of priests/decline in vocations	88.6%
Clustering, merging, and closing of parishes	74.5%
Engaging teens and young adults in parish life	71.2%
Church funds/financial management	61.2%
Priest sexual abuse	55.4%

ST. RONALD

CLINTON TOWNSHIP, MI / CENTRAL MACOMB VICARIATE / NORTHEAST REGION

Survey Results Part III: Demographics

CATHOLIC BACKGROUND AND EDUCATION



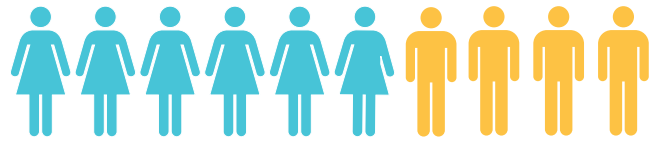
KEY

- Raised Catholic
- Converted to Catholicism
- Not Catholic

KEY

- Attended Catholic school
- Did not attend Catholic school

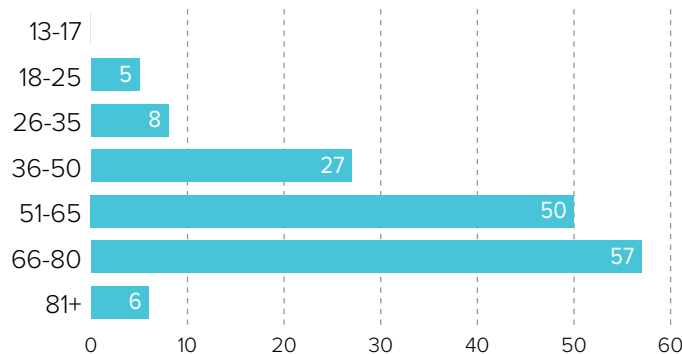
GENDER



60% WOMEN

40% MEN

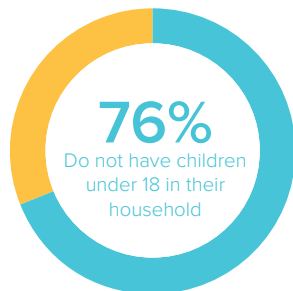
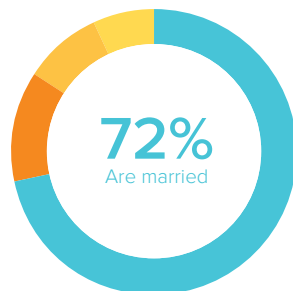
AGE



RACIAL OR ETHNIC BACKGROUND

	Count	%
White	146	96.7%
Black	0	0.0%
Hispanic	1	.7%
Asian	2	1.3%
Native American	2	1.3%
Other	1	0.7%
Total	152	100.0%

MARITAL STATUS AND CHILDREN IN HOUSEHOLD



KEY

- Married or remarried
- Divorced or separated
- Widowed
- Single, never married

KEY

- Do not have children
- Have children

ESTIMATED HOUSEHOLD INCOME

	Count	%
\$19,000 or less	6	4.6%
\$20,000-39,999	37	28.2%
\$40,000-59,999	30	22.9%
\$60,000-79,999	22	16.8%
\$80,000-99,999	21	16.0%
\$100,000 +	15	11.5%
Total	131	100.0%