

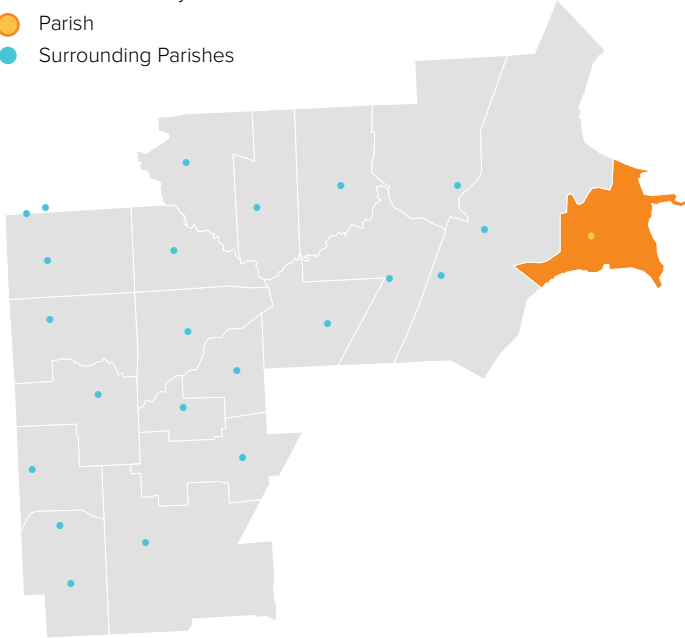
# ST. HUBERT

HARRISON TOWNSHIP, MI / CENTRAL MACOMB VICARIATE / NORTHEAST REGION

## Parish Profile and Survey Results

### KEY

- Parish Boundary
- Parish
- Surrounding Parishes



### TOTAL SURVEY RESPONSES

Parish ID	Name	responses
388	St. Hubert	179

### PARISH LOCATION AND BOUNDARY - WITHIN VICARIATE

#### PARISH CATHOLIC POPULATION FACTS

	2000	2013	% Change
Total Registered Households	1,225	1,468	19.8%
Total Registered Individuals	3,675	4,110	11.8%
% of HH in Parish Boundary		43%	
% of HH Outside Parish Boundary		57%	

#### KEY U.S. CENSUS FACTS

	2000	2010	% Change
Total Households	3,817	2,666	-30.2%
Total Population	9,379	10,240	9.2%
Median Household Income	\$75,202	\$73,838	-1.8%
Median Age	35.4	29.1	-17.7%

#### PARISH FINANCIAL STATS

	2009	2013	% Change
Total Operating Income	\$750,135	\$866,044	15.5%
Total Operating Expenses	\$810,845	\$637,759	-21.3%
LDP Debt	\$-	\$-	N/A
AOD & MCC	N/A	\$-	N/A
Outstanding payables			
Total Savings	\$80,325	\$369,755	360.3%

#### PARISH SACRAMENTAL STATS (5 YR. TREND)

	2009	2013	% Change
Baptisms	37	28	-24.3%
First Communion	63	35	-44.4%
Confirmations	61	34	-44.3%
Total Marriages	24	9	-62.5%
Funerals	52	41	-21.2%

# ST. HUBERT

HARRISON TOWNSHIP, MI / CENTRAL MACOMB VICARIATE / NORTHEAST REGION

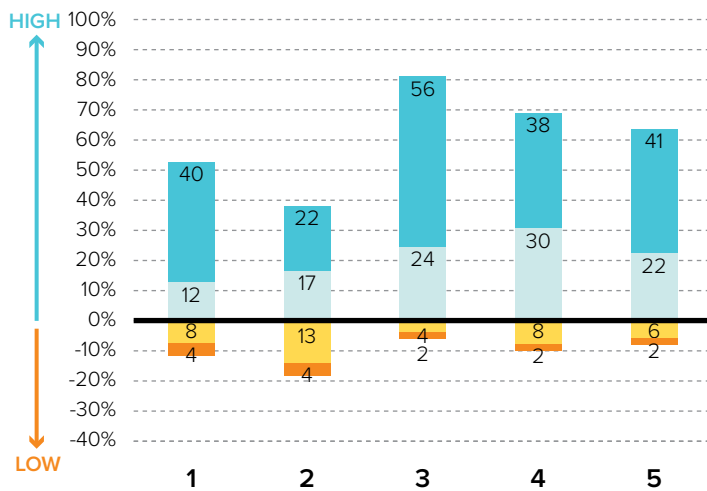
**KEY**  
 % Excellent  
 % Good  
 % Fair  
 % Poor

## Survey Results Part I: Mission Priorities

The following graphs show how parishioners rated each of the objectives associated with a mission priority area. The graphs are split between positive values for high ratings (“good” or “excellent”) and negative values for lower ratings (“fair” or “poor”). “Don’t know” responses are not shown in the graphs at right to more easily show the split between high and low ratings.

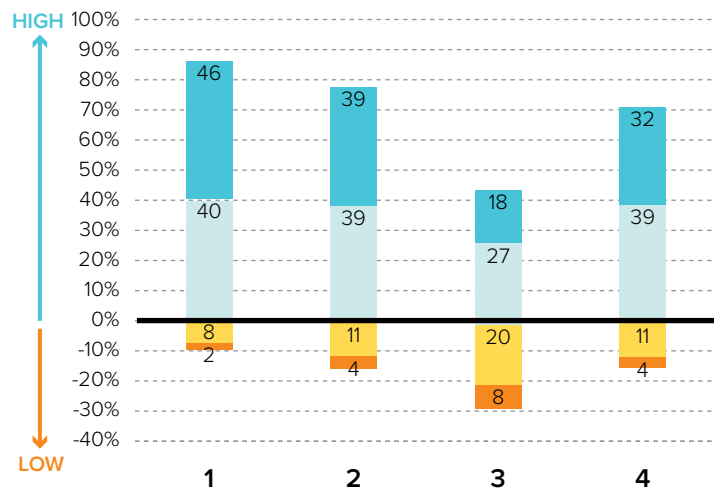
To the best of your ability, please evaluate how well your parish is doing in each of these areas.

### PRIORITY AREA: CATHOLIC SCHOOLS



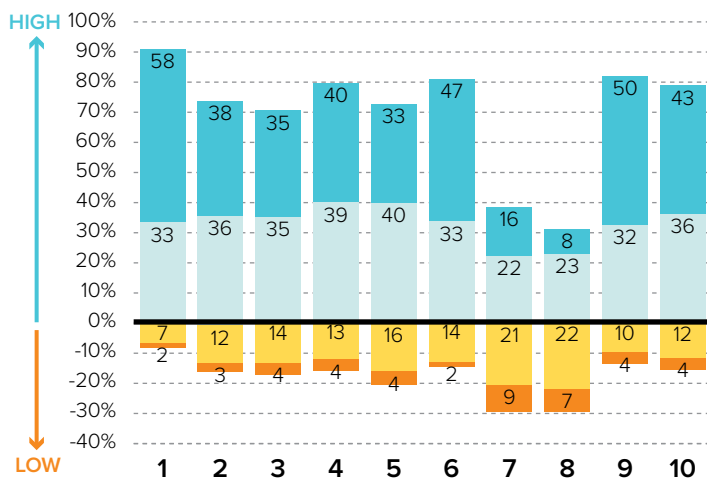
- 1 Ensuring a Catholic education is financially viable
- 2 Keeping tuition affordable to all Catholics
- 3 Maintaining a Catholic identity
- 4 Using technology effectively
- 5 Ensuring academic success and Catholic formation

### PRIORITY AREA: CHRISTIAN SERVICE AND OUTREACH



- 1 Christian service projects for the parish community
- 2 Christian service projects for youth and young adults
- 3 Building interfaith relationships
- 4 Collaborating with other community organizations

### EVANGELIZATION AND CATECHESIS



- 1 Explicitly proclaiming the Gospel of Jesus Christ
- 2 Evangelization leadership (committee, minister, etc.)
- 3 Offering ministries to evangelize adults
- 4 Offering ministries for spiritual growth
- 5 Offering programs aimed at parish renewal
- 6 Prayers for healing and spiritual reconciliation
- 7 Reaching out to inactive Catholics
- 8 Reaching out to non-Catholics
- 9 Providing adult faith formation and catechesis
- 10 Strengthening religious education

# ST. HUBERT

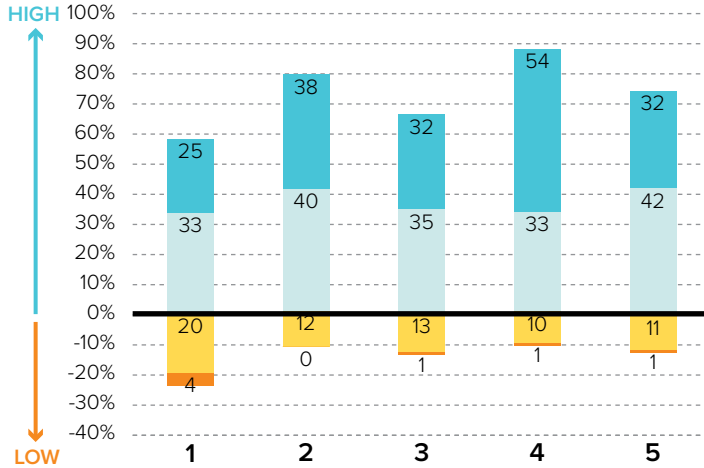
HARRISON TOWNSHIP, MI / CENTRAL MACOMB VICARIATE / NORTHEAST REGION

## KEY

- % Excellent
- % Good
- % Fair
- % Poor

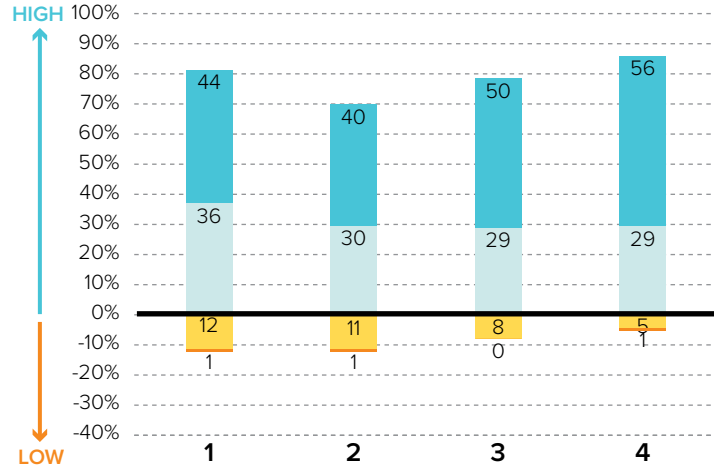
## Survey Results Part I: Mission Priorities

### PRIORITY AREA: LAY LEADERSHIP



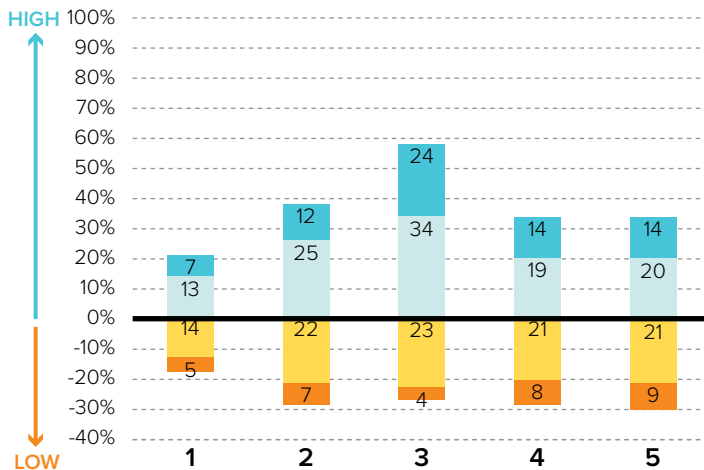
- 1 Training parishioners to identify their spiritual gifts
- 2 Increasing opportunities for lay involvement
- 3 Training and ministry for lay leaders
- 4 Encouraging parishioners to volunteer
- 5 Providing training opportunities for volunteers

### PRIORITY AREA: STEWARDSHIP AND ADMINISTRATION



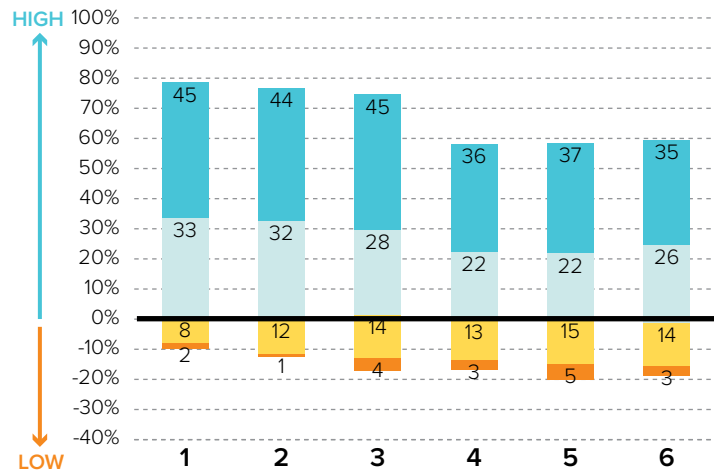
- 1 Communicating stewardship as a way of life
- 2 Forming an active Stewardship Commission
- 3 Supporting an active Finance Council
- 4 Financial transparency/accountability

### PRIORITY AREA: VOCATIONS



- 1 Forming a vocations committee
- 2 Promoting vocations to priesthood/religious life
- 3 Promoting prayer for vocations
- 4 Inviting young people to consider Church vocations
- 5 Teaching vocation awareness

### PRIORITY AREA: YOUTH AND YOUNG ADULTS



- 1 Providing regular meetings for teens
- 2 Providing special events for teens (e.g. retreats)
- 3 Engaging youth in parish life and liturgies
- 4 Providing regular meetings for young adults
- 5 Hosting special events for young adults
- 6 Engaging young adults in parish ministries and outreaches

# ST. HUBERT

HARRISON TOWNSHIP, MI / CENTRAL MACOMB VICARIATE / NORTHEAST REGION

## Survey Results Part II: Faith and Parish Life

### YEARS AT CURRENT PARISH

How many years have you attended Mass at your current parish?

	Count	%
Less than 1 year	0	0.0%
1-5 years	20	16.3%
6-10 years	16	13.0%
11-20 years	43	35.0%
21-30 years	23	18.7%
31+ years	21	17.1%
Total	123	100.0%

### MASS ATTENDANCE

How often do you attend Mass?



### REASONS TO MISS MASS

If you do not attend Mass regularly on Sundays, how much does each of the following explain why? % "somewhat" or "very"

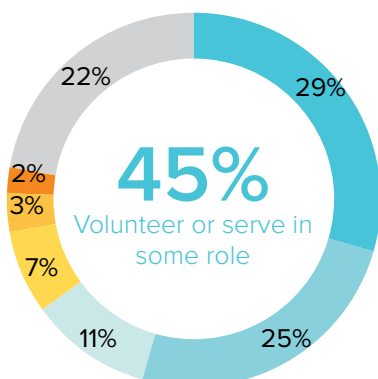
Demands of work, school, or sports	29.8%
Family concerns and needs	17.2%
Health problems or a disability	11.9%
Divorce or marriage outside of Church	6.8%
Clusters, mergers, and closures of parishes	5.1%
Masses are boring/irrelevant to me	5.1%
The parish is not welcoming	3.6%
Lack of children's ministries	3.4%
The pastor is not welcoming	1.7%

### REGISTRATION

Are you a registered member at your current parish?



### INVOLVEMENT IN THE PARISH



Do you serve, or have you ever served in any of the following roles in your parish?

#### KEY

- Volunteer (e.g. catechist, Vacation Bible School)
- Liturgical ministries (e.g. usher, Eucharistic Minister, lector)
- Member of a parish council, commission, or committee
- Music ministries (e.g. choir, musician, director)
- Parish support staff (e.g. secretary, maintenance)
- Parish staff (e.g. youth minister, business manager, DRE)
- None of the above

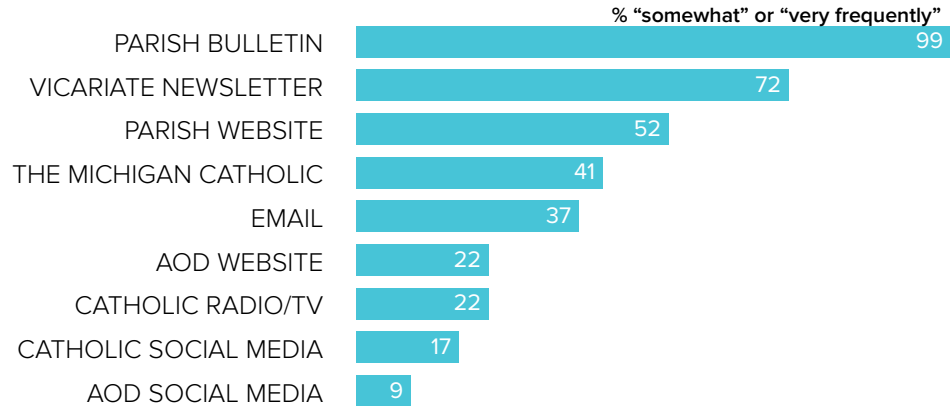
# ST. HUBERT

HARRISON TOWNSHIP, MI / CENTRAL MACOMB VICARIATE / NORTHEAST REGION

## Survey Results Part II: Faith and Parish Life

### COMMUNICATION METHODS

How often do you rely on the following for information about your parish, the Archdiocese, or the Catholic Church?



### PARISH CHARACTERISTICS

How important to you are these characteristics in a parish?

	% "very important"		% "very important"
Quality worship service	95.0%	Devotions (rosary, adoration, etc.)	30.6%
Parish embraces Church teachings and values	83.5%	Catholic school	29.8%
Daily and weekend Mass schedules	71.9%	Small group ministries (e.g. Bible Study)	28.9%
Children's ministries (for all age groups)	58.7%	Contemporary music	19.0%
Parish social groups/gatherings	43.0%	Mass in language(s) other than English	2.6%
Service activities	40.2%		
Traditional music	40.0%		
Opportunities for penance/confession	34.5%		

### PASTOR CHARACTERISTICS

How important to you are these characteristics in a pastor?

	% "very important"
Welcoming spirit	95.1%
Ability to connect scripture to the present	93.4%
Invites people into a personal relationship w/ Jesus	86.8%
Engaging preaching style	86.8%
Manages parish resources effectively	82.6%
Communicates parish priorities	74.6%
Values input from laity	74.4%
Challenges people to live a life of discipleship	66.9%

### CHALLENGES FACING THE CHURCH

How would you rate the following as challenges facing the Catholic Church in Southeast Michigan today?

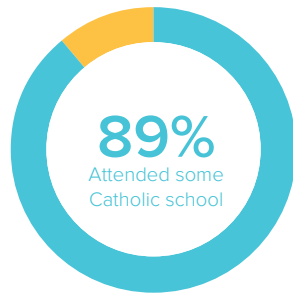
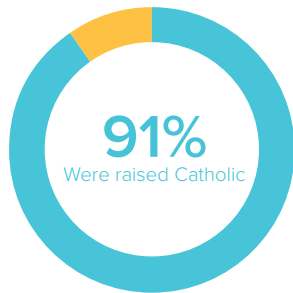
	% "serious challenge"
<b>TOP 5 RESPONSES</b>	
Shortage of priests/decline in vocations	89.2%
Engaging teens and young adults in parish life	66.9%
Society in general is less religious	63.0%
Clustering, merging, and closing of parishes	58.0%
Priest sexual abuse	49.6%

# ST. HUBERT

HARRISON TOWNSHIP, MI / CENTRAL MACOMB VICARIATE / NORTHEAST REGION

## Survey Results Part III: Demographics

### CATHOLIC BACKGROUND AND EDUCATION



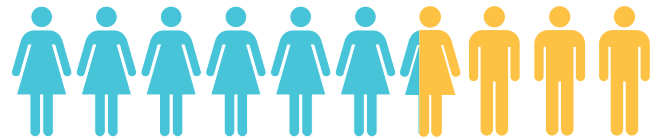
**KEY**

- Raised Catholic
- Converted to Catholicism
- Not Catholic

**KEY**

- Attended Catholic school
- Did not attend Catholic school

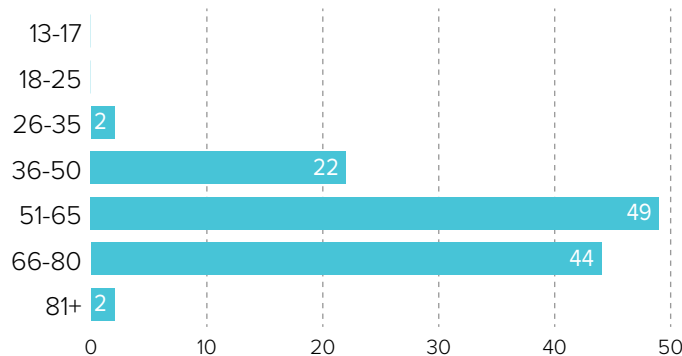
### GENDER



62% WOMEN

38% MEN

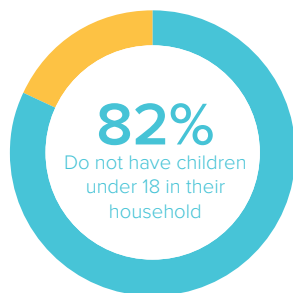
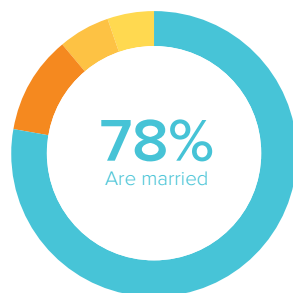
### AGE



### RACIAL OR ETHNIC BACKGROUND

	Count	%
White	116	100.0%
Black	0	0.0%
Hispanic	0	0.0%
Asian	0	0.0%
Native American	0	0.0%
Other	0	0.0%
<b>Total</b>	<b>116</b>	<b>100.0%</b>

### MARITAL STATUS AND CHILDREN IN HOUSEHOLD



**KEY**

- Married or remarried
- Widowed
- Single, never married
- Divorced or separated

**KEY**

- Do not have children
- Have children

### ESTIMATED HOUSEHOLD INCOME

	Count	%
\$19,000 or less	5	5.0%
\$20,000-39,999	12	11.9%
\$40,000-59,999	23	22.8%
\$60,000-79,999	19	18.8%
\$80,000-99,999	12	11.9%
\$100,000 +	30	29.7%
<b>Total</b>	<b>101</b>	<b>100.0%</b>