

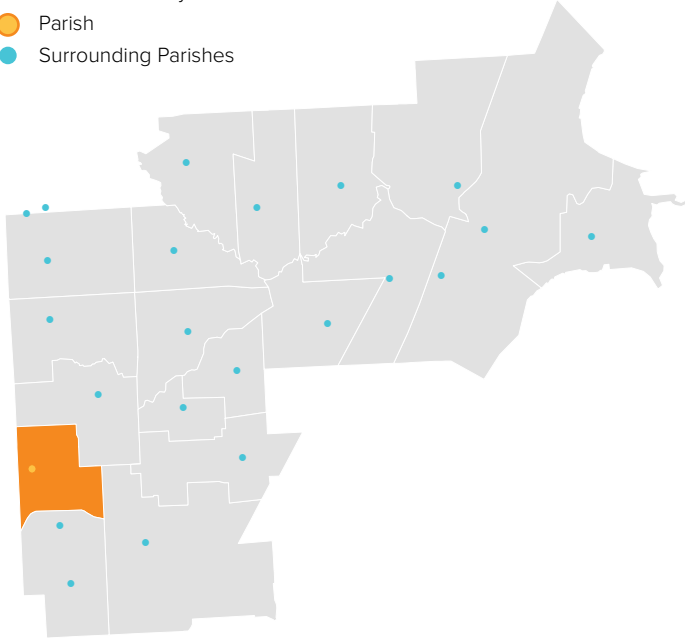
ST. LOUISE DE MARILLAC

WARREN, MI / CENTRAL MACOMB VICARIATE / NORTHEAST REGION

Parish Profile and Survey Results

KEY

- Parish Boundary
- Parish
- Surrounding Parishes



TOTAL SURVEY RESPONSES

Parish ID	Name	responses
518	St. Louise de Marillac	92

PARISH LOCATION AND BOUNDARY - WITHIN VICARIATE

PARISH CATHOLIC POPULATION FACTS

	2000	2013	% Change
Total Registered Households	1,691	1,243	-26.5%
Total Registered Individuals	5,073	3,480	-31.4%
% of HH in Parish Boundary		62%	
% of HH Outside Parish Boundary		38%	

KEY U.S. CENSUS FACTS

	2000	2010	% Change
Total Households	6,257	6,438	2.9%
Total Population	15,659	15,305	-2.3%
Median Household Income	\$56,524	\$53,055	-6.1%
Median Age	39.0	35.1	-9.9%

PARISH FINANCIAL STATS

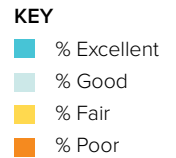
	2009	2013	% Change
Total Operating Income	\$836,925	\$843,463	0.8%
Total Operating Expenses	\$767,789	\$745,632	-2.9%
LDP Debt	\$1,914	\$-	-100.0%
AOD & MCC	N/A	\$-	N/A
Outstanding payables			
Total Savings	\$660,445	\$359,907	-45.5%

PARISH SACRAMENTAL STATS (5 YR. TREND)

	2009	2013	% Change
Baptisms	18	12	-33.3%
First Communion	26	20	-23.1%
Confirmations	32	17	-46.9%
Total Marriages	3	5	66.7%
Funerals	42	46	9.5%

ST. LOUISE DE MARILLAC

WARREN, MI / CENTRAL MACOMB VICARIATE / NORTHEAST REGION

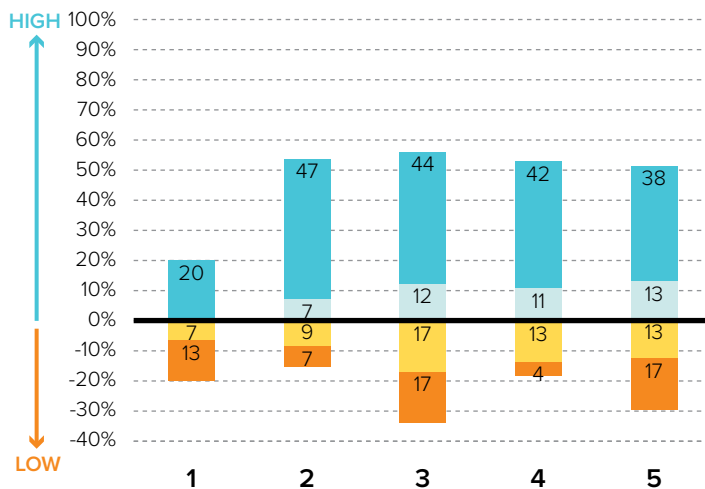


Survey Results Part I: Mission Priorities

The following graphs show how parishioners rated each of the objectives associated with a mission priority area. The graphs are split between positive values for high ratings (“good” or “excellent”) and negative values for lower ratings (“fair” or “poor”). “Don’t know” responses are not shown in the graphs at right to more easily show the split between high and low ratings.

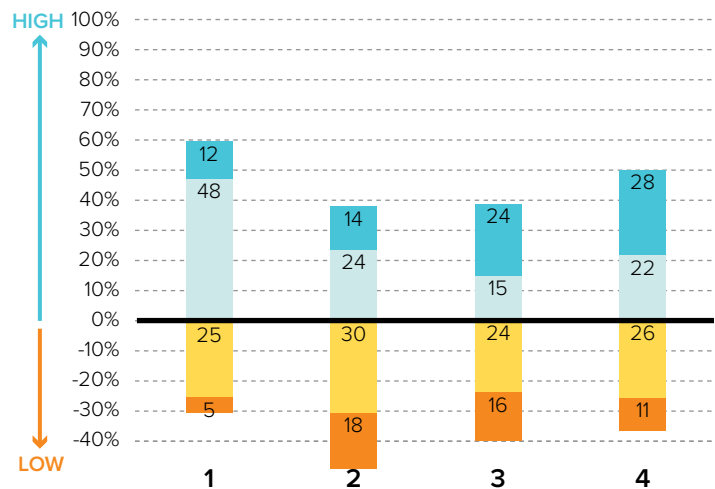
To the best of your ability, please evaluate how well your parish is doing in each of these areas.

PRIORITY AREA: CATHOLIC SCHOOLS



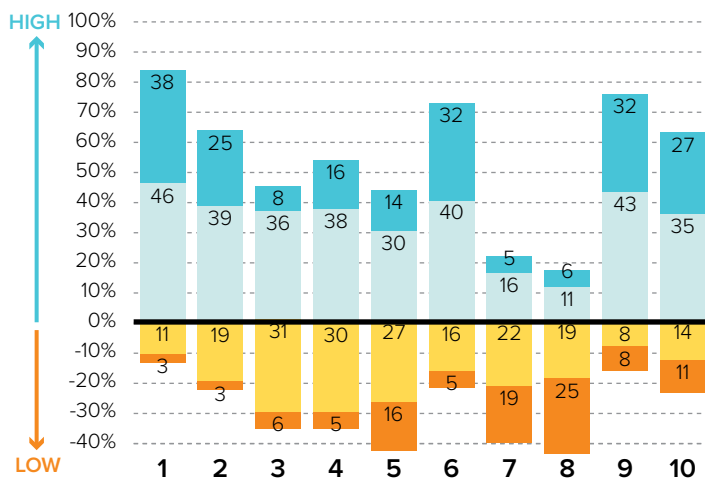
- 1 Ensuring a Catholic education is financially viable
- 2 Keeping tuition affordable to all Catholics
- 3 Maintaining a Catholic identity
- 4 Using technology effectively
- 5 Ensuring academic success and Catholic formation

PRIORITY AREA: CHRISTIAN SERVICE AND OUTREACH



- 1 Christian service projects for the parish community
- 2 Christian service projects for youth and young adults
- 3 Building interfaith relationships
- 4 Collaborating with other community organizations

EVANGELIZATION AND CATECHESIS



- 1 Explicitly proclaiming the Gospel of Jesus Christ
- 2 Evangelization leadership (committee, minister, etc.)
- 3 Offering ministries to evangelize adults
- 4 Offering ministries for spiritual growth
- 5 Offering programs aimed at parish renewal
- 6 Prayers for healing and spiritual reconciliation
- 7 Reaching out to inactive Catholics
- 8 Reaching out to non-Catholics
- 9 Providing adult faith formation and catechesis
- 10 Strengthening religious education

ST. LOUISE DE MARILLAC

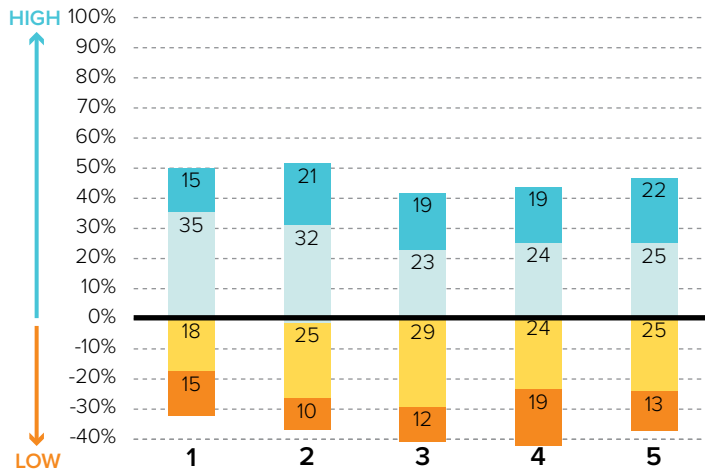
WARREN, MI / CENTRAL MACOMB VICARIATE / NORTHEAST REGION

KEY

- % Excellent
- % Good
- % Fair
- % Poor

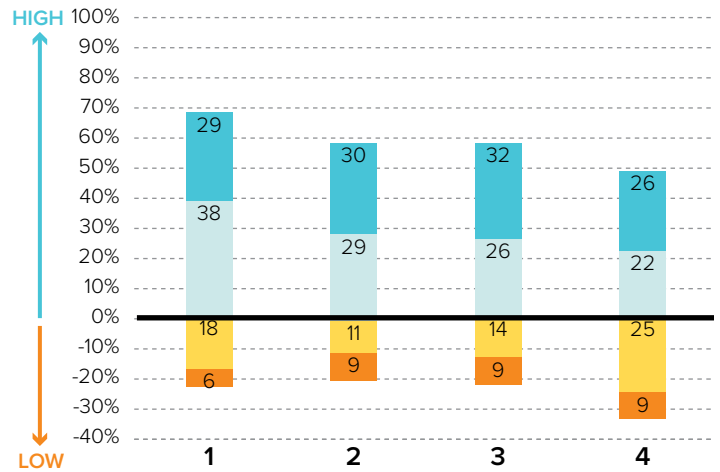
Survey Results Part I: Mission Priorities

PRIORITY AREA: LAY LEADERSHIP



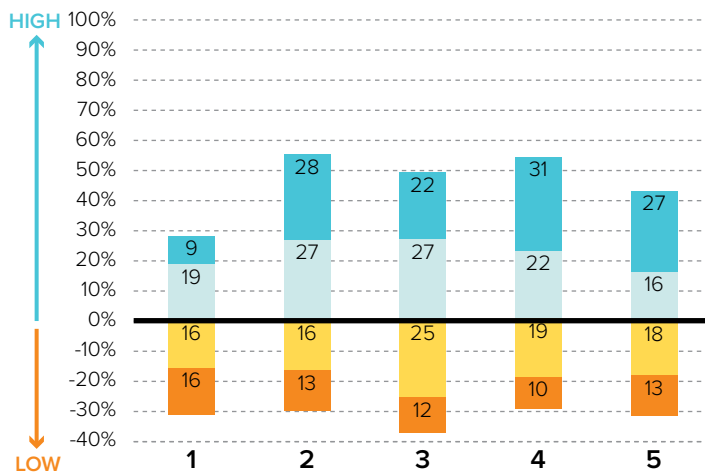
- 1 Training parishioners to identify their spiritual gifts
- 2 Increasing opportunities for lay involvement
- 3 Training and ministry for lay leaders
- 4 Encouraging parishioners to volunteer
- 5 Providing training opportunities for volunteers

PRIORITY AREA: STEWARDSHIP AND ADMINISTRATION



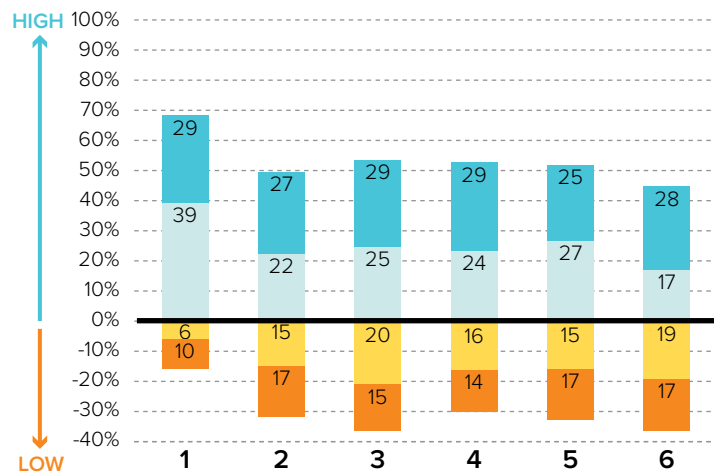
- 1 Communicating stewardship as a way of life
- 2 Forming an active Stewardship Commission
- 3 Supporting an active Finance Council
- 4 Financial transparency/accountability

PRIORITY AREA: VOCATIONS



- 1 Forming a vocations committee
- 2 Promoting vocations to priesthood/religious life
- 3 Promoting prayer for vocations
- 4 Inviting young people to consider Church vocations
- 5 Teaching vocation awareness

PRIORITY AREA: YOUTH AND YOUNG ADULTS



- 1 Providing regular meetings for teens
- 2 Providing special events for teens (e.g. retreats)
- 3 Engaging youth in parish life and liturgies
- 4 Providing regular meetings for young adults
- 5 Hosting special events for young adults
- 6 Engaging young adults in parish ministries and outreaches

ST. LOUISE DE MARILLAC

WARREN, MI / CENTRAL MACOMB VICARIATE / NORTHEAST REGION

Survey Results Part II: Faith and Parish Life

YEARS AT CURRENT PARISH

How many years have you attended Mass at your current parish?

	Count	%
Less than 1 year	1	3.1%
1-5 years	0	0.0%
6-10 years	5	15.6%
11-20 years	11	34.4%
21-30 years	10	31.3%
31+ years	5	15.6%
Total	32	100.0%

MASS ATTENDANCE

How often do you attend Mass?



REASONS TO MISS MASS

If you do not attend Mass regularly on Sundays, how much does each of the following explain why? % "somewhat" or "very"

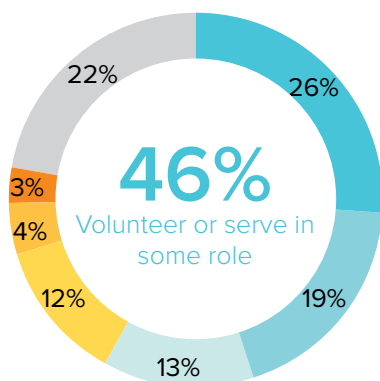
Family concerns and needs	26.3%
Health problems or a disability	21.1%
Demands of work, school, or sports	18.8%
Masses are boring/irrelevant to me	15.8%
The parish is not welcoming	15.8%
Clusters, mergers, and closures of parishes	15.8%
The pastor is not welcoming	11.1%
Lack of children's ministries	10.5%
Divorce or marriage outside of Church	10.5%

REGISTRATION

Are you a registered member at your current parish?



INVOLVEMENT IN THE PARISH



Do you serve, or have you ever served in any of the following roles in your parish?

KEY

- Volunteer (e.g. catechist, Vacation Bible School)
- Member of a parish council, commission, or committee
- Music ministries (e.g. choir, musician, director)
- Liturgical ministries (e.g. usher, Eucharistic Minister, lector)
- Parish support staff (e.g. secretary, maintenance)
- Parish staff (e.g. youth minister, business manager, DRE)
- None of the above

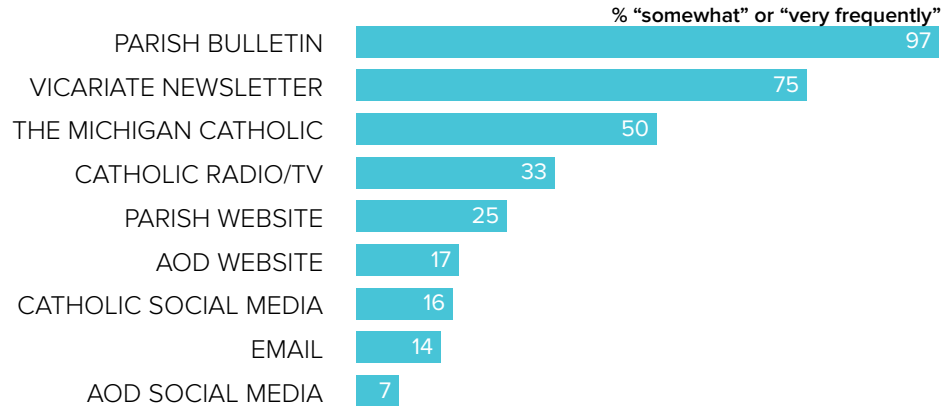
ST. LOUISE DE MARILLAC

WARREN, MI / CENTRAL MACOMB VICARIATE / NORTHEAST REGION

Survey Results Part II: Faith and Parish Life

COMMUNICATION METHODS

How often do you rely on the following for information about your parish, the Archdiocese, or the Catholic Church?



PARISH CHARACTERISTICS

How important to you are these characteristics in a parish?

	% "very important"		% "very important"
Quality worship service	90.3%	Devotions (rosary, adoration, etc.)	35.9%
Daily and weekend Mass schedules	81.3%	Contemporary music	31.8%
Parish embraces Church teachings and values	67.6%	Small group ministries (e.g. Bible Study)	27.3%
Children's ministries (for all age groups)	56.7%	Catholic school	24.2%
Parish social groups/gatherings	44.8%	Mass in language(s) other than English	6.6%
Traditional music	44.1%		
Service activities	42.9%		
Opportunities for penance/confession	38.2%		

PASTOR CHARACTERISTICS

How important to you are these characteristics in a pastor?

	% "very important"
Welcoming spirit	93.8%
Ability to connect scripture to the present	84.3%
Invites people into a personal relationship w/ Jesus	79.7%
Manages parish resources effectively	75.0%
Engaging preaching style	73.9%
Values input from laity	63.2%
Communicates parish priorities	58.8%
Challenges people to live a life of discipleship	51.5%

CHALLENGES FACING THE CHURCH

How would you rate the following as challenges facing the Catholic Church in Southeast Michigan today?

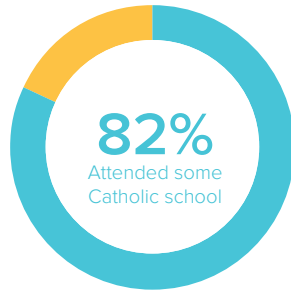
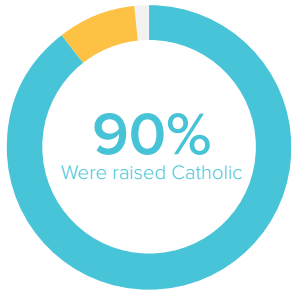
	% "serious challenge"
TOP 5 RESPONSES	
Shortage of priests/decline in vocations	87.1%
Engaging teens and young adults in parish life	73.9%
Society in general is less religious	69.1%
Church funds/financial management	64.7%
Disconnect between Church teachings and popular culture	56.7%

ST. LOUISE DE MARILLAC

WARREN, MI / CENTRAL MACOMB VICARIATE / NORTHEAST REGION

Survey Results Part III: Demographics

CATHOLIC BACKGROUND AND EDUCATION



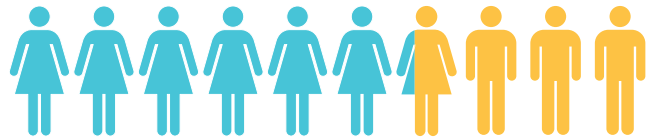
KEY

- Raised Catholic
- Converted to Catholicism
- Not Catholic

KEY

- Attended Catholic school
- Did not attend Catholic school

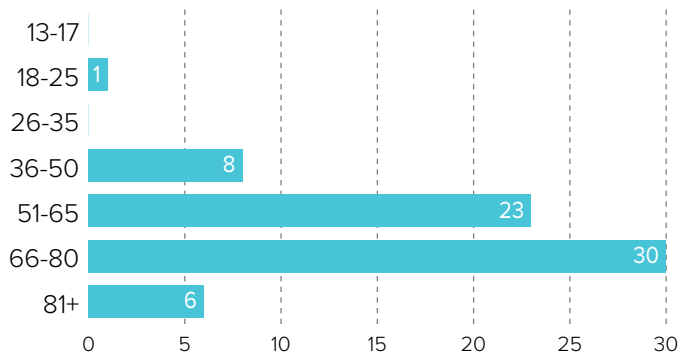
GENDER



62% WOMEN

38% MEN

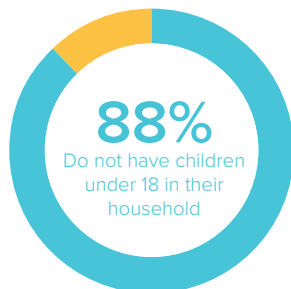
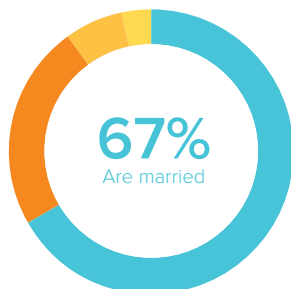
AGE



RACIAL OR ETHNIC BACKGROUND

	Count	%
White	66	100.0%
Black	0	0.0%
Hispanic	0	0.0%
Asian	0	0.0%
Native American	0	0.0%
Other	0	0.0%
Total	66	100.0%

MARITAL STATUS AND CHILDREN IN HOUSEHOLD



KEY

- Married or remarried
- Single, never married
- Widowed
- Divorced or separated

KEY

- Do not have children
- Have children

ESTIMATED HOUSEHOLD INCOME

	Count	%
\$19,000 or less	4	6.7%
\$20,000-39,999	21	35.0%
\$40,000-59,999	11	18.3%
\$60,000-79,999	7	11.7%
\$80,000-99,999	9	15.0%
\$100,000 +	8	13.3%
Total	60	100.0%