

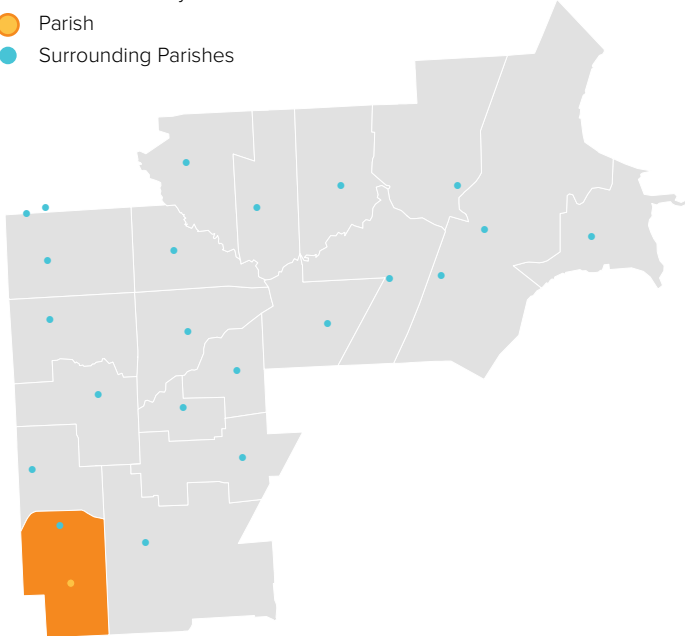
# ST. MARTIN DE PORRES

WARREN, MI / CENTRAL MACOMB VICARIATE / NORTHEAST REGION

## Parish Profile and Survey Results

### KEY

- Parish Boundary
- Parish
- Surrounding Parishes



### TOTAL SURVEY RESPONSES

Parish ID	Name	responses
544	St. Martin de Porres	135

### PARISH LOCATION AND BOUNDARY - WITHIN VICARIATE

#### PARISH CATHOLIC POPULATION FACTS

	2000	2013	% Change
Total Registered Households	1,978	1,412	-28.6%
Total Registered Individuals	5,934	3,954	-33.4%
% of HH in Parish Boundary		44%	
% of HH Outside Parish Boundary		56%	

#### KEY U.S. CENSUS FACTS

	2000	2010	% Change
Total Households	3,798	3,925	3.3%
Total Population	9,088	8,793	-3.2%
Median Household Income	\$54,389	\$59,586	9.6%
Median Age	44.6	41.4	-7.2%

#### PARISH FINANCIAL STATS

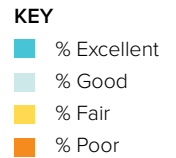
	2009	2013	% Change
Total Operating Income	\$724,329	\$784,046	8.2%
Total Operating Expenses	\$745,511	\$690,953	-7.3%
LDP Debt	\$-	\$-	0.0%
AOD & MCC	N/A	\$-	N/A
Outstanding payables			
Total Savings	\$280,262	\$288,971	3.1%

#### PARISH SACRAMENTAL STATS (5 YR. TREND)

	2009	2013	% Change
Baptisms	46	57	23.9%
First Communion	57	47	-17.5%
Confirmations	47	28	-40.4%
Total Marriages	15	8	-46.7%
Funerals	94	90	-4.3%

# ST. MARTIN DE PORRES

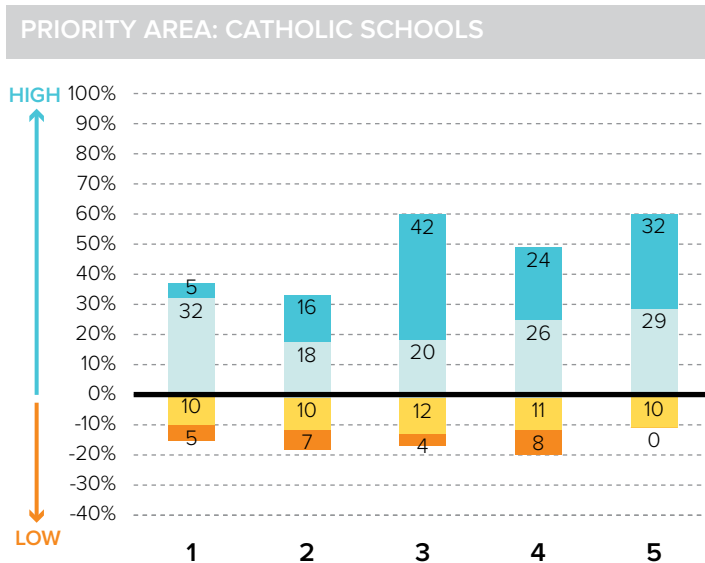
WARREN, MI / CENTRAL MACOMB VICARIATE / NORTHEAST REGION



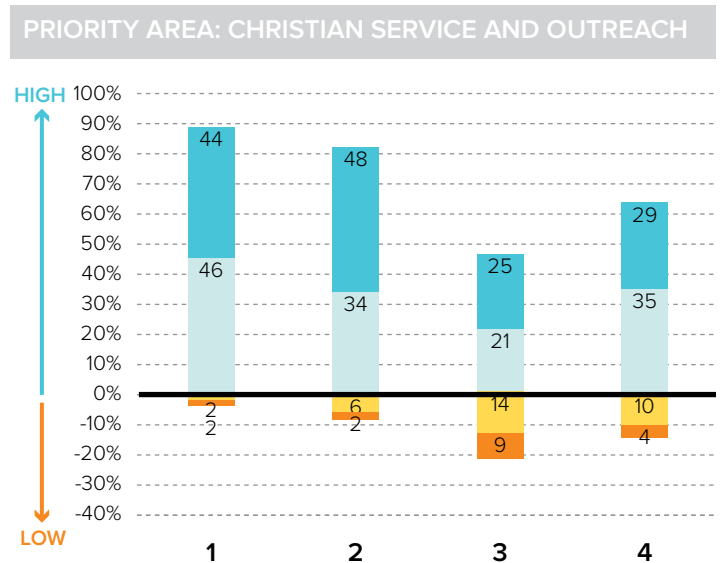
## Survey Results Part I: Mission Priorities

The following graphs show how parishioners rated each of the objectives associated with a mission priority area. The graphs are split between positive values for high ratings (“good” or “excellent”) and negative values for lower ratings (“fair” or “poor”). “Don’t know” responses are not shown in the graphs at right to more easily show the split between high and low ratings.

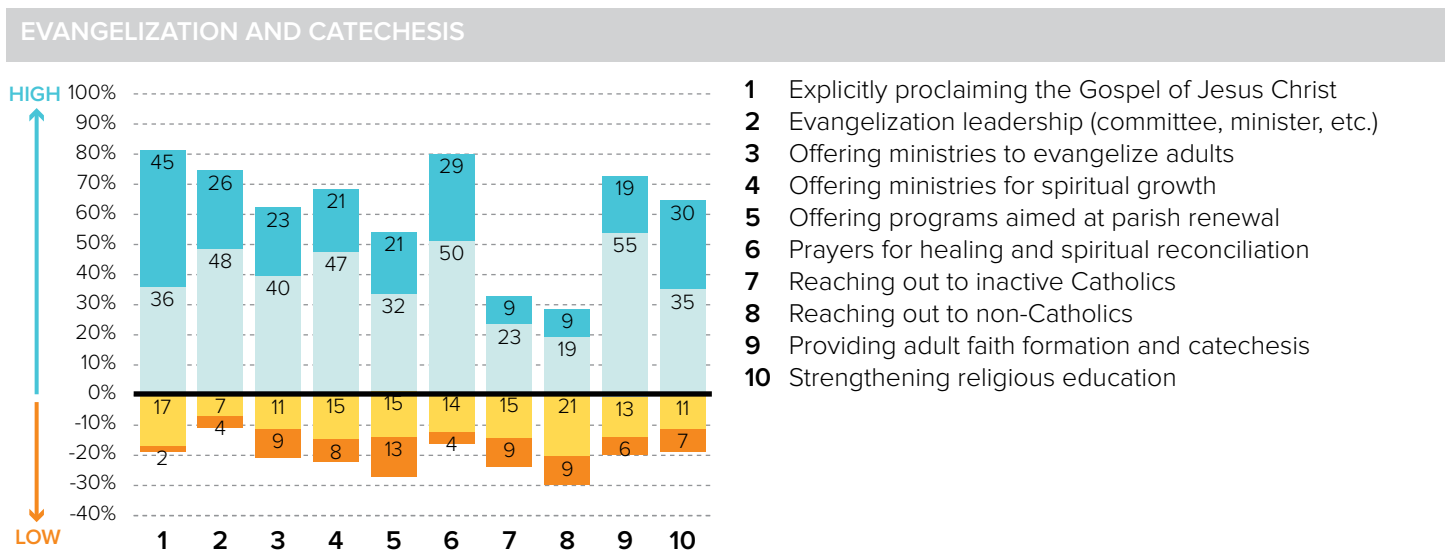
To the best of your ability, please evaluate how well your parish is doing in each of these areas.



- 1 Ensuring a Catholic education is financially viable
- 2 Keeping tuition affordable to all Catholics
- 3 Maintaining a Catholic identity
- 4 Using technology effectively
- 5 Ensuring academic success and Catholic formation



- 1 Christian service projects for the parish community
- 2 Christian service projects for youth and young adults
- 3 Building interfaith relationships
- 4 Collaborating with other community organizations



- 1 Explicitly proclaiming the Gospel of Jesus Christ
- 2 Evangelization leadership (committee, minister, etc.)
- 3 Offering ministries to evangelize adults
- 4 Offering ministries for spiritual growth
- 5 Offering programs aimed at parish renewal
- 6 Prayers for healing and spiritual reconciliation
- 7 Reaching out to inactive Catholics
- 8 Reaching out to non-Catholics
- 9 Providing adult faith formation and catechesis
- 10 Strengthening religious education

# ST. MARTIN DE PORRES

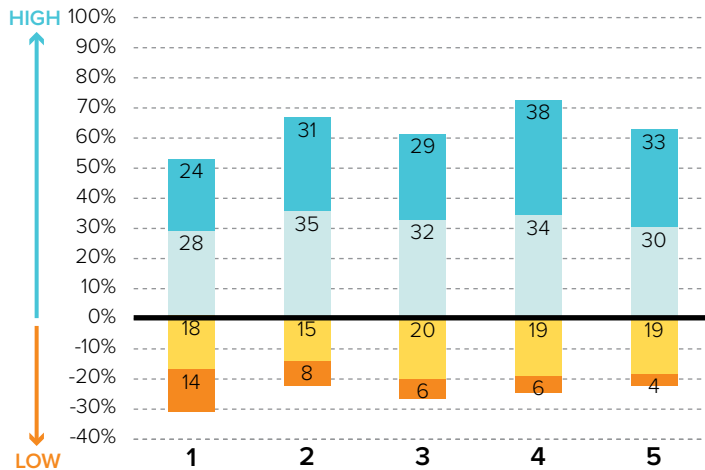
WARREN, MI / CENTRAL MACOMB VICARIATE / NORTHEAST REGION

## KEY

- % Excellent
- % Good
- % Fair
- % Poor

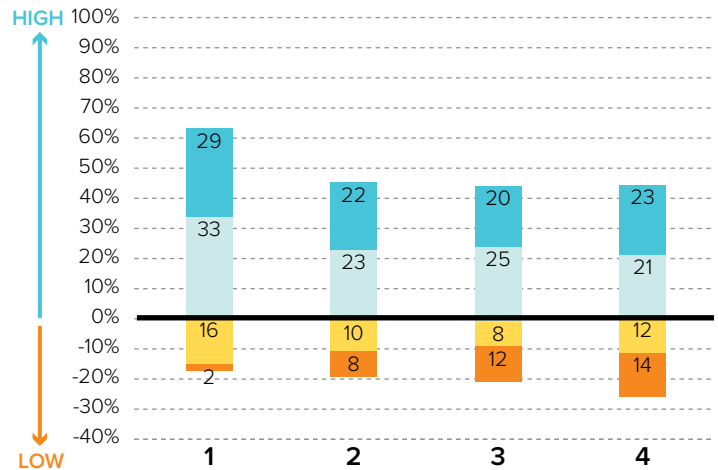
## Survey Results Part I: Mission Priorities

### PRIORITY AREA: LAY LEADERSHIP



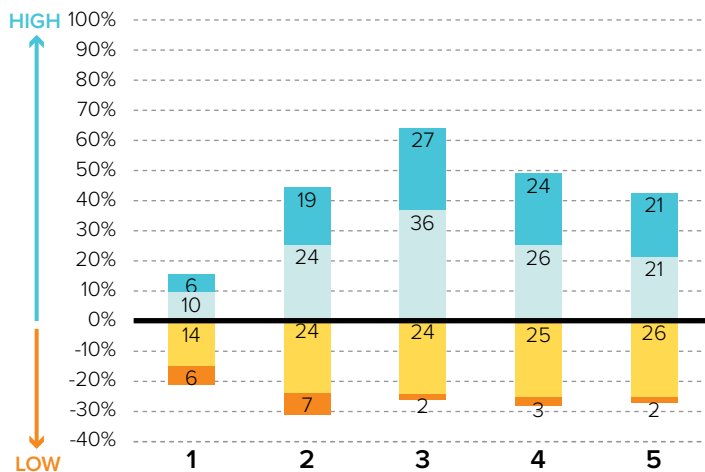
- 1 Training parishioners to identify their spiritual gifts
- 2 Increasing opportunities for lay involvement
- 3 Training and ministry for lay leaders
- 4 Encouraging parishioners to volunteer
- 5 Providing training opportunities for volunteers

### PRIORITY AREA: STEWARDSHIP AND ADMINISTRATION



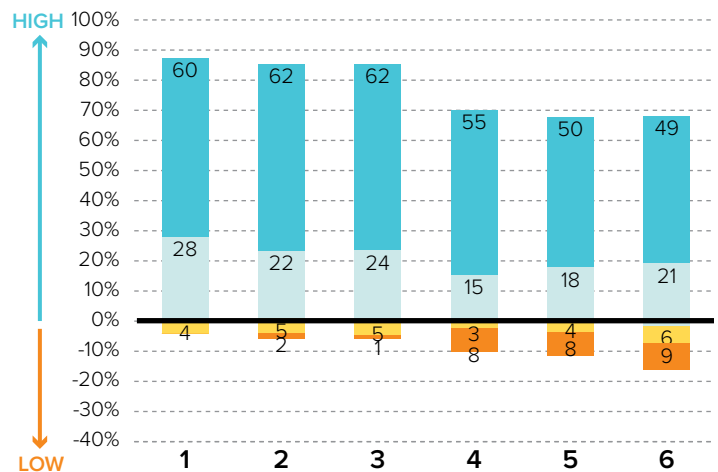
- 1 Communicating stewardship as a way of life
- 2 Forming an active Stewardship Commission
- 3 Supporting an active Finance Council
- 4 Financial transparency/accountability

### PRIORITY AREA: VOCATIONS



- 1 Forming a vocations committee
- 2 Promoting vocations to priesthood/religious life
- 3 Promoting prayer for vocations
- 4 Inviting young people to consider Church vocations
- 5 Teaching vocation awareness

### PRIORITY AREA: YOUTH AND YOUNG ADULTS



- 1 Providing regular meetings for teens
- 2 Providing special events for teens (e.g. retreats)
- 3 Engaging youth in parish life and liturgies
- 4 Providing regular meetings for young adults
- 5 Hosting special events for young adults
- 6 Engaging young adults in parish ministries and outreaches

# ST. MARTIN DE PORRES

WARREN, MI / CENTRAL MACOMB VICARIATE / NORTHEAST REGION

## Survey Results Part II: Faith and Parish Life

### YEARS AT CURRENT PARISH

How many years have you attended Mass at your current parish?

	Count	%
Less than 1 year	1	2.0%
1-5 years	12	24.5%
6-10 years	4	8.2%
11-20 years	13	26.5%
21-30 years	7	14.3%
31+ years	12	24.5%
Total	49	100.0%

### MASS ATTENDANCE

How often do you attend Mass?



### REASONS TO MISS MASS

If you do not attend Mass regularly on Sundays, how much does each of the following explain why? % "somewhat" or "very"

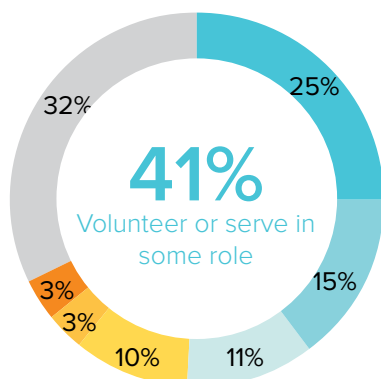
Demands of work, school, or sports	42.3%
Family concerns and needs	25.6%
Health problems or a disability	22.2%
The parish is not welcoming	12.8%
Masses are boring/irrelevant to me	12.5%
The pastor is not welcoming	10.3%
Divorce or marriage outside of Church	7.7%
Clusters, mergers, and closures of parishes	5.1%
Lack of children's ministries	2.6%

### REGISTRATION

Are you a registered member at your current parish?



### INVOLVEMENT IN THE PARISH



Do you serve, or have you ever served in any of the following roles in your parish?

#### KEY

- Volunteer (e.g. catechist, Vacation Bible School)
- Liturgical ministries (e.g. usher, Eucharistic Minister, lector)
- Music ministries (e.g. choir, musician, director)
- Member of a parish council, commission, or committee
- Parish staff (e.g. youth minister, business manager, DRE)
- Parish support staff (e.g. secretary, maintenance)
- None of the above

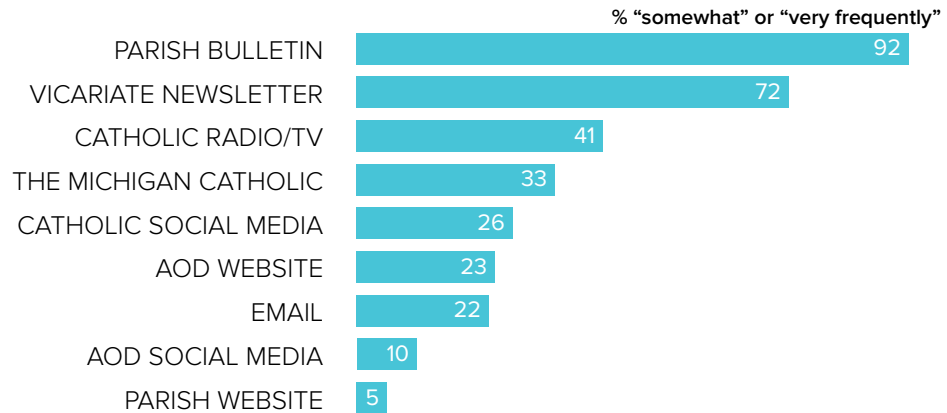
# ST. MARTIN DE PORRES

WARREN, MI / CENTRAL MACOMB VICARIATE / NORTHEAST REGION

## Survey Results Part II: Faith and Parish Life

### COMMUNICATION METHODS

How often do you rely on the following for information about your parish, the Archdiocese, or the Catholic Church?



### PARISH CHARACTERISTICS

How important to you are these characteristics in a parish?

	% "very important"		% "very important"
Quality worship service	93.9%	Parish social groups/gatherings	42.2%
Parish embraces Church teachings and values	83.3%	Catholic school	37.0%
Daily and weekend Mass schedules	79.6%	Service activities	34.6%
Children's ministries (for all age groups)	68.5%	Small group ministries (e.g. Bible Study)	31.8%
Devotions (rosary, adoration, etc.)	61.8%	Mass in language(s) other than English	8.6%
Traditional music	54.6%		
Opportunities for penance/confession	46.3%		
Contemporary music	42.5%		

### PASTOR CHARACTERISTICS

How important to you are these characteristics in a pastor?

	% "very important"
Welcoming spirit	98.0%
Manages parish resources effectively	91.2%
Invites people into a personal relationship w/ Jesus	88.5%
Engaging preaching style	88.5%
Ability to connect scripture to the present	85.1%
Communicates parish priorities	84.8%
Values input from laity	83.6%
Challenges people to live a life of discipleship	75.7%

### CHALLENGES FACING THE CHURCH

How would you rate the following as challenges facing the Catholic Church in Southeast Michigan today?

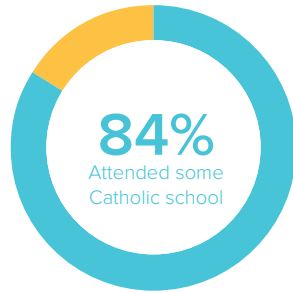
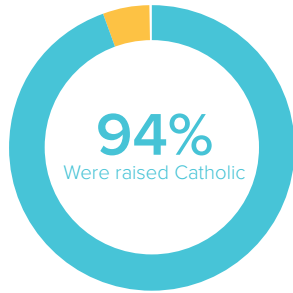
	% "serious challenge"
<b>TOP 5 RESPONSES</b>	
Shortage of priests/decline in vocations	85.7%
Engaging teens and young adults in parish life	73.6%
Clustering, merging, and closing of parishes	65.5%
Lack of participation in the sacraments	65.1%
Society in general is less religious	65.1%

# ST. MARTIN DE PORRES

WARREN, MI / CENTRAL MACOMB VICARIATE / NORTHEAST REGION

## Survey Results Part III: Demographics

### CATHOLIC BACKGROUND AND EDUCATION



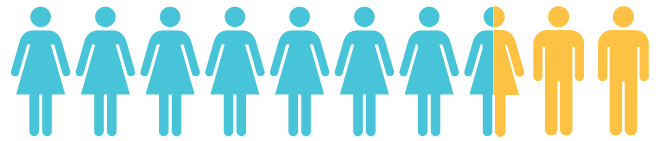
**KEY**

- Raised Catholic
- Converted to Catholicism
- Not Catholic

**KEY**

- Attended Catholic school
- Did not attend Catholic school

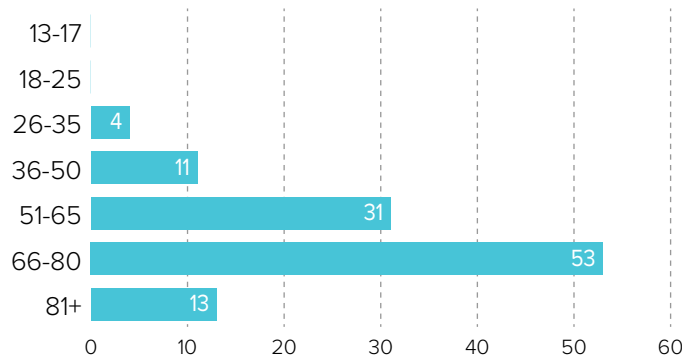
### GENDER



75% WOMEN

25% MEN

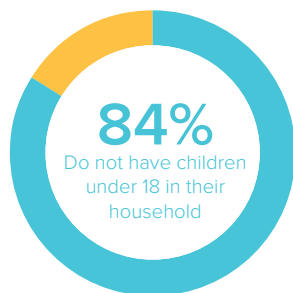
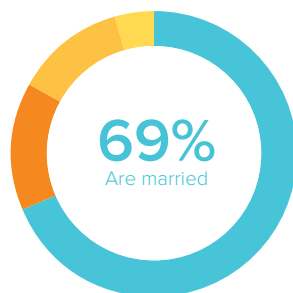
### AGE



### RACIAL OR ETHNIC BACKGROUND

	Count	%
White	108	98.2%
Black	0	0.0%
Hispanic	2	1.8%
Asian	0	0.0%
Native American	0	0.0%
Other	2	3.5%
<b>Total</b>	<b>110</b>	<b>100.0%</b>

### MARITAL STATUS AND CHILDREN IN HOUSEHOLD



**KEY**

- Married or remarried
- Single, never married
- Divorced or separated
- Widowed

**KEY**

- Do not have children
- Have children

### ESTIMATED HOUSEHOLD INCOME

	Count	%
\$19,000 or less	9	9.7%
\$20,000-39,999	26	28.0%
\$40,000-59,999	20	21.5%
\$60,000-79,999	13	14.0%
\$80,000-99,999	12	12.9%
\$100,000 +	13	14.0%
<b>Total</b>	<b>93</b>	<b>100.0%</b>