

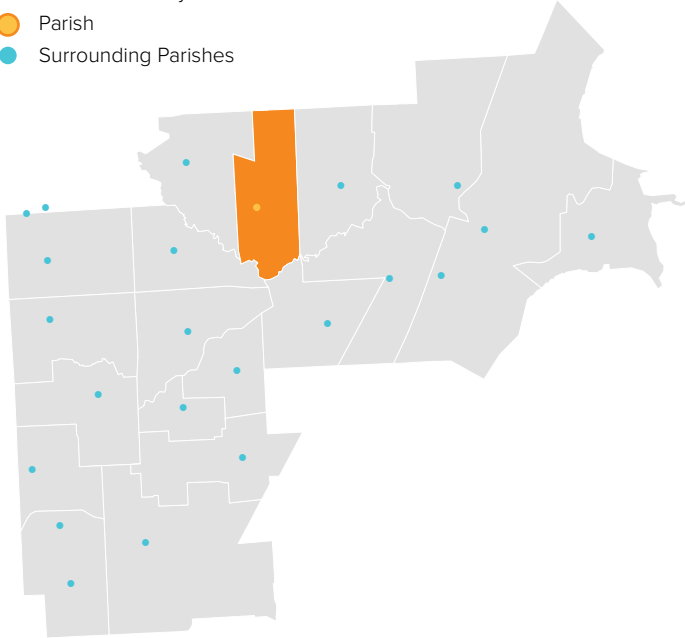
ST. MICHAEL

STERLING HEIGHTS, MI / CENTRAL MACOMB VICARIATE / NORTHEAST REGION

Parish Profile and Survey Results

KEY

- Parish Boundary
- Parish
- Surrounding Parishes



TOTAL SURVEY RESPONSES

Parish ID	Name	responses
599	St. Michael	205

PARISH LOCATION AND BOUNDARY - WITHIN VICARIATE

PARISH CATHOLIC POPULATION FACTS

	2000	2013	% Change
Total Registered Households	3,514	2,831	-19.4%
Total Registered Individuals	10,542	7,927	-24.8%
% of HH in Parish Boundary		48%	
% of HH Outside Parish Boundary		52%	

KEY U.S. CENSUS FACTS

	2000	2010	% Change
Total Households	9,361	10,223	9.2%
Total Population	21,747	22,716	4.5%
Median Household Income	\$54,185	\$52,497	-3.1%
Median Age	39.5	37.7	-4.4%

PARISH FINANCIAL STATS

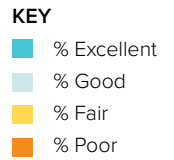
	2009	2013	% Change
Total Operating Income	\$1,267,313	\$1,423,382	12.3%
Total Operating Expenses	\$1,035,083	\$1,038,841	0.4%
LDP Debt	\$-	\$-	0.0%
AOD & MCC Outstanding payables	N/A	\$17,136	N/A
Total Savings	\$486,565	\$1,005,254	106.6%

PARISH SACRAMENTAL STATS (5 YR. TREND)

	2009	2013	% Change
Baptisms	141	118	-16.3%
First Communion	79	60	-24.1%
Confirmations	91	64	-29.7%
Total Marriages	11	16	45.5%
Funerals	138	150	8.7%

ST. MICHAEL

STERLING HEIGHTS, MI / CENTRAL MACOMB VICARIATE / NORTHEAST REGION

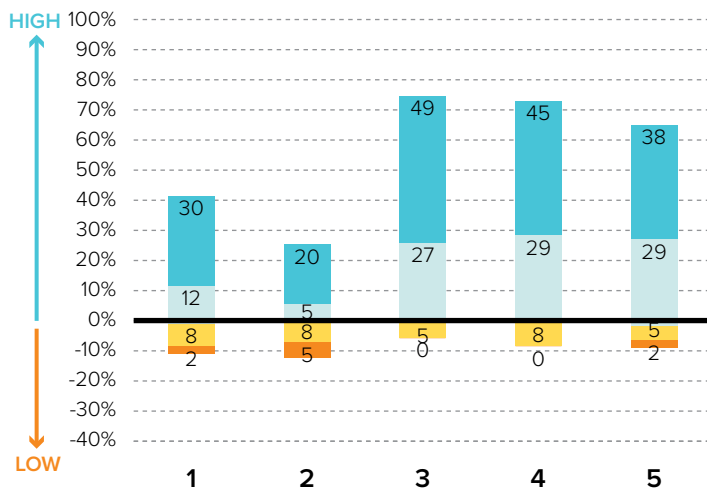


Survey Results Part I: Mission Priorities

The following graphs show how parishioners rated each of the objectives associated with a mission priority area. The graphs are split between positive values for high ratings (“good” or “excellent”) and negative values for lower ratings (“fair” or “poor”). “Don’t know” responses are not shown in the graphs at right to more easily show the split between high and low ratings.

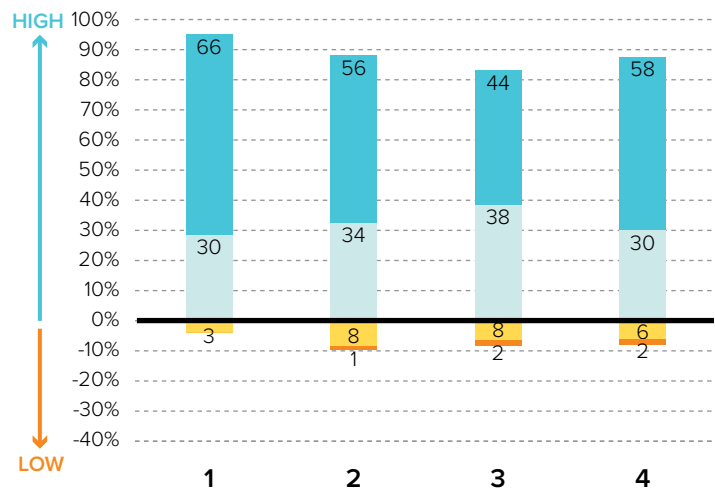
To the best of your ability, please evaluate how well your parish is doing in each of these areas.

PRIORITY AREA: CATHOLIC SCHOOLS



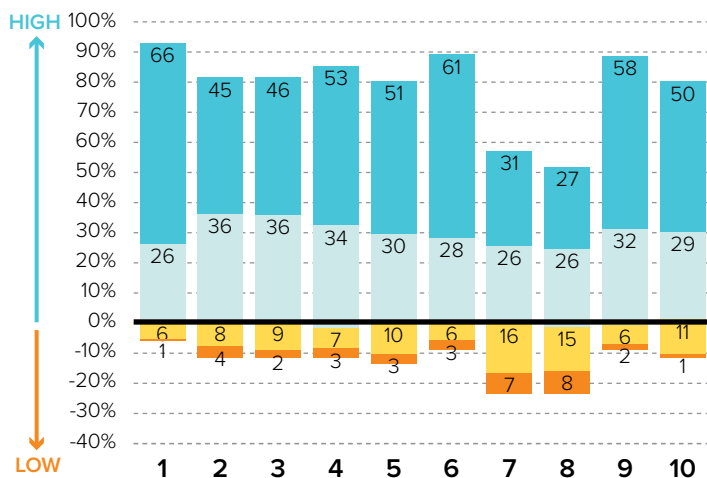
- 1 Ensuring a Catholic education is financially viable
- 2 Keeping tuition affordable to all Catholics
- 3 Maintaining a Catholic identity
- 4 Using technology effectively
- 5 Ensuring academic success and Catholic formation

PRIORITY AREA: CHRISTIAN SERVICE AND OUTREACH



- 1 Christian service projects for the parish community
- 2 Christian service projects for youth and young adults
- 3 Building interfaith relationships
- 4 Collaborating with other community organizations

EVANGELIZATION AND CATECHESIS



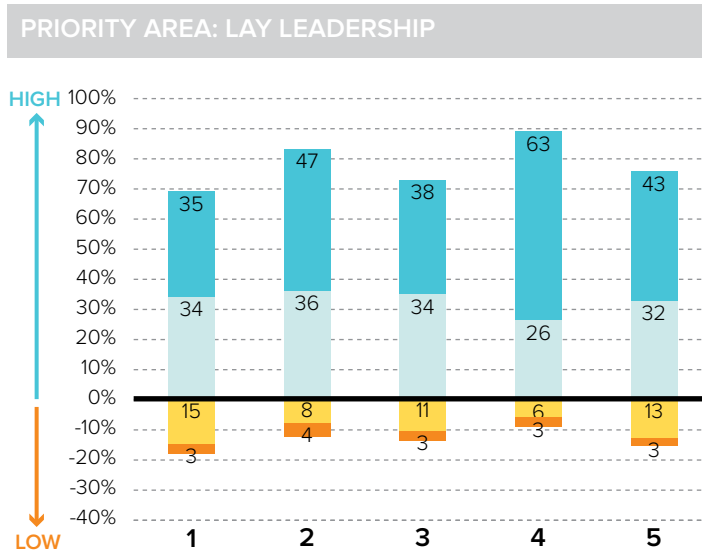
- 1 Explicitly proclaiming the Gospel of Jesus Christ
- 2 Evangelization leadership (committee, minister, etc.)
- 3 Offering ministries to evangelize adults
- 4 Offering ministries for spiritual growth
- 5 Offering programs aimed at parish renewal
- 6 Prayers for healing and spiritual reconciliation
- 7 Reaching out to inactive Catholics
- 8 Reaching out to non-Catholics
- 9 Providing adult faith formation and catechesis
- 10 Strengthening religious education

ST. MICHAEL

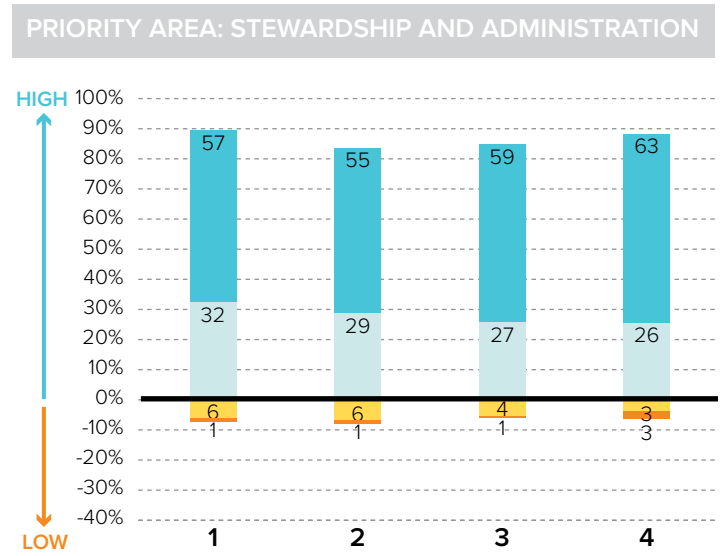
STERLING HEIGHTS, MI / CENTRAL MACOMB VICARIATE / NORTHEAST REGION

KEY
■ % Excellent
■ % Good
■ % Fair
■ % Poor

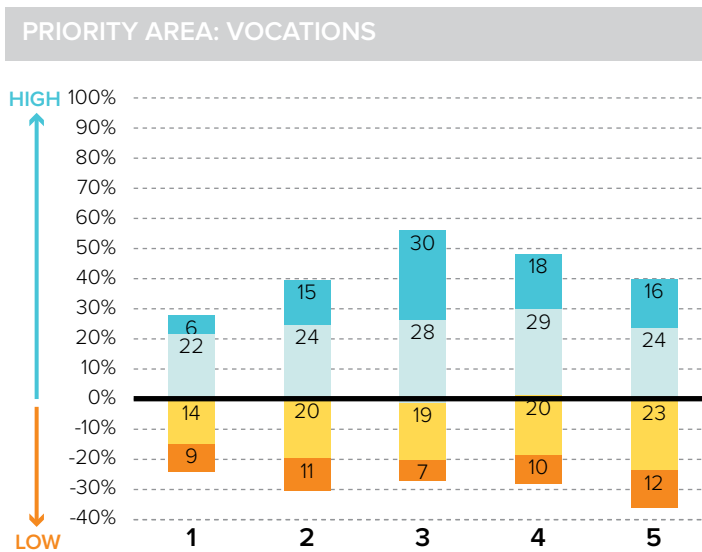
Survey Results Part I: Mission Priorities



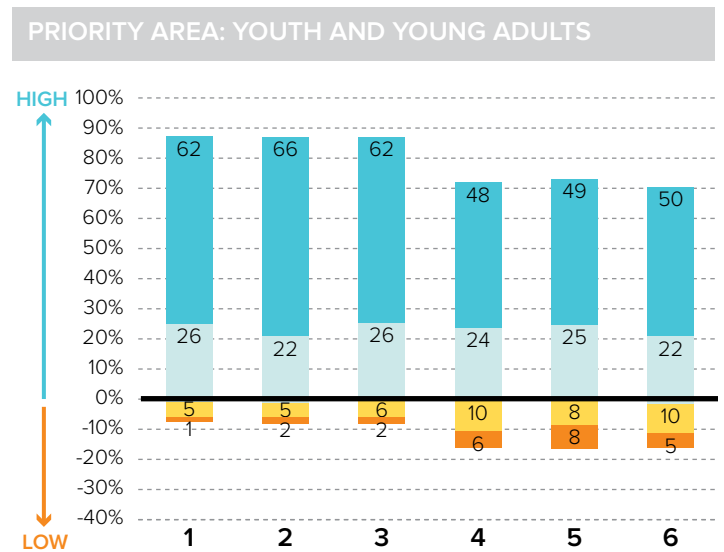
- 1 Training parishioners to identify their spiritual gifts
- 2 Increasing opportunities for lay involvement
- 3 Training and ministry for lay leaders
- 4 Encouraging parishioners to volunteer
- 5 Providing training opportunities for volunteers



- 1 Communicating stewardship as a way of life
- 2 Forming an active Stewardship Commission
- 3 Supporting an active Finance Council
- 4 Financial transparency/accountability



- 1 Forming a vocations committee
- 2 Promoting vocations to priesthood/religious life
- 3 Promoting prayer for vocations
- 4 Inviting young people to consider Church vocations
- 5 Teaching vocation awareness



- 1 Providing regular meetings for teens
- 2 Providing special events for teens (e.g. retreats)
- 3 Engaging youth in parish life and liturgies
- 4 Providing regular meetings for young adults
- 5 Hosting special events for young adults
- 6 Engaging young adults in parish ministries and outreaches

ST. MICHAEL

STERLING HEIGHTS, MI / CENTRAL MACOMB VICARIATE / NORTHEAST REGION

Survey Results Part II: Faith and Parish Life

YEARS AT CURRENT PARISH

How many years have you attended Mass at your current parish?

	Count	%
Less than 1 year	5	3.3%
1-5 years	18	11.9%
6-10 years	20	13.2%
11-20 years	33	21.9%
21-30 years	43	28.5%
31+ years	32	21.2%
Total	151	100.0%

MASS ATTENDANCE

How often do you attend Mass?



REASONS TO MISS MASS

If you do not attend Mass regularly on Sundays, how much does each of the following explain why? % "somewhat" or "very"

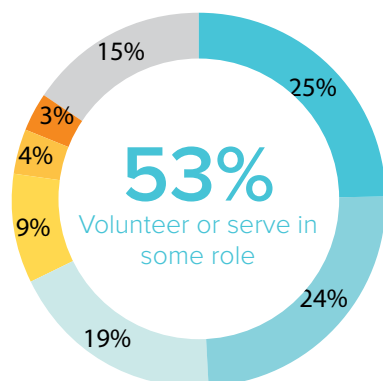
Demands of work, school, or sports	29.2%
Family concerns and needs	21.9%
Masses are boring/irrelevant to me	11.1%
The parish is not welcoming	7.9%
Health problems or a disability	7.8%
Clusters, mergers, and closures of parishes	6.5%
The pastor is not welcoming	4.8%
Lack of children's ministries	1.6%
Divorce or marriage outside of Church	0.0%

REGISTRATION

Are you a registered member at your current parish?



INVOLVEMENT IN THE PARISH



Do you serve, or have you ever served in any of the following roles in your parish?

KEY

- Volunteer (e.g. catechist, Vacation Bible School)
- Liturgical ministries (e.g. usher, Eucharistic Minister, lector)
- Member of a parish council, commission, or committee
- Music ministries (e.g. choir, musician, director)
- Parish support staff (e.g. secretary, maintenance)
- Parish staff (e.g. youth minister, business manager, DRE)
- None of the above

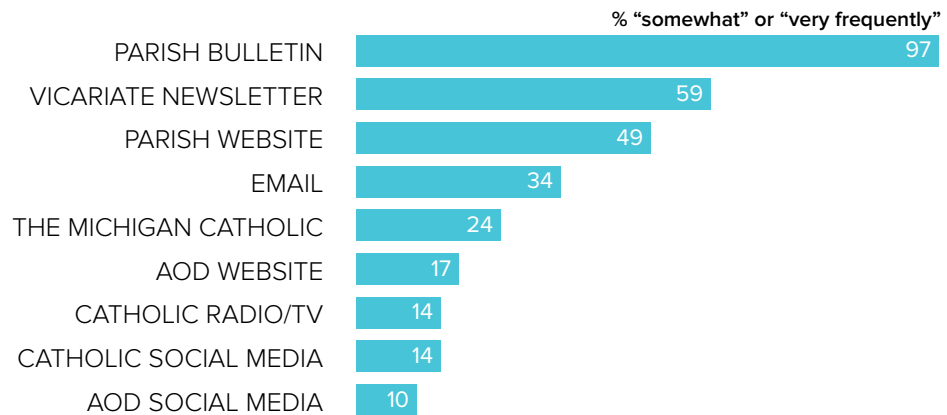
ST. MICHAEL

STERLING HEIGHTS, MI / CENTRAL MACOMB VICARIATE / NORTHEAST REGION

Survey Results Part II: Faith and Parish Life

COMMUNICATION METHODS

How often do you rely on the following for information about your parish, the Archdiocese, or the Catholic Church?



PARISH CHARACTERISTICS

How important to you are these characteristics in a parish?

	% "very important"		% "very important"
Quality worship service	90.5%	Traditional music	33.6%
Parish embraces Church teachings and values	70.7%	Opportunities for penance/confession	25.3%
Daily and weekend Mass schedules	67.3%	Devotions (rosary, adoration, etc.)	22.8%
Children's ministries (for all age groups)	57.2%	Catholic school	16.1%
Service activities	47.9%	Mass in language(s) other than English	3.5%
Parish social groups/gatherings	41.1%		
Contemporary music	40.8%		
Small group ministries (e.g. Bible Study)	34.9%		

PASTOR CHARACTERISTICS

How important to you are these characteristics in a pastor?

	% "very important"
Welcoming spirit	95.3%
Ability to connect scripture to the present	90.7%
Engaging preaching style	87.9%
Manages parish resources effectively	83.6%
Invites people into a personal relationship w/ Jesus	81.3%
Values input from laity	77.7%
Communicates parish priorities	76.4%
Challenges people to live a life of discipleship	74.1%

CHALLENGES FACING THE CHURCH

How would you rate the following as challenges facing the Catholic Church in Southeast Michigan today?

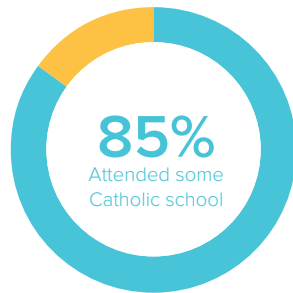
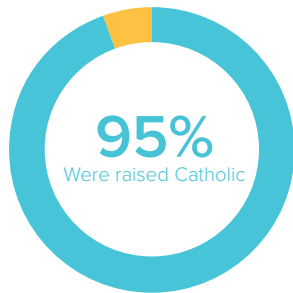
	% "serious challenge"
TOP 5 RESPONSES	
Shortage of priests/decline in vocations	88.4%
Engaging teens and young adults in parish life	63.4%
Priest sexual abuse	62.6%
Clustering, merging, and closing of parishes	62.6%
Church funds/financial management	59.9%

ST. MICHAEL

STERLING HEIGHTS, MI / CENTRAL MACOMB VICARIATE / NORTHEAST REGION

Survey Results Part III: Demographics

CATHOLIC BACKGROUND AND EDUCATION



KEY

- Raised Catholic
- Converted to Catholicism
- Not Catholic

KEY

- Attended Catholic school
- Did not attend Catholic school

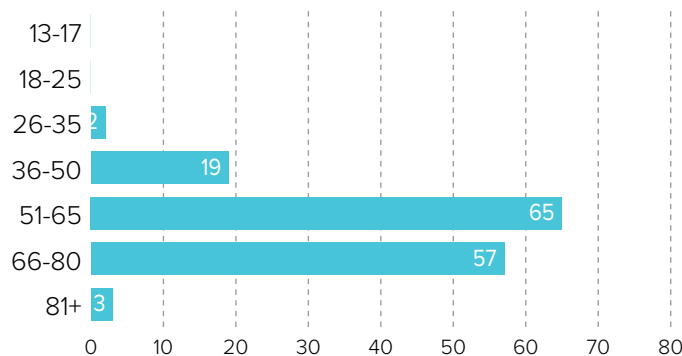
GENDER



59% WOMEN

41% MEN

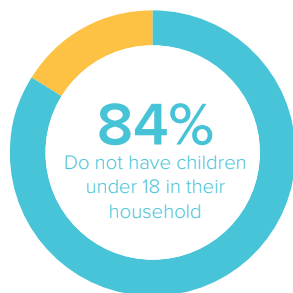
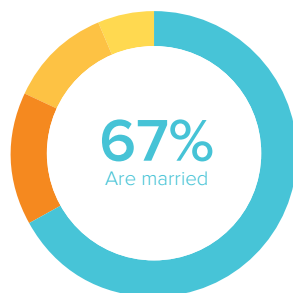
AGE



RACIAL OR ETHNIC BACKGROUND

	Count	%
White	138	96.5%
Black	0	0.0%
Hispanic	3	2.1%
Asian	2	4.0%
Native American	0	0.0%
Other	0	0.0%
Total	143	100.0%

MARITAL STATUS AND CHILDREN IN HOUSEHOLD



KEY

- Married or remarried
- Widowed
- Divorced or separated
- Single, never married

KEY

- Do not have children
- Have children

ESTIMATED HOUSEHOLD INCOME

	Count	%
\$19,000 or less	6	4.7%
\$20,000-39,999	16	12.5%
\$40,000-59,999	31	24.2%
\$60,000-79,999	26	20.3%
\$80,000-99,999	23	18.0%
\$100,000 +	26	20.3%
Total	128	100.0%