

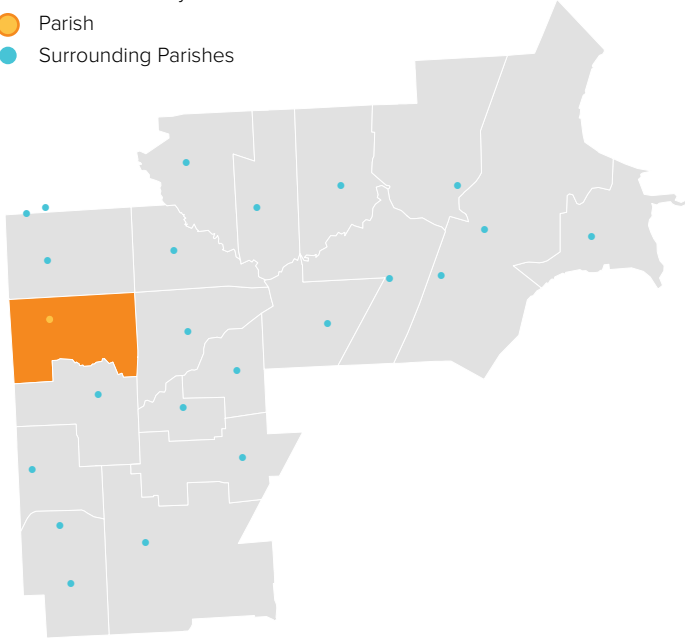
ST. RENE GOUPIL

STERLING HEIGHTS, MI / CENTRAL MACOMB VICARIATE / NORTHEAST REGION

Parish Profile and Survey Results

KEY

- Parish Boundary
- Parish
- Surrounding Parishes



TOTAL SURVEY RESPONSES

Parish ID	Name	responses
737	St. Rene Goupil	147

PARISH LOCATION AND BOUNDARY - WITHIN VICARIATE

PARISH CATHOLIC POPULATION FACTS

	2000	2013	% Change
Total Registered Households	3,113	1,555	-50.0%
Total Registered Individuals	9,339	4,354	-53.4%
% of HH in Parish Boundary		36%	
% of HH Outside Parish Boundary		64%	

KEY U.S. CENSUS FACTS

	2000	2010	% Change
Total Households	7,193	7,914	10.0%
Total Population	19,009	19,915	4.8%
Median Household Income	\$55,940	\$53,234	-4.8%
Median Age	33.3	33.0	-1.1%

PARISH FINANCIAL STATS

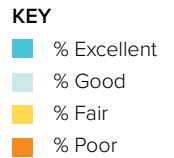
	2009	2013	% Change
Total Operating Income	\$824,984	\$935,095	13.3%
Total Operating Expenses	\$687,624	\$751,927	9.4%
LDP Debt	\$673,478	\$306,865	-54.4%
AOD & MCC	N/A	\$84,701	N/A
Outstanding payables			
Total Savings	\$345,763	\$885,854	156.2%

PARISH SACRAMENTAL STATS (5 YR. TREND)

	2009	2013	% Change
Baptisms	35	20	-42.9%
First Communion	44	26	-40.9%
Confirmations	20	31	55.0%
Total Marriages	7	3	-57.1%
Funerals	33	49	48.5%

ST. RENE GOUPIL

STERLING HEIGHTS, MI / CENTRAL MACOMB VICARIATE / NORTHEAST REGION

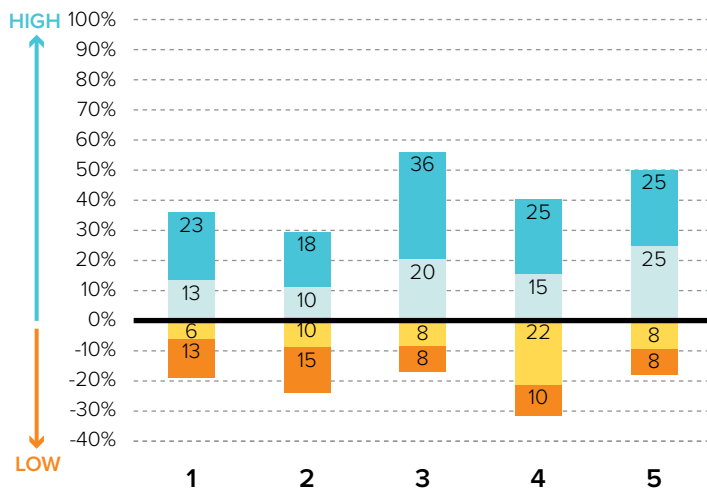


Survey Results Part I: Mission Priorities

The following graphs show how parishioners rated each of the objectives associated with a mission priority area. The graphs are split between positive values for high ratings (“good” or “excellent”) and negative values for lower ratings (“fair” or “poor”). “Don’t know” responses are not shown in the graphs at right to more easily show the split between high and low ratings.

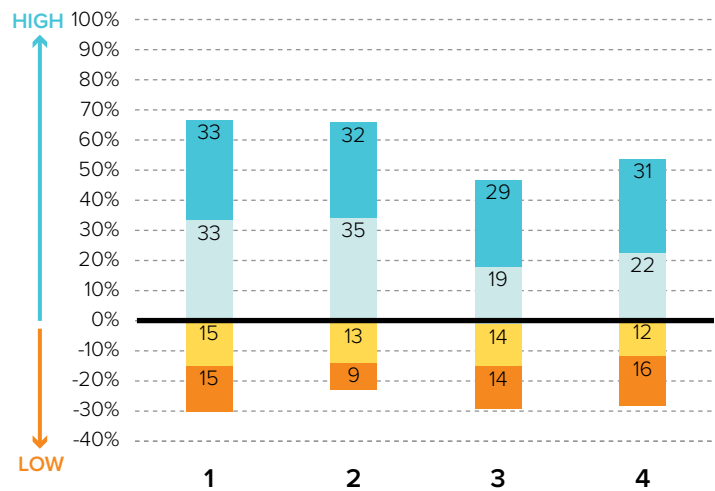
To the best of your ability, please evaluate how well your parish is doing in each of these areas.

PRIORITY AREA: CATHOLIC SCHOOLS



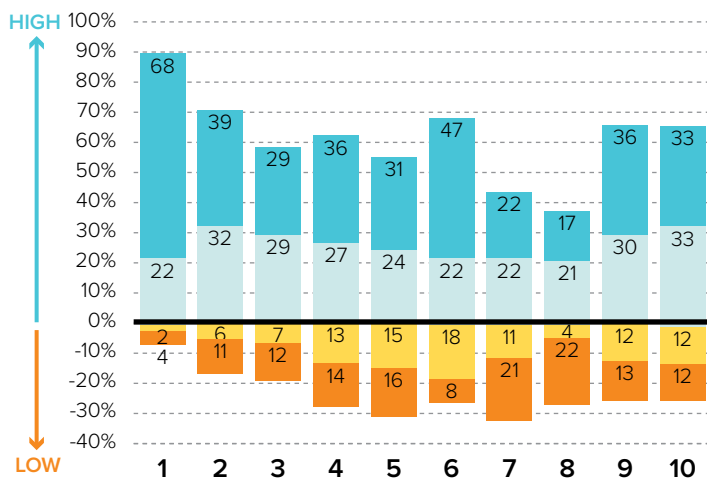
- 1 Ensuring a Catholic education is financially viable
- 2 Keeping tuition affordable to all Catholics
- 3 Maintaining a Catholic identity
- 4 Using technology effectively
- 5 Ensuring academic success and Catholic formation

PRIORITY AREA: CHRISTIAN SERVICE AND OUTREACH



- 1 Christian service projects for the parish community
- 2 Christian service projects for youth and young adults
- 3 Building interfaith relationships
- 4 Collaborating with other community organizations

EVANGELIZATION AND CATECHESIS



- 1 Explicitly proclaiming the Gospel of Jesus Christ
- 2 Evangelization leadership (committee, minister, etc.)
- 3 Offering ministries to evangelize adults
- 4 Offering ministries for spiritual growth
- 5 Offering programs aimed at parish renewal
- 6 Prayers for healing and spiritual reconciliation
- 7 Reaching out to inactive Catholics
- 8 Reaching out to non-Catholics
- 9 Providing adult faith formation and catechesis
- 10 Strengthening religious education

ST. RENE GOUPIL

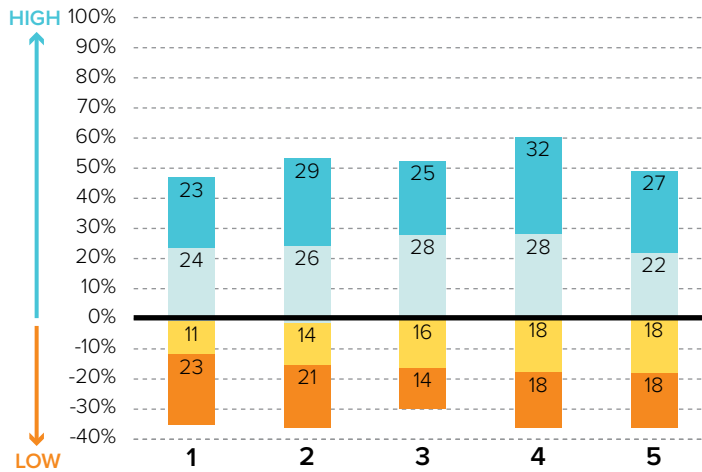
STERLING HEIGHTS, MI / CENTRAL MACOMB VICARIATE / NORTHEAST REGION

KEY

- % Excellent
- % Good
- % Fair
- % Poor

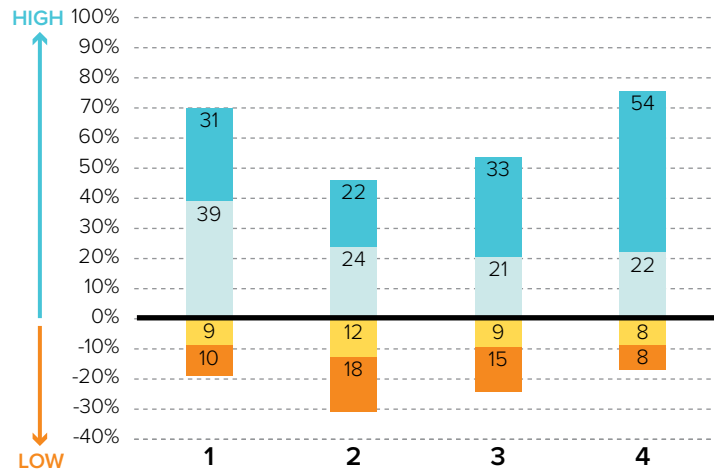
Survey Results Part I: Mission Priorities

PRIORITY AREA: LAY LEADERSHIP



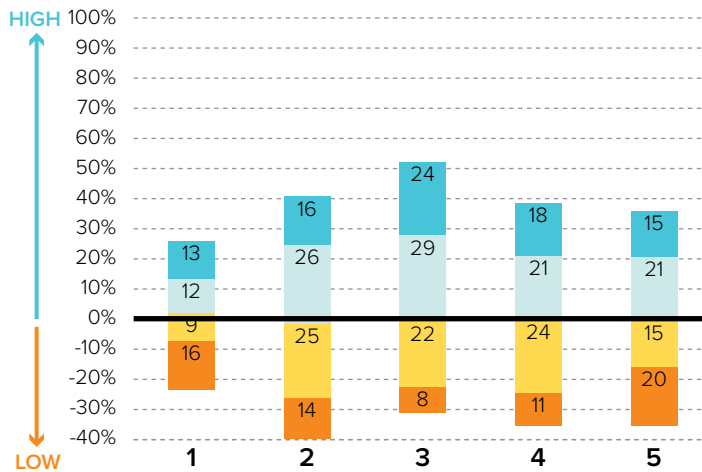
- 1 Training parishioners to identify their spiritual gifts
- 2 Increasing opportunities for lay involvement
- 3 Training and ministry for lay leaders
- 4 Encouraging parishioners to volunteer
- 5 Providing training opportunities for volunteers

PRIORITY AREA: STEWARDSHIP AND ADMINISTRATION



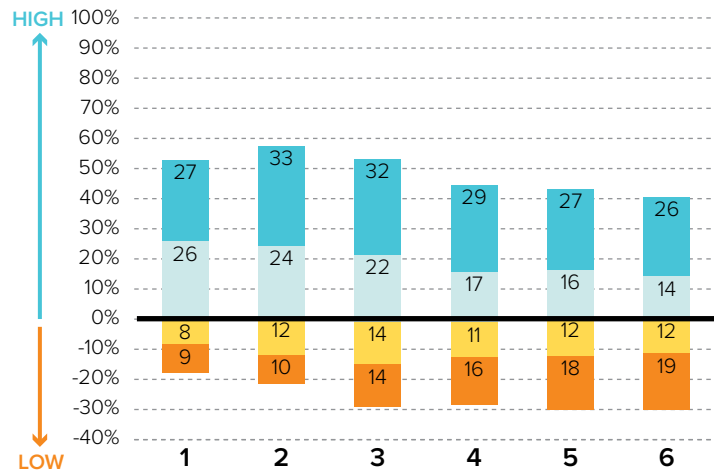
- 1 Communicating stewardship as a way of life
- 2 Forming an active Stewardship Commission
- 3 Supporting an active Finance Council
- 4 Financial transparency/accountability

PRIORITY AREA: VOCATIONS



- 1 Forming a vocations committee
- 2 Promoting vocations to priesthood/religious life
- 3 Promoting prayer for vocations
- 4 Inviting young people to consider Church vocations
- 5 Teaching vocation awareness

PRIORITY AREA: YOUTH AND YOUNG ADULTS



- 1 Providing regular meetings for teens
- 2 Providing special events for teens (e.g. retreats)
- 3 Engaging youth in parish life and liturgies
- 4 Providing regular meetings for young adults
- 5 Hosting special events for young adults
- 6 Engaging young adults in parish ministries and outreaches

ST. RENE GOUPIL

STERLING HEIGHTS, MI / CENTRAL MACOMB VICARIATE / NORTHEAST REGION

Survey Results Part II: Faith and Parish Life

YEARS AT CURRENT PARISH

How many years have you attended Mass at your current parish?

	Count	%
Less than 1 year	2	2.3%
1-5 years	10	11.5%
6-10 years	19	21.8%
11-20 years	15	17.2%
21-30 years	16	18.4%
31+ years	25	28.7%
Total	87	100.0%

MASS ATTENDANCE

How often do you attend Mass?



REASONS TO MISS MASS

If you do not attend Mass regularly on Sundays, how much does each of the following explain why? % "somewhat" or "very"

Family concerns and needs	17.6%
Health problems or a disability	15.7%
Demands of work, school, or sports	15.0%
Lack of children's ministries	11.8%
The parish is not welcoming	7.8%
The pastor is not welcoming	7.8%
Divorce or marriage outside of Church	6.0%
Clusters, mergers, and closures of parishes	6.0%
Masses are boring/irrelevant to me	5.9%

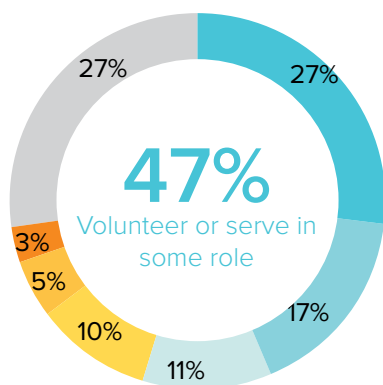
REGISTRATION

Are you a registered member at your current parish?



INVOLVEMENT IN THE PARISH

Do you serve, or have you ever served in any of the following roles in your parish?



KEY

- Volunteer (e.g. catechist, Vacation Bible School)
- Liturgical ministries (e.g. usher, Eucharistic Minister, lector)
- Music ministries (e.g. choir, musician, director)
- Member of a parish council, commission, or committee
- Parish support staff (e.g. secretary, maintenance)
- Parish staff (e.g. youth minister, business manager, DRE)
- None of the above

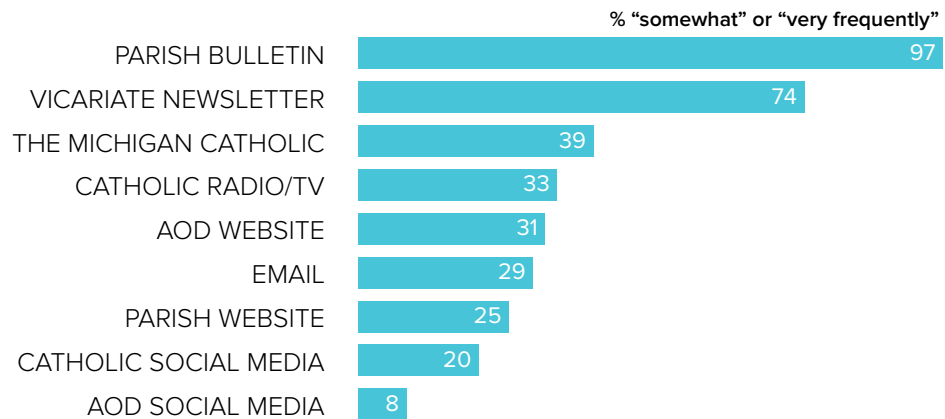
ST. RENE GOUPIL

STERLING HEIGHTS, MI / CENTRAL MACOMB VICARIATE / NORTHEAST REGION

Survey Results Part II: Faith and Parish Life

COMMUNICATION METHODS

How often do you rely on the following for information about your parish, the Archdiocese, or the Catholic Church?



PARISH CHARACTERISTICS

How important to you are these characteristics in a parish?

	% "very important"		% "very important"
Quality worship service	94.2%	Service activities	41.6%
Parish embraces Church teachings and values	87.9%	Catholic school	36.4%
Daily and weekend Mass schedules	76.7%	Small group ministries (e.g. Bible Study)	35.1%
Children's ministries (for all age groups)	62.6%	Contemporary music	31.9%
Devotions (rosary, adoration, etc.)	56.6%	Mass in language(s) other than English	9.8%
Traditional music	51.7%		
Opportunities for penance/confession	45.9%		
Parish social groups/gatherings	44.4%		

PASTOR CHARACTERISTICS

How important to you are these characteristics in a pastor?

	% "very important"
Welcoming spirit	89.4%
Invites people into a personal relationship w/ Jesus	86.2%
Ability to connect scripture to the present	85.3%
Engaging preaching style	82.6%
Communicates parish priorities	81.0%
Manages parish resources effectively	80.2%
Values input from laity	75.9%
Challenges people to live a life of discipleship	75.7%

CHALLENGES FACING THE CHURCH

How would you rate the following as challenges facing the Catholic Church in Southeast Michigan today?

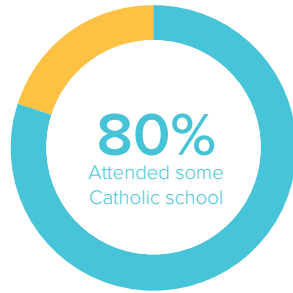
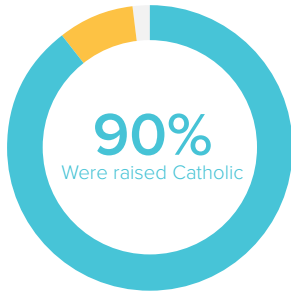
	% "serious challenge"
TOP 5 RESPONSES	
The Church has not changed enough	17.1%
The Church has changed too much	18.9%
Church leaders are out of touch with laity	38.6%
Priest sexual abuse	50.0%
Disconnect between Church teachings and popular culture	54.9%

ST. RENE GOUPIL

STERLING HEIGHTS, MI / CENTRAL MACOMB VICARIATE / NORTHEAST REGION

Survey Results Part III: Demographics

CATHOLIC BACKGROUND AND EDUCATION



KEY

- Raised Catholic
- Converted to Catholicism
- Not Catholic

KEY

- Attended Catholic school
- Did not attend Catholic school

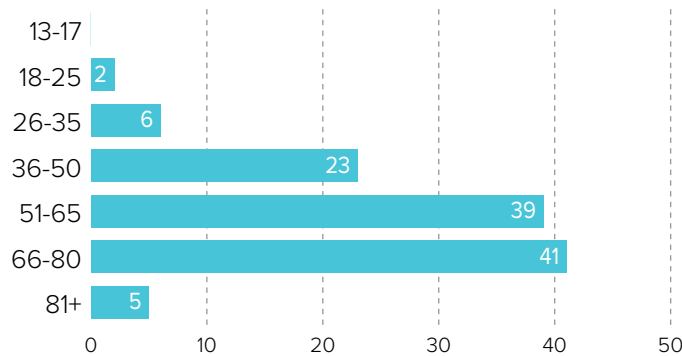
GENDER



61% WOMEN

39% MEN

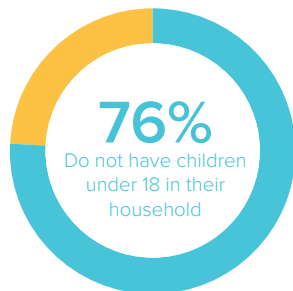
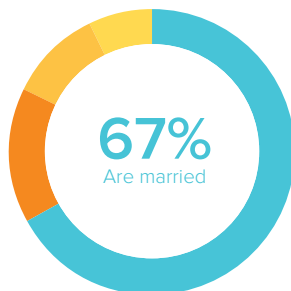
AGE



RACIAL OR ETHNIC BACKGROUND

	Count	%
White	105	92.1%
Black	0	0.0%
Hispanic	2	1.8%
Asian	6	5.3%
Native American	0	0.0%
Other	1	0.9%
Total	114	100.0%

MARITAL STATUS AND CHILDREN IN HOUSEHOLD



KEY

- Married or remarried
- Single, never married
- Widowed
- Divorced or separated

KEY

- Do not have children
- Have children

ESTIMATED HOUSEHOLD INCOME

	Count	%
\$19,000 or less	7	7.1%
\$20,000-39,999	19	19.4%
\$40,000-59,999	22	22.4%
\$60,000-79,999	17	17.3%
\$80,000-99,999	14	14.3%
\$100,000 +	19	19.4%
Total	98	100.0%