

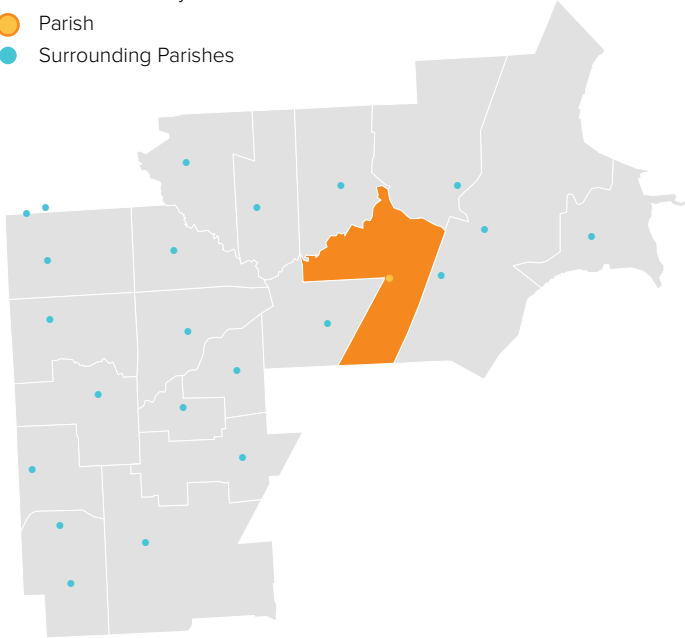
# ST. THECLA

CLINTON TOWNSHIP, MI / CENTRAL MACOMB VICARIATE / NORTHEAST REGION

## Parish Profile and Survey Results

### KEY

- Parish Boundary
- Parish
- Surrounding Parishes



### TOTAL SURVEY RESPONSES

Parish ID	Name	responses
800	St. Thecla	238

### PARISH LOCATION AND BOUNDARY - WITHIN VICARIATE

#### PARISH CATHOLIC POPULATION FACTS

	2000	2013	% Change
Total Registered Households	2,300	2,052	-10.8%
Total Registered Individuals	6,900	5,746	-16.7%
% of HH in Parish Boundary		46%	
% of HH Outside Parish Boundary		54%	

#### KEY U.S. CENSUS FACTS

	2000	2010	% Change
Total Households	10,693	9,712	-9.2%
Total Population	26,292	25,298	-3.8%
Median Household Income	\$55,637	\$52,191	-6.2%
Median Age	34.6	34.7	0.0%

#### PARISH FINANCIAL STATS

	08-09	12-13	% Change
Total Operating Income	\$1,244,729	\$1,220,405	-2.0%
Total Operating Expenses	\$1,177,719	\$1,246,593	5.8%
LDP Debt	\$-	\$-	0.0%
AOD & MCC	N/A	\$133	N/A
Outstanding payables			
Total Savings	\$422,340	\$540,535	28.0%

#### PARISH SACRAMENTAL STATS (5 YR. TREND)

	2008	2013	% Change
Baptisms	45	24	-46.7%
First Communion	71	45	-36.6%
Confirmations	79	70	-11.4%
Total Marriages	14	2	-85.7%
Funerals	49	66	34.7%

# ST. THECLA

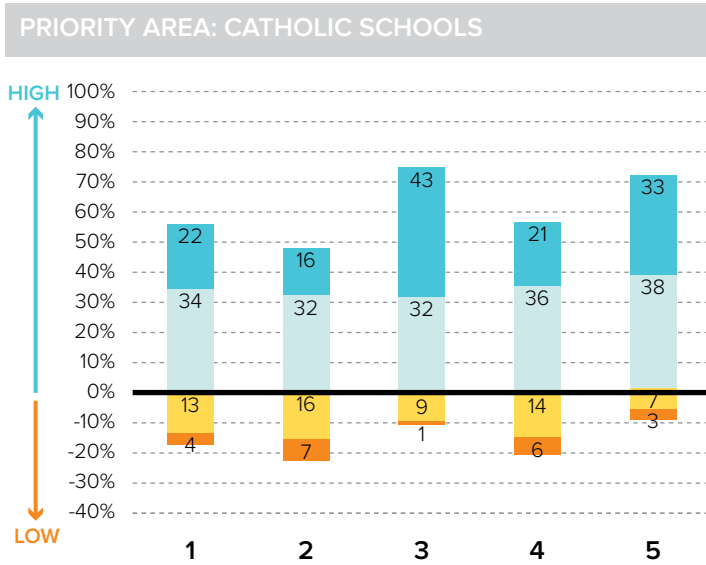
CLINTON TOWNSHIP, MI / CENTRAL MACOMB VICARIATE / NORTHEAST REGION

**KEY**  
 % Excellent  
 % Good  
 % Fair  
 % Poor

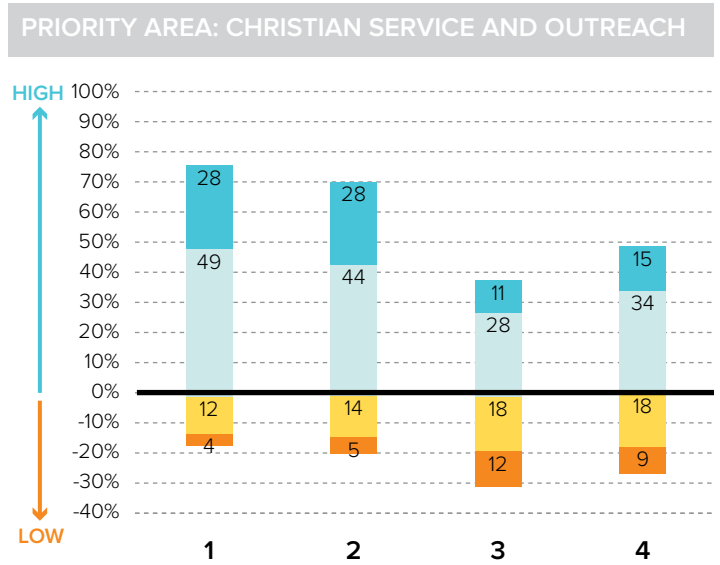
## Survey Results Part I: Mission Priorities

The following graphs show how parishioners rated each of the objectives associated with a mission priority area. The graphs are split between positive values for high ratings (“good” or “excellent”) and negative values for lower ratings (“fair” or “poor”). “Don’t know” responses are not shown in the graphs at right to more easily show the split between high and low ratings.

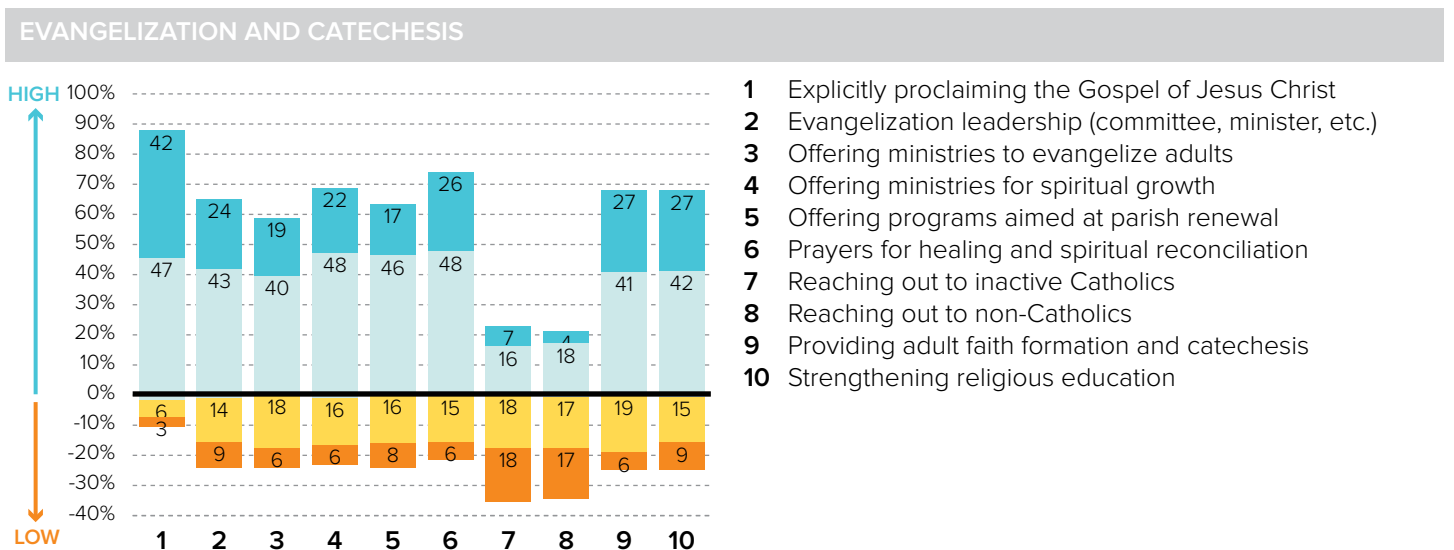
To the best of your ability, please evaluate how well your parish is doing in each of these areas.



- 1 Ensuring a Catholic education is financially viable
- 2 Keeping tuition affordable to all Catholics
- 3 Maintaining a Catholic identity
- 4 Using technology effectively
- 5 Ensuring academic success and Catholic formation



- 1 Christian service projects for the parish community
- 2 Christian service projects for youth and young adults
- 3 Building interfaith relationships
- 4 Collaborating with other community organizations



- 1 Explicitly proclaiming the Gospel of Jesus Christ
- 2 Evangelization leadership (committee, minister, etc.)
- 3 Offering ministries to evangelize adults
- 4 Offering ministries for spiritual growth
- 5 Offering programs aimed at parish renewal
- 6 Prayers for healing and spiritual reconciliation
- 7 Reaching out to inactive Catholics
- 8 Reaching out to non-Catholics
- 9 Providing adult faith formation and catechesis
- 10 Strengthening religious education

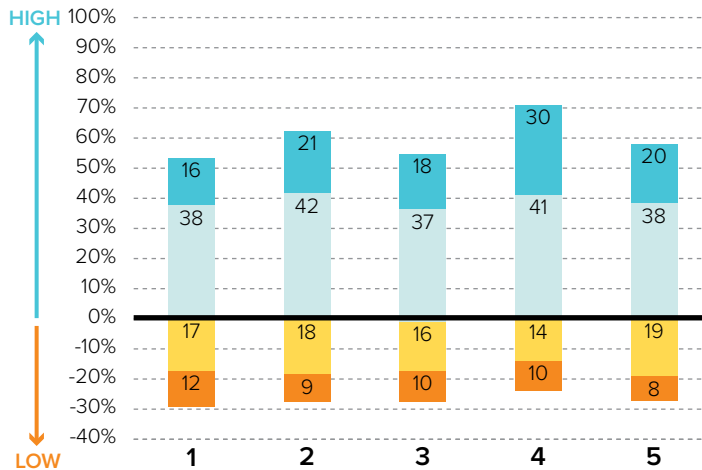
# ST. THECLA

CLINTON TOWNSHIP, MI / CENTRAL MACOMB VICARIATE / NORTHEAST REGION

**KEY**  
■ % Excellent  
■ % Good  
■ % Fair  
■ % Poor

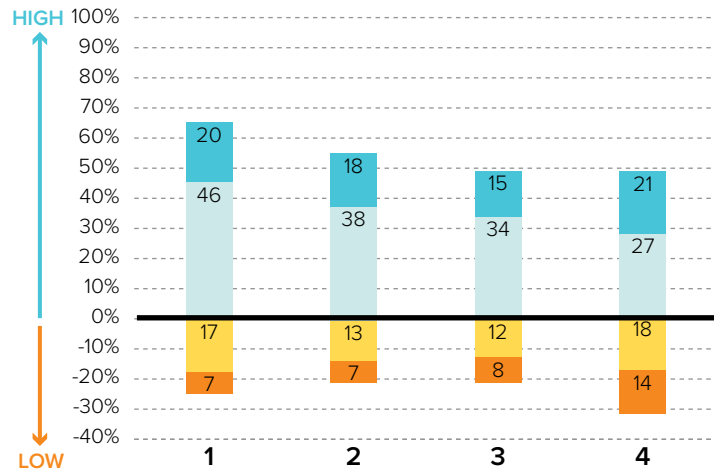
## Survey Results Part I: Mission Priorities

### PRIORITY AREA: LAY LEADERSHIP



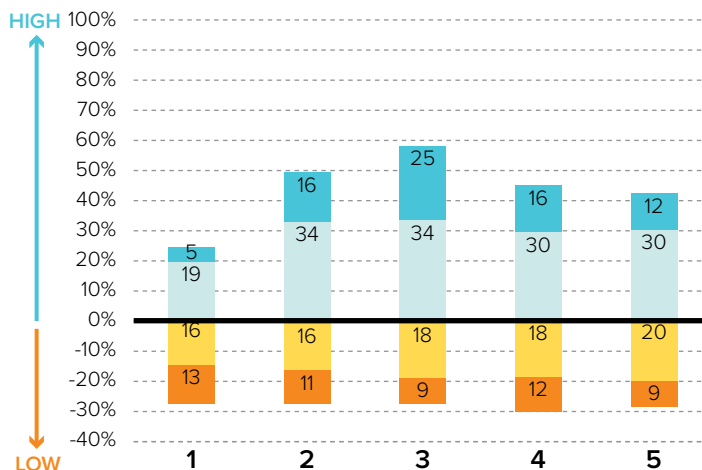
- 1 Training parishioners to identify their spiritual gifts
- 2 Increasing opportunities for lay involvement
- 3 Training and ministry for lay leaders
- 4 Encouraging parishioners to volunteer
- 5 Providing training opportunities for volunteers

### PRIORITY AREA: STEWARDSHIP AND ADMINISTRATION



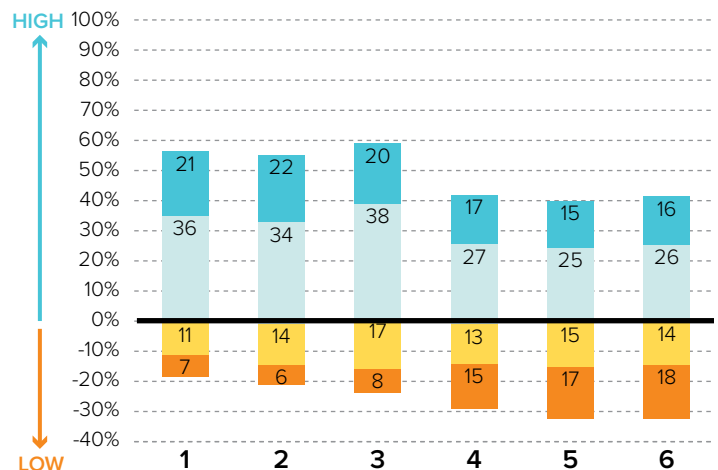
- 1 Communicating stewardship as a way of life
- 2 Forming an active Stewardship Commission
- 3 Supporting an active Finance Council
- 4 Financial transparency/accountability

### PRIORITY AREA: VOCATIONS



- 1 Forming a vocations committee
- 2 Promoting vocations to priesthood/religious life
- 3 Promoting prayer for vocations
- 4 Inviting young people to consider Church vocations
- 5 Teaching vocation awareness

### PRIORITY AREA: YOUTH AND YOUNG ADULTS



- 1 Providing regular meetings for teens
- 2 Providing special events for teens (e.g. retreats)
- 3 Engaging youth in parish life and liturgies
- 4 Providing regular meetings for young adults
- 5 Hosting special events for young adults
- 6 Engaging young adults in parish ministries and outreaches

# ST. THECLA

CLINTON TOWNSHIP, MI / CENTRAL MACOMB VICARIATE / NORTHEAST REGION

## Survey Results Part II: Faith and Parish Life

### YEARS AT CURRENT PARISH

How many years have you attended Mass at your current parish?

	Count	%
Less than 1 year	4	2.3%
1-5 years	22	12.9%
6-10 years	32	18.7%
11-20 years	36	21.1%
21-30 years	38	22.2%
31+ years	39	22.8%
Total	171	100.0%

### MASS ATTENDANCE

How often do you attend Mass?



### REASONS TO MISS MASS

If you do not attend Mass regularly on Sundays, how much does each of the following explain why? % "somewhat" or "very"

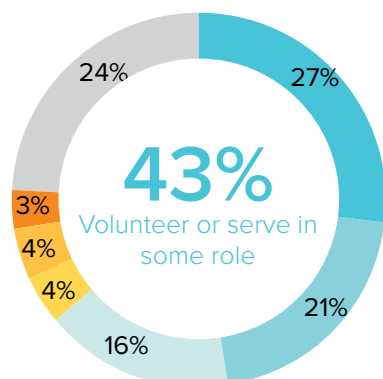
Demands of work, school, or sports	36.1%
Family concerns and needs	26.6%
The parish is not welcoming	10.3%
The pastor is not welcoming	9.3%
Masses are boring/irrelevant to me	8.3%
Health problems or a disability	5.1%
Lack of children's ministries	4.2%
Clusters, mergers, and closures of parishes	4.2%
Divorce or marriage outside of Church	2.1%

### REGISTRATION

Are you a registered member at your current parish?



### INVOLVEMENT IN THE PARISH



Do you serve, or have you ever served in any of the following roles in your parish?

#### KEY

- Volunteer (e.g. catechist, Vacation Bible School)
- Liturgical ministries (e.g. usher, Eucharistic Minister, lector)
- Member of a parish council, commission, or committee
- Music ministries (e.g. choir, musician, director)
- Parish support staff (e.g. secretary, maintenance)
- Parish staff (e.g. youth minister, business manager, DRE)
- None of the above

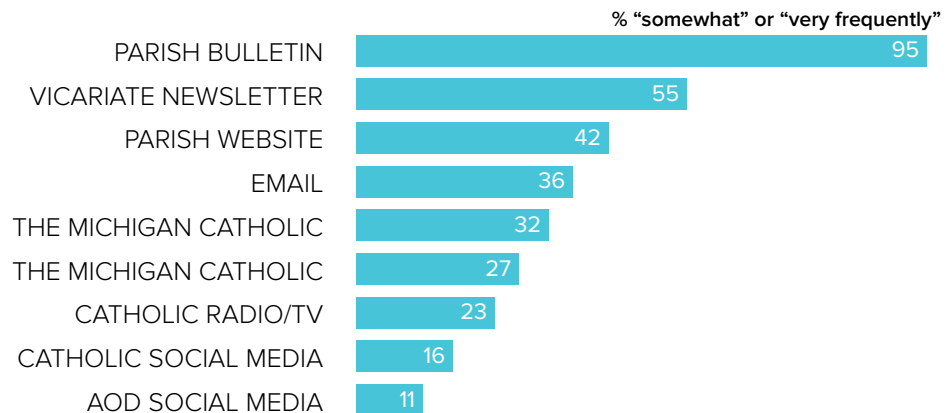
# ST. THECLA

CLINTON TOWNSHIP, MI / CENTRAL MACOMB VICARIATE / NORTHEAST REGION

## Survey Results Part II: Faith and Parish Life

### COMMUNICATION METHODS

How often do you rely on the following for information about your parish, the Archdiocese, or the Catholic Church?



### PARISH CHARACTERISTICS

How important to you are these characteristics in a parish?

	% "very important"		% "very important"
Quality worship service	87.3%	Parish social groups/gatherings	36.2%
Daily and weekend Mass schedules	74.4%	Small group ministries (e.g. Bible Study)	31.1%
Parish embraces Church teachings and values	74.1%	Opportunities for penance/confession	30.8%
Catholic school	69.5%	Contemporary music	21.6%
Children's ministries (for all age groups)	45.7%	Mass in language(s) other than English	.6%
Service activities	38.9%		
Devotions (rosary, adoration, etc.)	37.8%		
Traditional music	37.3%		

### PASTOR CHARACTERISTICS

How important to you are these characteristics in a pastor?

	% "very important"
Welcoming spirit	94.5%
Ability to connect scripture to the present	91.0%
Invites people into a personal relationship w/ Jesus	88.0%
Engaging preaching style	86.1%
Manages parish resources effectively	84.8%
Communicates parish priorities	77.1%
Values input from laity	74.1%
Challenges people to live a life of discipleship	69.8%

### CHALLENGES FACING THE CHURCH

How would you rate the following as challenges facing the Catholic Church in Southeast Michigan today?

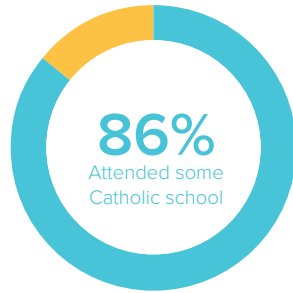
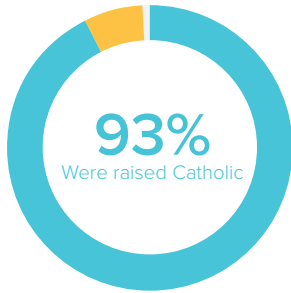
	% "serious challenge"
<b>TOP 5 RESPONSES</b>	
Shortage of priests/decline in vocations	77.9%
Engaging teens and young adults in parish life	63.4%
Society in general is less religious	61.3%
Church funds/financial management	57.1%
Lack of participation in the sacraments	53.7%

# ST. THECLA

CLINTON TOWNSHIP, MI / CENTRAL MACOMB VICARIATE / NORTHEAST REGION

## Survey Results Part III: Demographics

### CATHOLIC BACKGROUND AND EDUCATION



- KEY**
- Raised Catholic
  - Converted to Catholicism
  - Not Catholic

- KEY**
- Attended Catholic school
  - Did not attend Catholic school

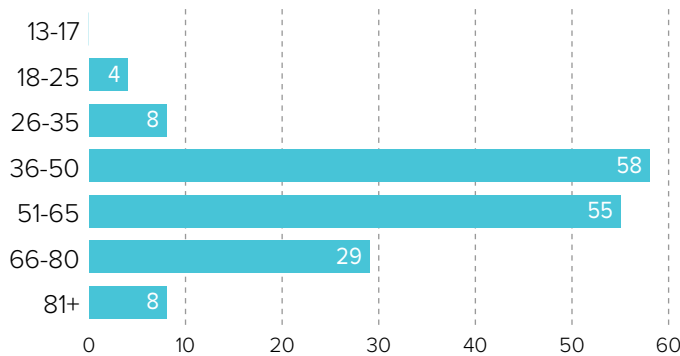
### GENDER



67% WOMEN

33% MEN

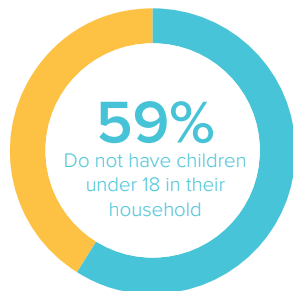
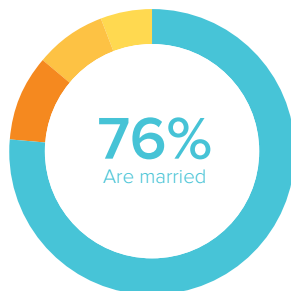
### AGE



### RACIAL OR ETHNIC BACKGROUND

	Count	%
White	158	98.8%
Black	0	0.0%
Hispanic	0	0.0%
Asian	1	.6%
Native American	0	0.0%
Other	1	0.6%
<b>Total</b>	<b>160</b>	<b>100.0%</b>

### MARITAL STATUS AND CHILDREN IN HOUSEHOLD



- KEY**
- Married or remarried
  - Single, never married
  - Widowed
  - Divorced or separated

- KEY**
- Do not have children
  - Have children

### ESTIMATED HOUSEHOLD INCOME

	Count	%
\$19,000 or less	3	2.1%
\$20,000-39,999	15	10.3%
\$40,000-59,999	30	20.7%
\$60,000-79,999	24	16.6%
\$80,000-99,999	19	13.1%
\$100,000 +	54	37.2%
<b>Total</b>	<b>145</b>	<b>100.0%</b>