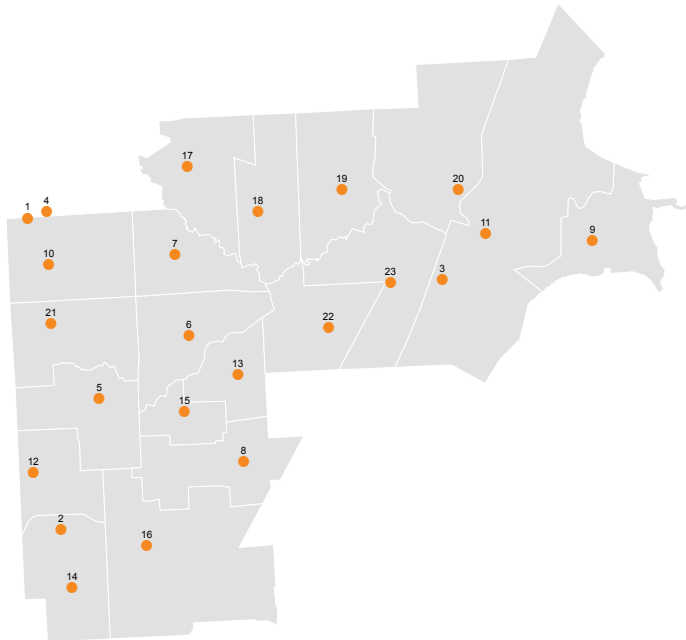


CENTRAL MACOMB

NORTHEAST REGION / VICARIATE REPORT

Parish Profile and Survey Results



VICARIATE MAP

TOTAL SURVEY RESPONSES

Name	#	Name	#
1 St. Anne	63	19 St. Paul of Tarsus	265
2 St. Blase	335	20 St. Peter	296
3 SS. Cyril & Methodius	198	21 St. Rene Goupil	147
4 St. Ephrem	176	22 St. Ronald	190
5 St. Faustina	563	23 St. Thecla	238
6 San Francesco	12		
7 Our Lady of Grace Vietnamese	14		
8 St. Hubert	179		
9 St. Jane Frances de Chantal	211		
10 St. Louis	400		
11 St. Louise	92		
12 St. Malachy	112		
13 St. Mark	70		
14 St. Martin de Porres	135		
15 St. Mary, Our Lady Queen of Families	49		
16 St. Matthias	49		
17 St. Michael	205		
18 Our Lady of Czestochowa	117		

VICARIATE CATHOLIC POPULATION FACTS

	2000	2013	% Change
Total Registered Households	44,773	40,803	-8.9%
Total Registered Individuals	134,319	114,248	-14.9%
Avg % of HH in Parish Boundary	N/A	42%	N/A
Avg % of HH Outside Parish Boundary	N/A	58%	N/A

KEY U.S. CENSUS FACTS

	2000	2010	% Change
Total Households	161,635	158,347	-2.0%
Total Population	404,212	404,161	0.0%
Median Household Income	\$44,421	\$43,301	-2.5%
Median Age	30.0	27.1	-9.7%

VICARIATE FINANCIAL STATS

	2009	2013	% Change
Total Operating Income	\$18,648,603	\$20,763,378	11.3%
Total Operating Expenses	\$16,571,377	\$18,227,803	10.0%
LDP Debt	\$3,195,807	\$2,726,490	-14.7%
AOD & MCC Outstanding payables	N/A	\$1,581,694	N/A
Total Savings	\$8,187,951	\$12,912,338	57.7%

VICARIATE SACRAMENTAL STATS (5 YR. TREND)

	2009	2013	% Change
Baptisms	1,153	841	-27.1%
First Communions	1,161	848	-27.0%
Confirmations	1,065	883	-17.1%
Total Marriages	350	224	-36.0%
Funerals	1,481	1,354	-8.6%

CENTRAL MACOMB

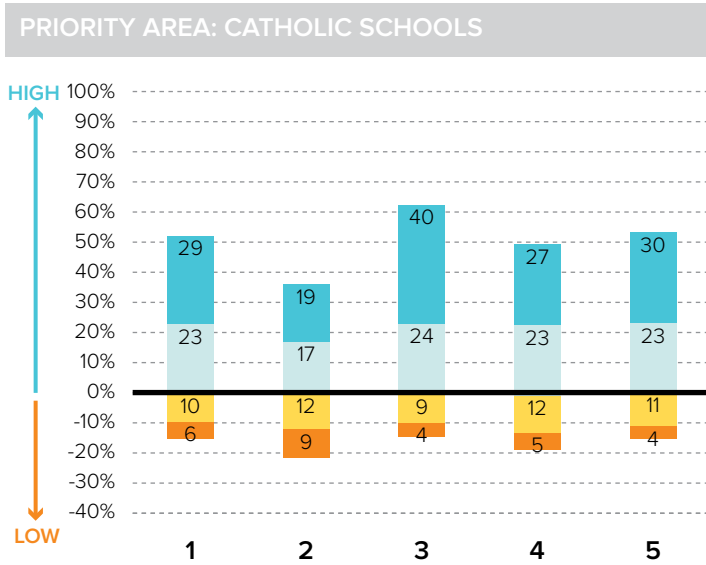
NORTHEAST REGION / VICARIATE REPORT

KEY
 % Excellent
 % Good
 % Fair
 % Poor

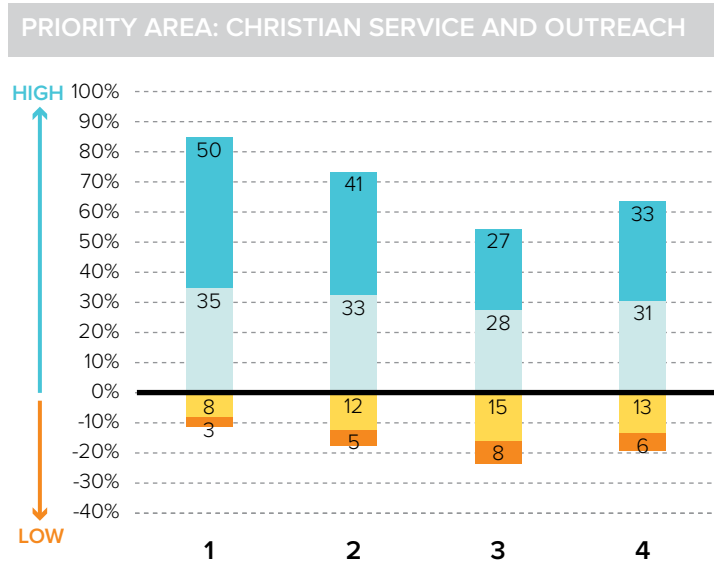
Survey Results Part I: Mission Priorities

The following graphs show how parishioners rated each of the objectives associated with a mission priority area. The graphs are split between positive values for high ratings (“good” or “excellent”) and negative values for lower ratings (“fair” or “poor”). “Don’t know” responses are not shown in the graphs at right to more easily show the split between high and low ratings.

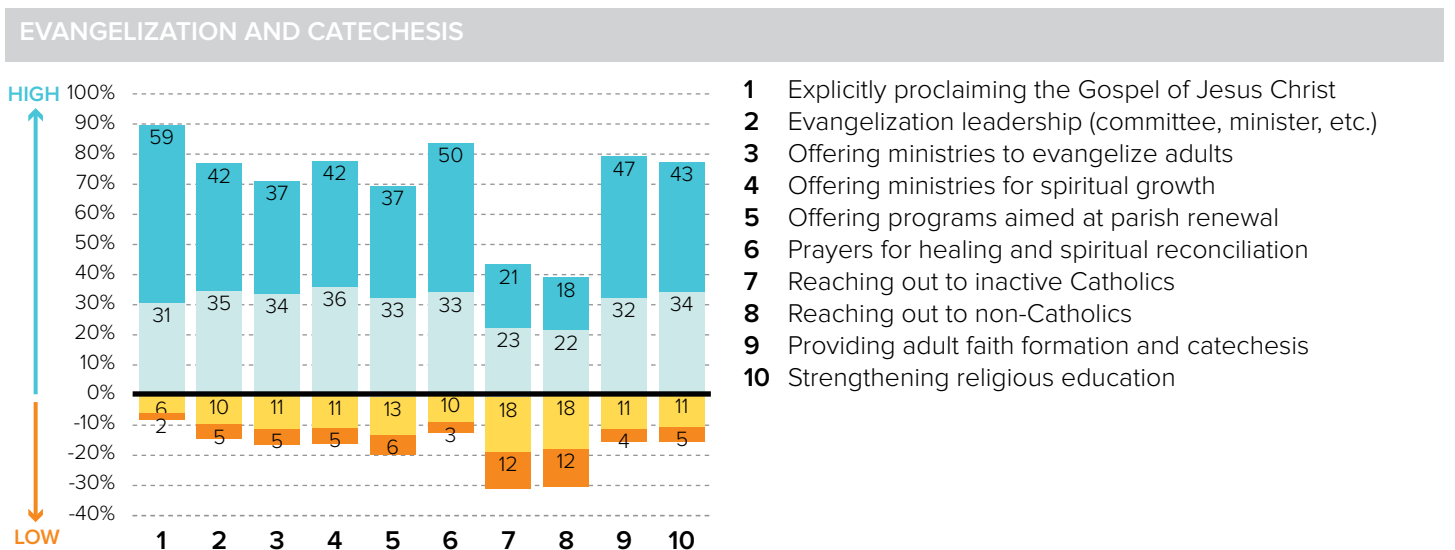
To the best of your ability, please evaluate how well your parish is doing in each of these areas.



- 1 Ensuring a Catholic education is financially viable
- 2 Keeping tuition affordable to all Catholics
- 3 Maintaining a Catholic identity
- 4 Using technology effectively
- 5 Ensuring academic success and Catholic formation



- 1 Christian service projects for the parish community
- 2 Christian service projects for youth and young adults
- 3 Building interfaith relationships
- 4 Collaborating with other community organizations



- 1 Explicitly proclaiming the Gospel of Jesus Christ
- 2 Evangelization leadership (committee, minister, etc.)
- 3 Offering ministries to evangelize adults
- 4 Offering ministries for spiritual growth
- 5 Offering programs aimed at parish renewal
- 6 Prayers for healing and spiritual reconciliation
- 7 Reaching out to inactive Catholics
- 8 Reaching out to non-Catholics
- 9 Providing adult faith formation and catechesis
- 10 Strengthening religious education

CENTRAL MACOMB

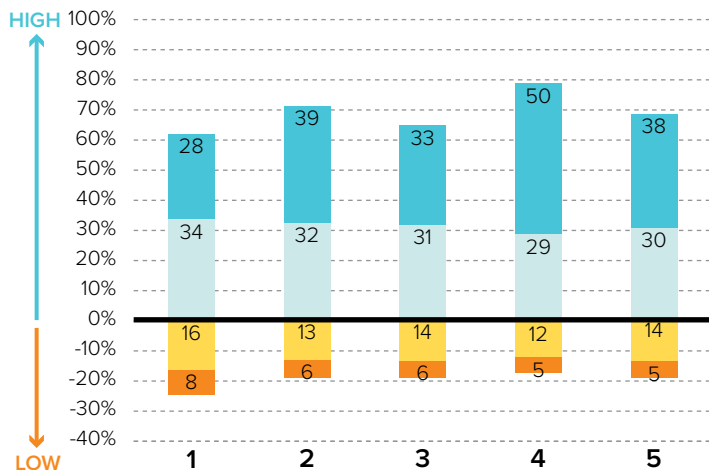
NORTHEAST REGION / VICARIATE REPORT

KEY

- % Excellent
- % Good
- % Fair
- % Poor

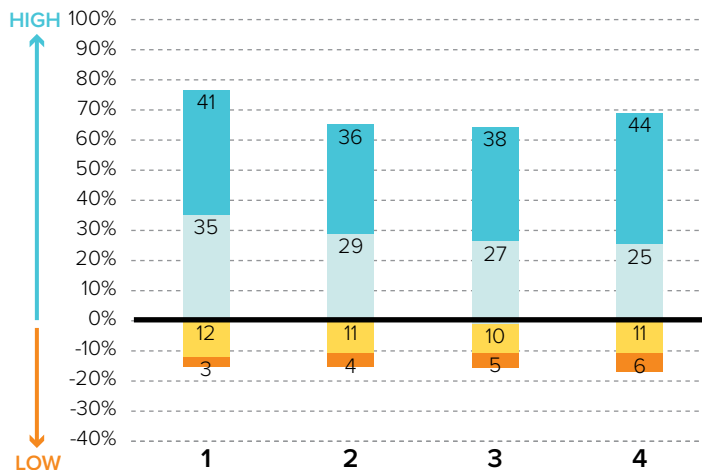
Survey Results Part I: Mission Priorities

PRIORITY AREA: LAY LEADERSHIP



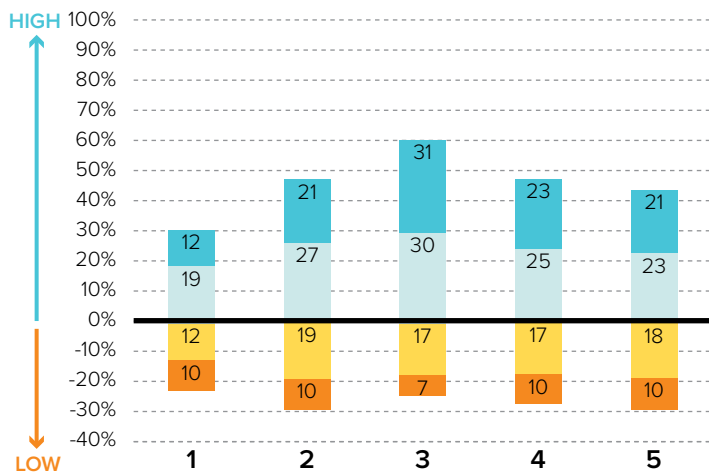
- 1 Training parishioners to identify their spiritual gifts
- 2 Increasing opportunities for lay involvement
- 3 Training and ministry for lay leaders
- 4 Encouraging parishioners to volunteer
- 5 Providing training opportunities for volunteers

PRIORITY AREA: STEWARDSHIP AND ADMINISTRATION



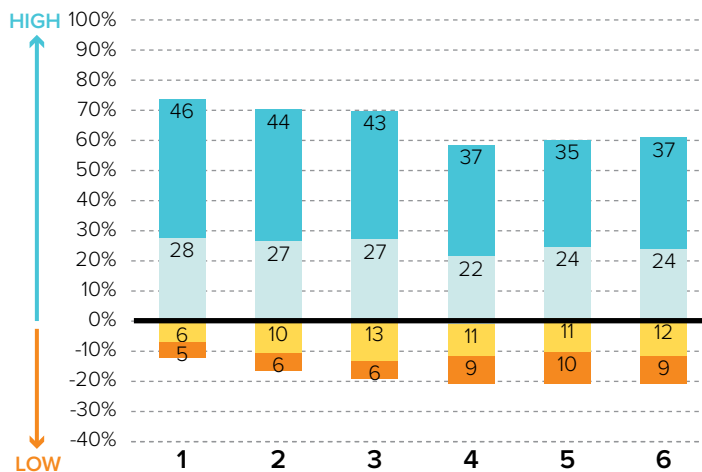
- 1 Communicating stewardship as a way of life
- 2 Forming an active Stewardship Commission
- 3 Supporting an active Finance Council
- 4 Financial transparency/accountability

PRIORITY AREA: VOCATIONS



- 1 Forming a vocations committee
- 2 Promoting vocations to priesthood/religious life
- 3 Promoting prayer for vocations
- 4 Inviting young people to consider Church vocations
- 5 Teaching vocation awareness

PRIORITY AREA: YOUTH AND YOUNG ADULTS



- 1 Providing regular meetings for teens
- 2 Providing special events for teens (e.g. retreats)
- 3 Engaging youth in parish life and liturgies
- 4 Providing regular meetings for young adults
- 5 Hosting special events for young adults
- 6 Engaging young adults in parish ministries and outreaches

CENTRAL MACOMB

NORTHEAST REGION / VICARIATE REPORT

Survey Results Part II: Faith and Parish Life

YEARS AT CURRENT PARISH

How many years have you attended Mass at your current parish?

	Count	%
Less than 1 year	65	3.2%
1-5 years	281	13.9%
6-10 years	363	17.9%
11-20 years	514	25.3%
21-30 years	388	19.1%
31+ years	417	20.6%
Total	2028	100.0%

MASS ATTENDANCE

How often do you attend Mass?



REASONS TO MISS MASS

If you do not attend Mass regularly on Sundays, how much does each of the following explain why? % "somewhat" or "very"

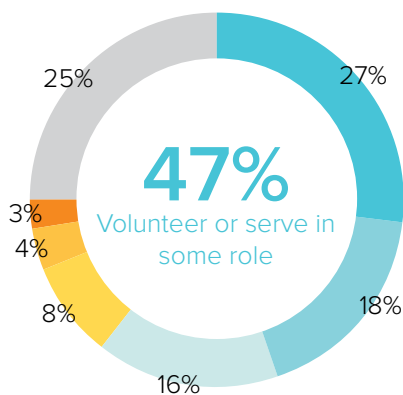
Demands of work, school, or sports	27.4%
Family concerns and needs	22.1%
Health problems or a disability	16.3%
Masses are boring/irrelevant to me	10.0%
The pastor is not welcoming	8.9%
Clusters, mergers, and closures of parishes	8.0%
The parish is not welcoming	7.6%
Lack of children's ministries	6.8%
Divorce or marriage outside of Church	5.3%

REGISTRATION

Are you a registered member at your current parish?



INVOLVEMENT IN THE PARISH



Do you serve, or have you ever served in any of the following roles in your parish?

KEY

- Volunteer (e.g. catechist, Vacation Bible School)
- Liturgical ministries (e.g. usher, Eucharistic Minister, lector)
- Member of a parish council, commission, or committee
- Music ministries (e.g. choir, musician, director)
- Parish support staff (e.g. secretary, maintenance)
- Parish staff (e.g. youth minister, business manager, DRE)
- None of the above

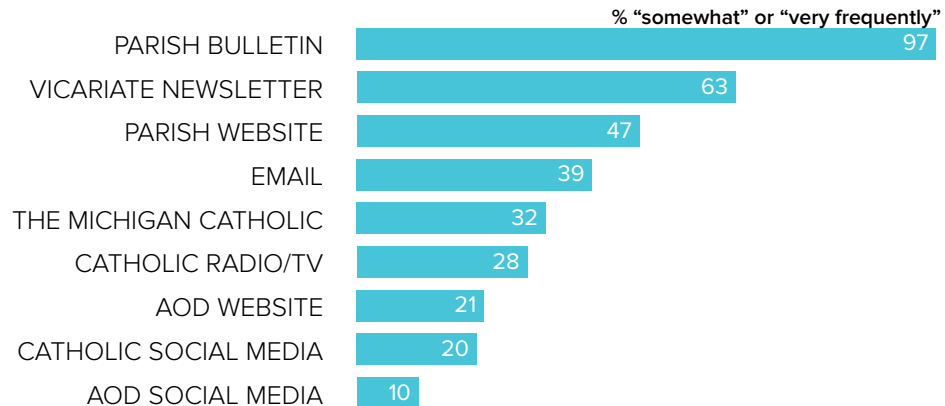
CENTRAL MACOMB

NORTHEAST REGION / VICARIATE REPORT

Survey Results Part II: Faith and Parish Life

COMMUNICATION METHODS

How often do you rely on the following for information about your parish, the Archdiocese, or the Catholic Church?



PARISH CHARACTERISTICS

How important to you are these characteristics in a parish?

	% "very important"		% "very important"
Quality worship service	91.3%	Opportunities for penance/confession	41.4%
Parish embraces Church teachings and values	77.9%	Catholic school	36.0%
Daily and weekend Mass schedules	74.5%	Small group ministries (e.g. Bible Study)	34.5%
Children's ministries (for all age groups)	58.0%	Contemporary music	33.5%
Traditional music	43.9%	Mass in language(s) other than English	9.1%
Parish social groups/gatherings	43.5%		
Devotions (rosary, adoration, etc.)	42.2%		
Service activities	42.2%		

PASTOR CHARACTERISTICS

How important to you are these characteristics in a pastor?

	% "very important"
Welcoming spirit	92.5%
Ability to connect scripture to the present	88.2%
Invites people into a personal relationship w/ Jesus	84.0%
Engaging preaching style	83.4%
Manages parish resources effectively	80.7%
Communicates parish priorities	73.9%
Values input from laity	73.3%
Challenges people to live a life of discipleship	70.4%

CHALLENGES FACING THE CHURCH

How would you rate the following as challenges facing the Catholic Church in Southeast Michigan today?

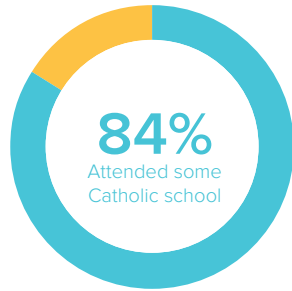
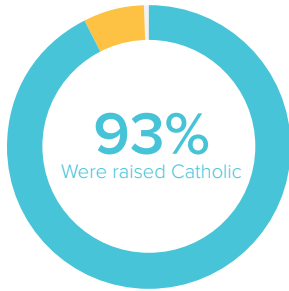
	% "serious challenge"
TOP 5 RESPONSES	
Shortage of priests/decline in vocations	84.9%
Engaging teens and young adults in parish life	64.3%
Society in general is less religious	61.8%
Clustering, merging, and closing of parishes	58.9%
Church funds/financial management	57.1%

CENTRAL MACOMB

NORTHEAST REGION / VICARIATE REPORT

Survey Results Part III: Demographics

CATHOLIC BACKGROUND AND EDUCATION



KEY

- Raised Catholic
- Converted to Catholicism
- Not Catholic

KEY

- Attended Catholic school
- Did not attend Catholic school

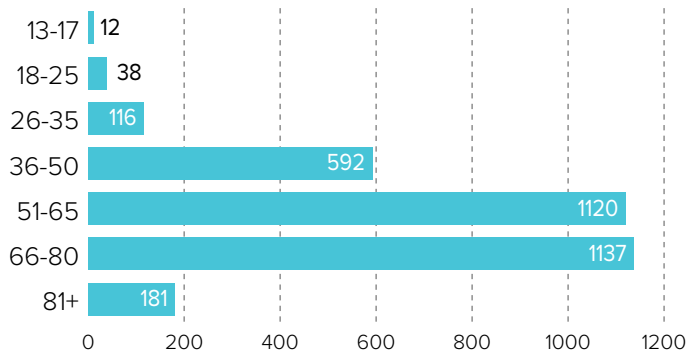
GENDER



65% WOMEN

35% MEN

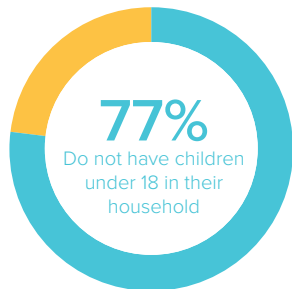
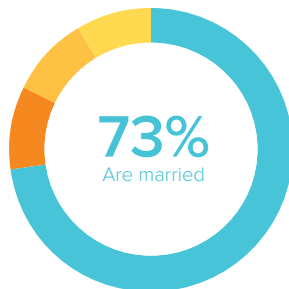
AGE



RACIAL OR ETHNIC BACKGROUND

	Count	%
White	3055	96.7%
Black	10	0.3%
Hispanic	23	0.7%
Asian	50	1.6%
Native American	3	0.1%
Other	18	0.6%
Total	3159	100.0%

MARITAL STATUS AND CHILDREN IN HOUSEHOLD



KEY

- Married or remarried
- Single, never married
- Widowed
- Divorced or separated

KEY

- Do not have children
- Have children

ESTIMATED HOUSEHOLD INCOME

	Count	%
\$19,000 or less	192	7.1%
\$20,000-39,999	563	21.0%
\$40,000-59,999	596	22.2%
\$60,000-79,999	444	16.5%
\$80,000-99,999	346	12.9%
\$100,000 +	546	20.3%
Total	2687	100.0%